

Anti-Osteocalcin antibody ab93876

★★★★★ [7 Abreviews](#) [288 References](#) [2 Images](#)

Overview

Product name	Anti-Osteocalcin antibody
Description	Rabbit polyclonal to Osteocalcin
Host species	Rabbit
Tested applications	Suitable for: WB, IHC-P
Species reactivity	Reacts with: Mouse, Human
Immunogen	Synthetic peptide. This information is proprietary to Abcam and/or its suppliers.
Positive control	IHC-P: Liver carcinoma tissue WB: Lung tissue lysate
General notes	<p>The Life Science industry has been in the grips of a reproducibility crisis for a number of years. Abcam is leading the way in addressing this with our range of recombinant monoclonal antibodies and knockout edited cell lines for gold-standard validation. Please check that this product meets your needs before purchasing.</p> <p>If you have any questions, special requirements or concerns, please send us an inquiry and/or contact our Support team ahead of purchase. Recommended alternatives for this product can be found below, along with publications, customer reviews and Q&As</p>

Properties

Form	Liquid
Storage instructions	Shipped at 4°C. Store at -20°C. Stable for 12 months at -20°C.
Storage buffer	<p>pH: 7.40</p> <p>Preservative: 0.02% Sodium azide</p> <p>Constituents: PBS, 1% BSA</p>
Purity	Protein A purified
Purification notes	Affinity purified
Clonality	Polyclonal
Isotype	IgG

Applications

The Abpromise guarantee Our **Abpromise guarantee** covers the use of ab93876 in the following tested applications.

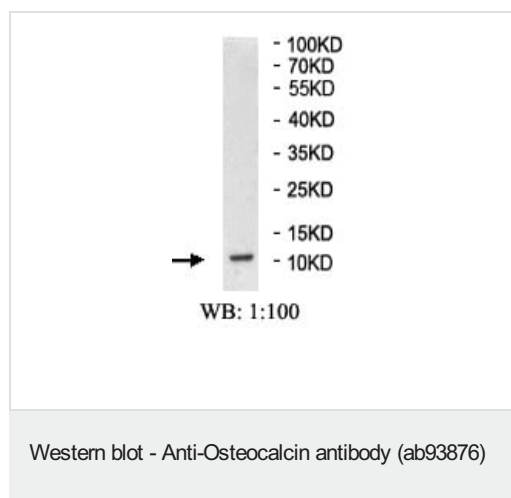
The application notes include recommended starting dilutions; optimal dilutions/concentrations should be determined by the end user.

Application	Abreviews	Notes
WB		Use at an assay dependent concentration. Predicted molecular weight: 11 kDa.
IHC-P	★★★★★ (3)	Use at an assay dependent concentration.

Target

Function	Constitutes 1-2% of the total bone protein. It binds strongly to apatite and calcium.
Sequence similarities	Belongs to the osteocalcin/matrix Gla protein family. Contains 1 Gla (gamma-carboxy-glutamate) domain.
Post-translational modifications	Gamma-carboxyglutamate residues are formed by vitamin K dependent carboxylation. These residues are essential for the binding of calcium.
Cellular localization	Secreted.

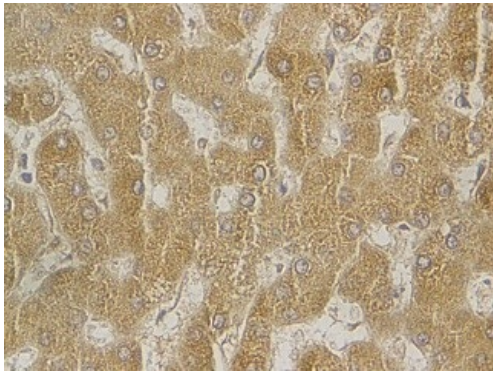
Images



Anti-Osteocalcin antibody (ab93876) at 1/100 dilution + Mouse lung tissue lysate

Predicted band size: 11 kDa

Western blot analysis of mouse lung tissue lysate with anti-osteocalcin antibody.



Immunohistochemistry (Formalin/PFA-fixed paraffin-embedded sections) - Anti-Osteocalcin antibody (ab93876)

Immunohistochemical staining of formalin-fixed paraffin-embedded liver carcinoma staining with anti-osteocalcin antibody at a dilution of 1/100.

Please note: All products are "FOR RESEARCH USE ONLY. NOT FOR USE IN DIAGNOSTIC PROCEDURES"

Our Abpromise to you: Quality guaranteed and expert technical support

- Replacement or refund for products not performing as stated on the datasheet
- Valid for 12 months from date of delivery
- Response to your inquiry within 24 hours
- We provide support in Chinese, English, French, German, Japanese and Spanish
- Extensive multi-media technical resources to help you
- We investigate all quality concerns to ensure our products perform to the highest standards

If the product does not perform as described on this datasheet, we will offer a refund or replacement. For full details of the Abpromise, please visit <https://www.abcam.com/abpromise> or contact our technical team.

Terms and conditions

- Guarantee only valid for products bought direct from Abcam or one of our authorized distributors