


## Product datasheet

### Anti-Otx1 antibody ab25985

★★★★☆ [4 Abreviews](#) [7 References](#) [2 Images](#)

#### Overview

<b>Product name</b>	Anti-Otx1 antibody
<b>Description</b>	Rabbit polyclonal to Otx1
<b>Host species</b>	Rabbit
<b>Specificity</b>	We have not been able to test Rabbit polyclonal to Otx1 (ab25985) in Western Blot due to difficulties in accessing the appropriate lysates. We would appreciate any feedback on this antibody.
<b>Tested applications</b>	<b>Suitable for:</b> IHC-P, WB
<b>Species reactivity</b>	<b>Reacts with:</b> Mouse, Human <b>Predicted to work with:</b> Rat, Chimpanzee, Gorilla, Catfish 
<b>Immunogen</b>	Synthetic peptide conjugated to KLH derived from within residues 100 - 200 of Mouse Otx1. Read Abcam's proprietary immunogen policy
<b>General notes</b>	<p>The Life Science industry has been in the grips of a reproducibility crisis for a number of years. Abcam is leading the way in addressing this with our range of recombinant monoclonal antibodies and knockout edited cell lines for gold-standard validation. Please check that this product meets your needs before purchasing.</p> <p>If you have any questions, special requirements or concerns, please send us an inquiry and/or contact our Support team ahead of purchase. Recommended alternatives for this product can be found below, along with publications, customer reviews and Q&amp;As</p>

#### Properties

<b>Form</b>	Liquid
<b>Storage instructions</b>	Shipped at 4°C. Store at +4°C short term (1-2 weeks). Upon delivery aliquot. Store at -20°C or -80°C. Avoid freeze / thaw cycle.
<b>Storage buffer</b>	<p>pH: 7.40</p> <p>Preservative: 0.02% Sodium azide</p> <p>Constituent: PBS</p> <p>Batches of this product that have a concentration &lt; 1mg/ml may have BSA added as a stabilising agent. If you would like information about the formulation of a specific lot, please contact our scientific support team who will be happy to help.</p>

<b>Purity</b>	Immunogen affinity purified
<b>Clonality</b>	Polyclonal
<b>Isotype</b>	IgG

## Applications

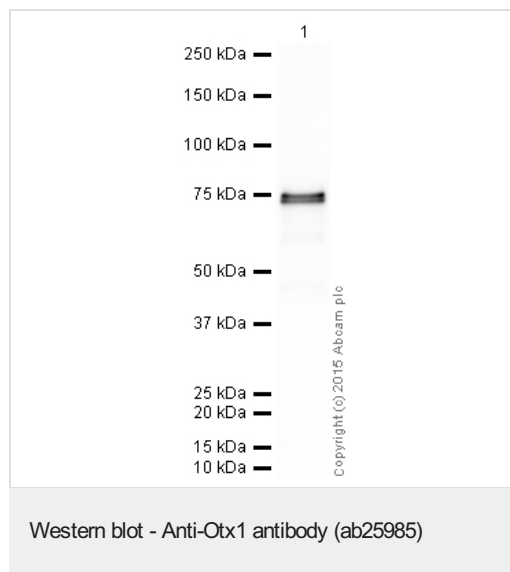
**The Abpromise guarantee** Our **Abpromise guarantee** covers the use of ab25985 in the following tested applications. The application notes include recommended starting dilutions; optimal dilutions/concentrations should be determined by the end user.

Application	Abreviews	Notes
IHC-P	★★★★★ (3)	Use at an assay dependent concentration.
WB		Use at an assay dependent concentration. Detects a band of approximately 75 kDa (predicted molecular weight: 37 kDa). This application has only been tested on recombinant protein.

## Target

<b>Function</b>	Probably plays a role in the development of the brain and the sense organs. Can bind to the BCD target sequence (BTS): 5'-TCTAATCCC-3'.
<b>Tissue specificity</b>	Expressed in brain.
<b>Sequence similarities</b>	Belongs to the paired homeobox family. Bicoid subfamily. Contains 1 homeobox DNA-binding domain.
<b>Developmental stage</b>	Embryo.
<b>Cellular localization</b>	Nucleus.

## Images



Anti-Otx1 antibody (ab25985) at 1 µg/ml + OTX1 (Human) -  
Recombinant Protein at 0.1 µg

### Secondary

Goat Anti-Rabbit IgG H&L (HRP) preadsorbed at 1/50000 dilution

Developed using the ECL technique.

Performed under reducing conditions.

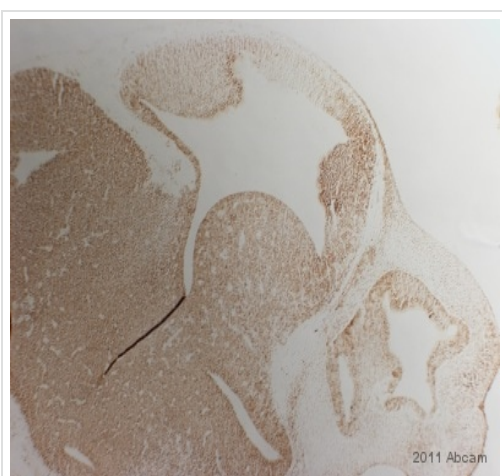
**Predicted band size:** 37 kDa

**Observed band size:** 75 kDa

**Exposure time:** 1 minute

This blot was produced using a 4-12% Bis-tris gel under the MOPS buffer system. The gel was run at 200V for 50 minutes before being transferred onto a Nitrocellulose membrane at 30V for 70 minutes. The membrane was then blocked for an hour using 2% Bovine Serum Albumin before being incubated with ab25985 overnight at 4°C. Antibody binding was detected using an anti-rabbit antibody conjugated to HRP, and visualised using ECL development solution **ab133406**.

Ab25985 recognizes the full length tagged recombinant protein which has an expected molecular weight of 75 kDa.



IHC-P image of Otx1 antibody (ab25985) on E11.5 mouse embryo sections. The sections were fixed in Paraformaldehyde and underwent heat mediated antigen retrieval using EDTA. These sections were then blocked in serum for 1 hour, before the Otx1 antibody was added at 1:100 dilution and left overnight at 4°C.

Immunohistochemistry (Formalin/PFA-fixed paraffin-embedded sections) - Anti-Otx1 antibody (ab25985)

This image is taken from an anonymous abreview

**Please note:** All products are "FOR RESEARCH USE ONLY. NOT FOR USE IN DIAGNOSTIC PROCEDURES"

### **Our Abpromise to you: Quality guaranteed and expert technical support**

---

- Replacement or refund for products not performing as stated on the datasheet
- Valid for 12 months from date of delivery
- Response to your inquiry within 24 hours
- We provide support in Chinese, English, French, German, Japanese and Spanish
- Extensive multi-media technical resources to help you
- We investigate all quality concerns to ensure our products perform to the highest standards

If the product does not perform as described on this datasheet, we will offer a refund or replacement. For full details of the Abpromise, please visit <https://www.abcam.com/abpromise> or contact our technical team.

## Terms and conditions

---

- Guarantee only valid for products bought direct from Abcam or one of our authorized distributors