


## Product datasheet

### Anti-P Glycoprotein antibody ab129450

★★★★★ [3 Abreviews](#) [48 References](#) [2 Images](#)

#### Overview

<b>Product name</b>	Anti-P Glycoprotein antibody
<b>Description</b>	Rabbit polyclonal to P Glycoprotein
<b>Host species</b>	Rabbit
<b>Tested applications</b>	<b>Suitable for:</b> WB, IP
<b>Species reactivity</b>	<b>Reacts with:</b> Human <b>Predicted to work with:</b> Chimpanzee 
<b>Immunogen</b>	Synthetic peptide corresponding to a region within amino acids 1-50 of Human P Glycoprotein (NP_000918.2)
<b>General notes</b>	<p>The Life Science industry has been in the grips of a reproducibility crisis for a number of years. Abcam is leading the way in addressing this with our range of recombinant monoclonal antibodies and knockout edited cell lines for gold-standard validation. Please check that this product meets your needs before purchasing.</p> <p>If you have any questions, special requirements or concerns, please send us an inquiry and/or contact our Support team ahead of purchase. Recommended alternatives for this product can be found below, along with publications, customer reviews and Q&amp;As</p>

#### Properties

<b>Form</b>	Liquid
<b>Storage instructions</b>	Shipped at 4°C. Store at -20°C. Stable for 12 months at -20°C.
<b>Storage buffer</b>	<p>pH: 7</p> <p>Preservative: 0.09% Sodium azide</p> <p>Constituent: 99% Tris citrate/phosphate</p>
<b>Purity</b>	pH: 7-8
<b>Clonality</b>	Immunogen affinity purified
<b>Isotype</b>	Polyclonal
	IgG

#### Applications

## The Abpromise guarantee

Our **Abpromise guarantee** covers the use of ab129450 in the following tested applications.

The application notes include recommended starting dilutions; optimal dilutions/concentrations should be determined by the end user.

Application	Abreviews	Notes
WB		1/1000 - 1/5000. Predicted molecular weight: 141 kDa.
IP		Use at 2-10 µg/mg of lysate.

## Target

### Function

Energy-dependent efflux pump responsible for decreased drug accumulation in multidrug-resistant cells.

### Tissue specificity

Expressed in liver, kidney, small intestine and brain.

### Involvement in disease

Genetic variations in ABCB1 are associated with susceptibility to inflammatory bowel disease type 13 (IBD13) [MIM:612244]. Inflammatory bowel disease is characterized by a chronic relapsing intestinal inflammation. It is subdivided into Crohn disease and ulcerative colitis phenotypes. Crohn disease may involve any part of the gastrointestinal tract, but most frequently the terminal ileum and colon. Bowel inflammation is transmural and discontinuous; it may contain granulomas or be associated with intestinal or perianal fistulas. In contrast, in ulcerative colitis, the inflammation is continuous and limited to rectal and colonic mucosal layers; fistulas and granulomas are not observed. Both diseases include extraintestinal inflammation of the skin, eyes, or joints. Crohn disease and ulcerative colitis are commonly classified as autoimmune diseases.

### Sequence similarities

Belongs to the ABC transporter superfamily. ABCB family. Multidrug resistance exporter (TC 3.A.1.201) subfamily.

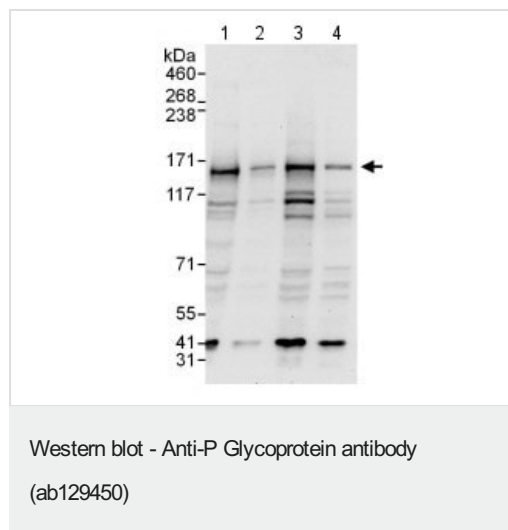
Contains 2 ABC transmembrane type-1 domains.

Contains 2 ABC transporter domains.

### Cellular localization

Membrane.

## Images



**All lanes :** Anti-P Glycoprotein antibody (ab129450) at 0.4 µg/ml

**Lane 1 :** HeLa whole cell lysate at 50 µg

**Lane 2 :** HeLa whole cell lysate at 15 µg

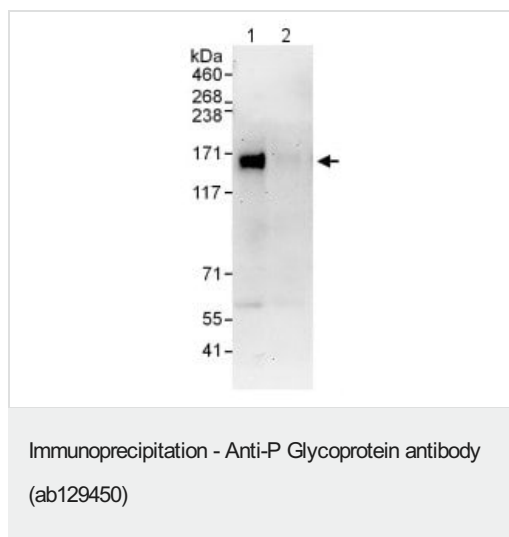
**Lane 3 :** 293T whole cell lysate at 50 µg

**Lane 4 :** Jurkat whole cell lysate at 50 µg

Developed using the ECL technique.

**Predicted band size:** 141 kDa

**Exposure time:** 10 seconds



Detection of P Glycoprotein by Western Blot of Immunoprecipitate.  
 Lane 1: ab129450 at 1µg/ml staining P Glycoprotein in HeLa whole cell lysate immunoprecipitated using ab129450 at 6µg/mg lysate (1 mg/IP; 20% of IP loaded/lane).  
 Lane 2: Control IgG  
 Detection: Chemiluminescence with exposure time of 30 seconds.

**Please note:** All products are "FOR RESEARCH USE ONLY. NOT FOR USE IN DIAGNOSTIC PROCEDURES"

### Our Abpromise to you: Quality guaranteed and expert technical support

- Replacement or refund for products not performing as stated on the datasheet
- Valid for 12 months from date of delivery
- Response to your inquiry within 24 hours
- We provide support in Chinese, English, French, German, Japanese and Spanish
- Extensive multi-media technical resources to help you
- We investigate all quality concerns to ensure our products perform to the highest standards

If the product does not perform as described on this datasheet, we will offer a refund or replacement. For full details of the Abpromise, please visit <https://www.abcam.com/abpromise> or contact our technical team.

### Terms and conditions

- Guarantee only valid for products bought direct from Abcam or one of our authorized distributors