



## Product datasheet

### Anti-P2Y12 antibody ab183066

★★★★★ [2 Abreviews](#) [3 References](#) [2 Images](#)

#### Overview

<b>Product name</b>	Anti-P2Y12 antibody
<b>Description</b>	Rabbit polyclonal to P2Y12
<b>Host species</b>	Rabbit
<b>Tested applications</b>	<b>Suitable for:</b> WB, IHC-P
<b>Species reactivity</b>	<b>Reacts with:</b> Human
<b>Immunogen</b>	Synthetic peptide within Human P2Y12 aa 1-100 (N terminal). The exact immunogen sequence used to generate this antibody is proprietary information. If additional detail on the immunogen is needed to determine the suitability of the antibody for your needs, please <b><a href="#">contact</a></b> our Scientific Support team to discuss your requirements. Genbank: NP_073625 Database link: <a href="#">Q9H244</a>
	 <a href="#">Run BLAST with</a>  <a href="#">Run BLAST with</a>
<b>Positive control</b>	Human 293T and HeLa whole cell lysate ( <a href="#">ab150035</a> ); Human lung cancer tissue.
<b>General notes</b>	<p>The Life Science industry has been in the grips of a reproducibility crisis for a number of years. Abcam is leading the way in addressing this with our range of recombinant monoclonal antibodies and knockout edited cell lines for gold-standard validation. Please check that this product meets your needs before purchasing.</p> <p>If you have any questions, special requirements or concerns, please send us an inquiry and/or contact our Support team ahead of purchase. Recommended alternatives for this product can be found below, along with publications, customer reviews and Q&amp;As</p>

#### Properties

<b>Form</b>	Liquid
<b>Storage instructions</b>	Shipped at 4°C. Store at +4°C short term (1-2 weeks). Upon delivery aliquot. Store at -20°C long term. Avoid freeze / thaw cycle.
<b>Storage buffer</b>	pH: 7.4 Preservative: 0.05% Sodium azide Constituents: 50% Glycerol (glycerin, glycerine), 49% PBS  PBS without Mg <sup>2+</sup> and Ca <sup>2+</sup>
<b>Purity</b>	Immunogen affinity purified

<b>Clonality</b>	Polyclonal
<b>Isotype</b>	IgG

## Applications

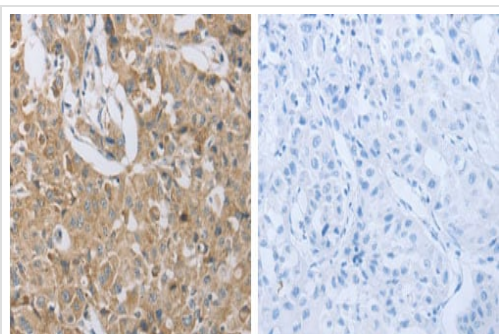
**The Abpromise guarantee** Our **Abpromise guarantee** covers the use of ab183066 in the following tested applications. The application notes include recommended starting dilutions; optimal dilutions/concentrations should be determined by the end user.

Application	Abreviews	Notes
WB		1/400 - 1/2000. Predicted molecular weight: 39 kDa.
IHC-P		1/25 - 1/100.

## Target

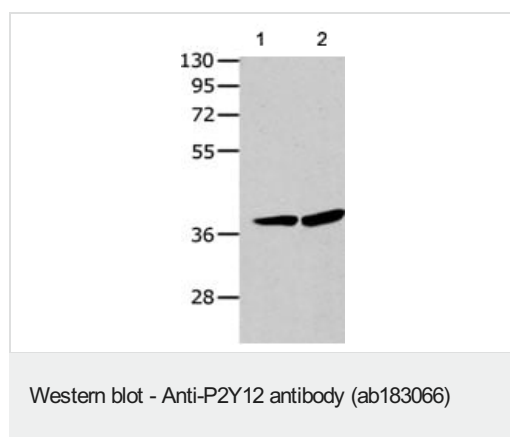
<b>Function</b>	Receptor for ADP and ATP coupled to G-proteins that inhibit the adenylyl cyclase second messenger system. Not activated by UDP and UTP. Involved in platelets aggregation.
<b>Tissue specificity</b>	Highly expressed in the platelets, lower levels in the brain. Lowest levels in the lung, appendix, pituitary and adrenal gland. Expressed in the spinal cord and in the fetal brain.
<b>Involvement in disease</b>	Defects in P2RY12 are the cause of P2RY12 deficiency (P2RY12D) [MIM:609821]. It is a condition characterized by severe impairment of platelet response to ADP and abnormal bleeding marked by excessive posttraumatic and postsurgical blood loss.
<b>Sequence similarities</b>	Belongs to the G-protein coupled receptor 1 family.
<b>Cellular localization</b>	Cell membrane.

## Images



Immunohistochemical analysis of paraffin-embedded Human lung cancer tissue labeling P2Y12 with ab183066 at 1/25 dilution, in the presence (right image) or absence (left image) of immunizing peptide.

Immunohistochemistry (Formalin/PFA-fixed paraffin-embedded sections) - Anti-P2Y12 antibody (ab183066)



**All lanes :** Anti-P2Y12 antibody (ab183066) at 1/400 dilution

**Lane 1 :** 293T cell lysate

**Lane 2 :** HeLa cell lysate

Lysates/proteins at 40 µg per lane.

#### **Secondary**

**All lanes :** Goat anti Rabbit IgG - H&L (HRP) at 1/5000 dilution

Developed using the ECL technique.

**Predicted band size:** 39 kDa

**Exposure time:** 30 seconds

**Please note:** All products are "FOR RESEARCH USE ONLY. NOT FOR USE IN DIAGNOSTIC PROCEDURES"

#### **Our Abpromise to you: Quality guaranteed and expert technical support**

---

- Replacement or refund for products not performing as stated on the datasheet
- Valid for 12 months from date of delivery
- Response to your inquiry within 24 hours
- We provide support in Chinese, English, French, German, Japanese and Spanish
- Extensive multi-media technical resources to help you
- We investigate all quality concerns to ensure our products perform to the highest standards

If the product does not perform as described on this datasheet, we will offer a refund or replacement. For full details of the Abpromise, please visit <https://www.abcam.com/abpromise> or contact our technical team.

#### **Terms and conditions**

---

- Guarantee only valid for products bought direct from Abcam or one of our authorized distributors