


Anti-P2Y4 antibody ab180718

[2 References](#) [2 Images](#)

Overview

Product name	Anti-P2Y4 antibody
Description	Rabbit polyclonal to P2Y4
Host species	Rabbit
Tested applications	Suitable for: IHC-P, WB
Species reactivity	Reacts with: Human Predicted to work with: Mouse, Rat 
Immunogen	Synthetic peptide corresponding to Human P2Y4. Database link: P51582
Positive control	K562 cell lysate extracts and Human lung cancer tissue.
General notes	<p>The Life Science industry has been in the grips of a reproducibility crisis for a number of years. Abcam is leading the way in addressing this with our range of recombinant monoclonal antibodies and knockout edited cell lines for gold-standard validation. Please check that this product meets your needs before purchasing.</p> <p>If you have any questions, special requirements or concerns, please send us an inquiry and/or contact our Support team ahead of purchase. Recommended alternatives for this product can be found below, along with publications, customer reviews and Q&As</p>

Properties

Form	Liquid
Storage instructions	Shipped at 4°C. Store at +4°C short term (1-2 weeks). Upon delivery aliquot. Store at -20°C long term. Avoid freeze / thaw cycle.
Storage buffer	pH: 7.30 Preservative: 0.02% Sodium azide Constituents: 50% Glycerol, 49% PBS
Purity	Immunogen affinity purified
Clonality	Polyclonal
Isotype	IgG

Applications

The Abpromise guarantee

Our **Abpromise guarantee** covers the use of ab180718 in the following tested applications.

The application notes include recommended starting dilutions; optimal dilutions/concentrations should be determined by the end user.

Application	Abreviews	Notes
IHC-P		1/50 - 1/100.
WB		1/500 - 1/2000. Predicted molecular weight: 41 kDa.

Target

Function

Receptor for UTP and UDP coupled to G-proteins that activate a phosphatidylinositol-calcium second messenger system. Not activated by ATP or ADP.

Tissue specificity

Pancreas.

Sequence similarities

Belongs to the G-protein coupled receptor 1 family.

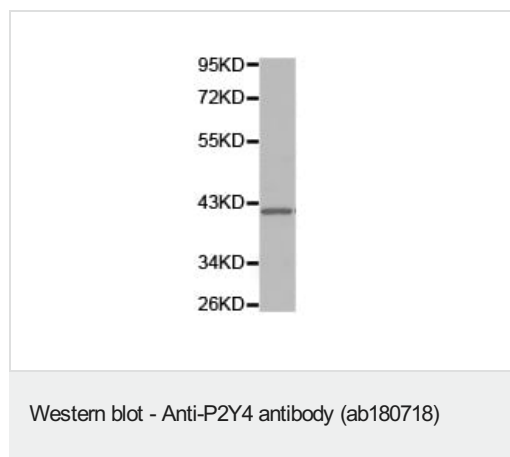
Post-translational modifications

Phosphorylation of Ser-333 and Ser-334 is a key step in agonist-dependent desensitization and loss of surface P2RY4. This phosphorylation does not involve PKC, nor other calcium activated kinases.

Cellular localization

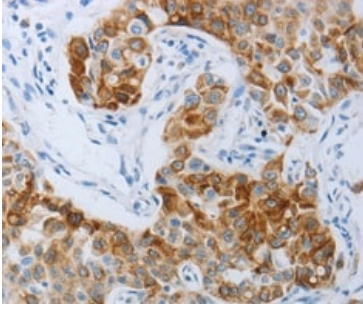
Cell membrane.

Images



Anti-P2Y4 antibody (ab180718) at 1/500 dilution + K562 cell extracts

Predicted band size: 41 kDa



Immunohistochemical analysis of paraffin-embedded Human lung cancer tissue labeling P2Y4 using ab180718 at a 1/50 dilution.

Immunohistochemistry (Formalin/PFA-fixed paraffin-embedded sections) - Anti-P2Y4 antibody (ab180718)

Please note: All products are "FOR RESEARCH USE ONLY. NOT FOR USE IN DIAGNOSTIC PROCEDURES"

Our Abpromise to you: Quality guaranteed and expert technical support

- Replacement or refund for products not performing as stated on the datasheet
- Valid for 12 months from date of delivery
- Response to your inquiry within 24 hours
- We provide support in Chinese, English, French, German, Japanese and Spanish
- Extensive multi-media technical resources to help you
- We investigate all quality concerns to ensure our products perform to the highest standards

If the product does not perform as described on this datasheet, we will offer a refund or replacement. For full details of the Abpromise, please visit <https://www.abcam.com/abpromise> or contact our technical team.

Terms and conditions

- Guarantee only valid for products bought direct from Abcam or one of our authorized distributors