

Anti-p60 katanin antibody ab67206

[1 References](#) [2 Images](#)

Overview

Product name	Anti-p60 katanin antibody
Description	Mouse polyclonal to p60 katanin
Host species	Mouse
Tested applications	Suitable for: WB
Species reactivity	Reacts with: Mouse, Human
Immunogen	Recombinant full length protein within Human p60 katanin. The exact immunogen sequence used to generate this antibody is proprietary information. If additional detail on the immunogen is needed to determine the suitability of the antibody for your needs, please contact our Scientific Support team to discuss your requirements.
Positive control	p60 katanin transfected 293T cell lysate
General notes	<p>The Life Science industry has been in the grips of a reproducibility crisis for a number of years. Abcam is leading the way in addressing this with our range of recombinant monoclonal antibodies and knockout edited cell lines for gold-standard validation. Please check that this product meets your needs before purchasing.</p> <p>If you have any questions, special requirements or concerns, please send us an inquiry and/or contact our Support team ahead of purchase. Recommended alternatives for this product can be found below, along with publications, customer reviews and Q&As</p>

Properties

Form	Liquid
Storage instructions	Shipped at 4°C. Upon delivery aliquot and store at -20°C or -80°C. Avoid repeated freeze / thaw cycles.
Storage buffer	pH: 7.40 Constituent: 100% PBS
Purity	Protein A purified
Clonality	Polyclonal
Isotype	IgG

Applications

The Abpromise guarantee

Our **Abpromise guarantee** covers the use of ab67206 in the following tested applications.

The application notes include recommended starting dilutions; optimal dilutions/concentrations should be determined by the end user.

Application	Abreviews	Notes
WB		Use at an assay dependent dilution. Detects a band of approximately 34 kDa (predicted molecular weight: 56 kDa).

Target

Function

Severs microtubules in vitro in an ATP-dependent manner. This activity may promote rapid reorganization of cellular microtubule arrays, such as during disassembly of interphase microtubules at the G2-M transition. May also be required for microtubule release from the centrosome after nucleation. In mitotic spindles this could allow depolymerization of the microtubule end proximal to the centrosome, and subsequent poleward microtubule flux. In neurons, microtubule release within the cell body may allow their subsequent transport into neuronal processes by microtubule dependent motor proteins. This transport is required for axonal growth.

Sequence similarities

Belongs to the AAA ATPase family.

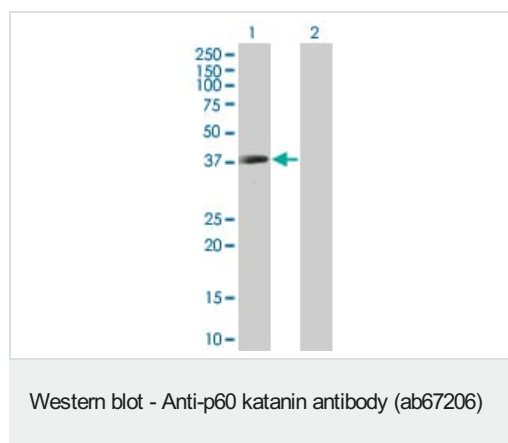
Domain

The N-terminus is sufficient for interaction with microtubules, although high affinity binding requires an intact C-terminal domain and ATP, which promotes oligomerization.

Cellular localization

Cytoplasm. Cytoplasm > cytoskeleton > centrosome. Cytoplasm > cytoskeleton > spindle pole. Predominantly cytoplasmic. Also localized to the interphase centrosome. Enhanced recruitment to the mitotic spindle poles requires microtubules and interaction with KATNB1.

Images



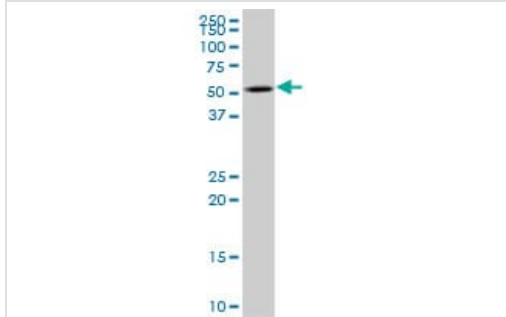
All lanes : Anti-p60 katanin antibody (ab67206)

Lane 1 : p60 katanin transfected 293T cell lysate

Lane 2 : Non transfected 293T cell lysate

Predicted band size: 56 kDa

Observed band size: 34 kDa



p60 katanin expression in NIH/3T3.

Western blot - Anti-p60 katanin antibody (ab67206)

Please note: All products are "FOR RESEARCH USE ONLY. NOT FOR USE IN DIAGNOSTIC PROCEDURES"

Our Abpromise to you: Quality guaranteed and expert technical support

- Replacement or refund for products not performing as stated on the datasheet
- Valid for 12 months from date of delivery
- Response to your inquiry within 24 hours
- We provide support in Chinese, English, French, German, Japanese and Spanish
- Extensive multi-media technical resources to help you
- We investigate all quality concerns to ensure our products perform to the highest standards

If the product does not perform as described on this datasheet, we will offer a refund or replacement. For full details of the Abpromise, please visit <https://www.abcam.com/abpromise> or contact our technical team.

Terms and conditions

- Guarantee only valid for products bought direct from Abcam or one of our authorized distributors