


Product datasheet

Anti-PACE4 antibody ab110144

★★★★★ [1 Abreviews](#) [2 Images](#)

Overview

Product name	Anti-PACE4 antibody
Description	Goat polyclonal to PACE4
Host species	Goat
Tested applications	Suitable for: IHC-P
Species reactivity	Reacts with: Human Predicted to work with: Mouse, Rat 
Immunogen	Synthetic peptide corresponding to Human PACE4 aa 800-900 (internal sequence). (NP_002561.1; NP_612192.1; NP_612195.1; NP_612197.1; NP_612196.1; NP_612198.2; NP_612193.1; NP_612194.1) Database link: P29122-1

 [Run BLAST with](#)

 [Run BLAST with](#)

General notes

The Life Science industry has been in the grips of a reproducibility crisis for a number of years. Abcam is leading the way in addressing this with our range of recombinant monoclonal antibodies and knockout edited cell lines for gold-standard validation. Please check that this product meets your needs before purchasing.

If you have any questions, special requirements or concerns, please send us an inquiry and/or contact our Support team ahead of purchase. Recommended alternatives for this product can be found below, along with publications, customer reviews and Q&As

Properties

Form	Liquid
Storage instructions	Shipped at 4°C. Upon delivery aliquot and store at -20°C. Avoid repeated freeze / thaw cycles.
Storage buffer	pH: 7.30 Preservative: 0.02% Sodium azide Constituents: Tris buffered saline, 0.5% BSA
Purity	Immunogen affinity purified
Clonality	Polyclonal
Isotype	IgG

Applications

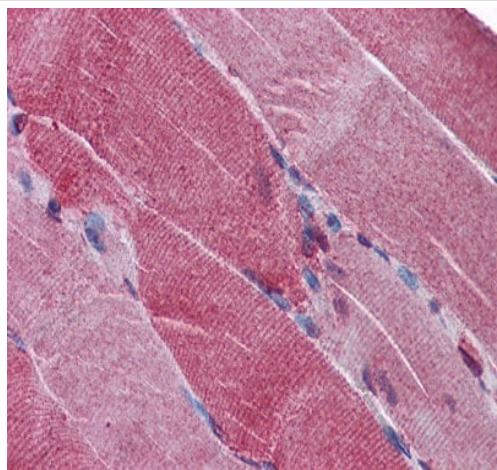
The Abpromise guarantee Our **Abpromise guarantee** covers the use of ab110144 in the following tested applications. The application notes include recommended starting dilutions; optimal dilutions/concentrations should be determined by the end user.

Application	Abreviews	Notes
IHC-P		Use a concentration of 3.75 µg/ml.

Target

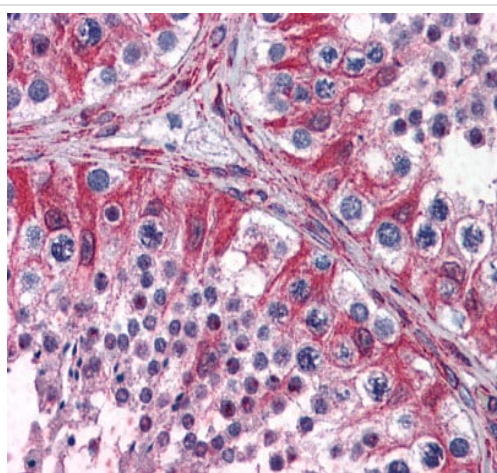
Function	Likely to represent an endoprotease activity within the constitutive secretory pathway, with unique restricted distribution in both neuroendocrine and non-neuroendocrine tissues and capable of cleavage at the RX(K/R)R consensus motif.
Tissue specificity	Each PACE4 isoform exhibits a unique restricted distribution. Isoform PACE4A-I is expressed in heart, brain, placenta, lung, skeletal muscle, kidney, pancreas, but at comparatively higher levels in the liver. Isoform PACE4A-II is at least expressed in placenta. Isoform PACE4B was only found in the embryonic kidney cell line from which it was isolated. Isoform PACE4C and isoform PACE4D are expressed in placenta. Isoform PACE4E-I is expressed in cerebellum, placenta and pituitary. Isoform PACE4E-II is at least present in cerebellum.
Sequence similarities	Belongs to the peptidase S8 family. Contains 1 homo B/P domain. Contains 1 PLAC domain.
Domain	The propeptide domain acts as an intramolecular chaperone assisting the folding of the zymogen within the endoplasmic reticulum. Isoform PACE4D lacks the propeptide domain.
Cellular localization	Secreted; Endomembrane system. Retained intracellularly probably through a hydrophobic cluster in their C-terminus and Endoplasmic reticulum. Not secreted, remains probably in zymogen form in endoplasmic reticulum.

Images



ab110144, at 3.75 µg/ml, staining PACE4 in formalin fixed, paraffin embedded Human skeletal muscle by Immunohistochemistry.

Immunohistochemistry (Formalin/PFA-fixed paraffin-embedded sections) - Anti-PACE4 antibody (ab110144)



ab110144, at 3.75 µg/ml, staining PACE4 in formalin fixed, paraffin embedded Human testis by Immunohistochemistry.

Immunohistochemistry (Formalin/PFA-fixed paraffin-embedded sections) - Anti-PACE4 antibody (ab110144)

Please note: All products are "FOR RESEARCH USE ONLY. NOT FOR USE IN DIAGNOSTIC PROCEDURES"

Our Abpromise to you: Quality guaranteed and expert technical support

- Replacement or refund for products not performing as stated on the datasheet
- Valid for 12 months from date of delivery
- Response to your inquiry within 24 hours
- We provide support in Chinese, English, French, German, Japanese and Spanish
- Extensive multi-media technical resources to help you
- We investigate all quality concerns to ensure our products perform to the highest standards

If the product does not perform as described on this datasheet, we will offer a refund or replacement. For full details of the Abpromise,

please visit <https://www.abcam.com/abpromise> or contact our technical team.

Terms and conditions

- Guarantee only valid for products bought direct from Abcam or one of our authorized distributors