

## Product datasheet

### Anti-PAEP/Glycodelin antibody [13] ab17247

[6 References](#) [1 Image](#)

#### Overview

|                            |   |
|----------------------------|---|
| <b>Product name</b>        | Anti-PAEP/Glycodelin antibody [13]  |
| <b>Description</b>         | Mouse monoclonal [13] to PAEP/Glycodelin  |
| <b>Host species</b>        | Mouse   |
| <b>Tested applications</b> | <b>Suitable for:</b> IHC-P  |
| <b>Species reactivity</b>  | <b>Reacts with:</b> Human   |
| <b>Immunogen</b>           | Full length native protein (purified) corresponding to Human PAEP/Glycodelin.<br>Database link: <a href="#">P09466</a>  |
| <b>General notes</b>       | <p>The Life Science industry has been in the grips of a reproducibility crisis for a number of years. Abcam is leading the way in addressing this with our range of recombinant monoclonal antibodies and knockout edited cell lines for gold-standard validation. Please check that this product meets your needs before purchasing.</p> <p>If you have any questions, special requirements or concerns, please send us an inquiry and/or contact our Support team ahead of purchase. Recommended alternatives for this product can be found below, along with publications, customer reviews and Q&amp;As</p> |

#### Properties

|                             |   |
|-----------------------------|---|
| <b>Form</b>                 | Liquid  |
| <b>Storage instructions</b> | Shipped at 4°C. Store at +4°C short term (1-2 weeks). Store at -20°C or -80°C. Avoid freeze / thaw cycle. |
| <b>Storage buffer</b>       | pH: 7.40<br>Preservative: 0.097% Sodium azide<br>Constituents: 0.0268% PBS, 2.9% Sodium chloride          |
| <b>Purity</b>               | Protein G purified  |
| <b>Clonality</b>            | Monoclonal  |
| <b>Clone number</b>         | 13  |
| <b>Isotype</b>              | IgG1  |
| <b>Light chain type</b>     | kappa   |

#### Applications

## The Abpromise guarantee

Our **Abpromise guarantee** covers the use of ab17247 in the following tested applications.

The application notes include recommended starting dilutions; optimal dilutions/concentrations should be determined by the end user.

| Application | Abreviews | Notes                                    |
|-------------|-----------|--|
| IHC-P       |           | Use at an assay dependent concentration. |

## Target

### Function

This protein is, quantitatively, the main protein synthesized and secreted in the endometrium from mid-luteal phase of the menstrual cycle and during the first semester of pregnancy.

### Sequence similarities

Belongs to the calycin superfamily. Lipocalin family.

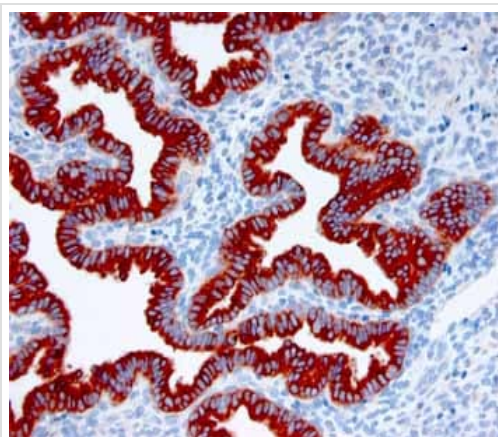
### Post-translational modifications

At least two differentially glycosylated forms are found. Glycodelin-A (GdA) (amniotic fluid) with contraceptive and immunosuppressive activities and glycodelin-S (Gds) (seminal plasma) whose role is not yet known. The gender-specific glycosylation may serve to regulate key process involved in human reproduction.

### Cellular localization

Secreted.

## Images



ab17247 staining endometrial tissue from the late secretory phase. Staining is restricted to the glandular cells.

Immunohistochemistry (Formalin/PFA-fixed paraffin-embedded sections) - Anti-PAEP/Glycodelin antibody [13] (ab17247)

**Please note:** All products are "FOR RESEARCH USE ONLY. NOT FOR USE IN DIAGNOSTIC PROCEDURES"

## Our Abpromise to you: Quality guaranteed and expert technical support

- Replacement or refund for products not performing as stated on the datasheet
- Valid for 12 months from date of delivery
- Response to your inquiry within 24 hours

- We provide support in Chinese, English, French, German, Japanese and Spanish
- Extensive multi-media technical resources to help you
- We investigate all quality concerns to ensure our products perform to the highest standards

If the product does not perform as described on this datasheet, we will offer a refund or replacement. For full details of the Abpromise, please visit <https://www.abcam.com/abpromise> or contact our technical team.

#### **Terms and conditions**

---

- Guarantee only valid for products bought direct from Abcam or one of our authorized distributors