

Product datasheet

Anti-PAEP/Glycodelin antibody [EP870Y] α b53289

Recombinant RabMAb

★★★★★ [2 Abreviews](#) [4 References](#) [3 Images](#)

Overview

Product name	Anti-PAEP/Glycodelin antibody [EP870Y]
Description	Rabbit monoclonal [EP870Y] to PAEP/Glycodelin
Host species	Rabbit
Tested applications	Suitable for: WB Unsuitable for: IHC-P
Species reactivity	Reacts with: Human
Immunogen	Synthetic peptide within Human PAEP/Glycodelin aa 150-250 (C terminal). The exact sequence is proprietary. Database link: P09466
Positive control	WB: TPA-treated K562 cell lysate. Human placenta, kidney, and brain tissue lysates.
General notes	This product is a recombinant monoclonal antibody, which offers several advantages including: <ul style="list-style-type: none"> - High batch-to-batch consistency and reproducibility - Improved sensitivity and specificity - Long-term security of supply - Animal-free production For more information see here . Our RabMAb [®] technology is a patented hybridoma-based technology for making rabbit monoclonal antibodies. For details on our patents, please refer to RabMAb[®] patents . Mouse, Rat: We have preliminary internal testing data to indicate this antibody may not react with these species. Please contact us for more information.

Properties

Form	Liquid
Storage instructions	Shipped at 4°C. Store at +4°C short term (1-2 weeks). Upon delivery aliquot. Store at -20°C long term. Avoid freeze / thaw cycle.
Storage buffer	pH: 7.20 Preservative: 0.01% Sodium azide Constituents: 59% PBS, 40% Glycerol (glycerin, glycerine), 0.05% BSA
Purity	Protein A purified

Clonality	Monoclonal
Clone number	EP870Y
Isotype	IgG

Applications

The Abpromise guarantee Our **Abpromise guarantee** covers the use of ab53289 in the following tested applications. The application notes include recommended starting dilutions; optimal dilutions/concentrations should be determined by the end user.

Application	Abreviews	Notes
WB		1/1000 - 1/10000. Detects a band of approximately 21 kDa (predicted molecular weight: 21 kDa).

Application notes Is unsuitable for IHC-P.

Target

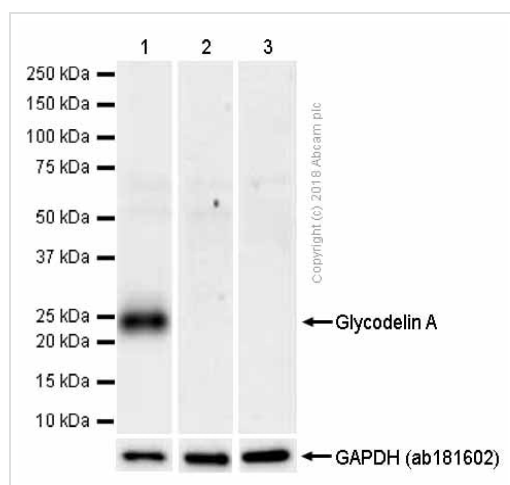
Function This protein is, quantitatively, the main protein synthesized and secreted in the endometrium from mid-luteal phase of the menstrual cycle and during the first semester of pregnancy.

Sequence similarities Belongs to the calycin superfamily. Lipocalin family.

Post-translational modifications At least two differentially glycosylated forms are found. Glycodelin-A (GdA) (amniotic fluid) with contraceptive and immunosuppressive activities and glycodelin-S (Gds) (seminal plasma) whose role is not yet known. The gender-specific glycosylation may serve to regulate key process involved in human reproduction.

Cellular localization Secreted.

Images



Western blot - Anti-PAEP/Glycodelin antibody [EP870Y] (ab53289)

All lanes : Anti-PAEP/Glycodelin antibody [EP870Y] (ab53289) at 0.3 µg/ml (purified)

Lane 1 : Human placenta tissue lysate

Lane 2 : Human kidney tissue lysate

Lane 3 : Human brain tissue lysate

Lysates/proteins at 20 µg per lane.

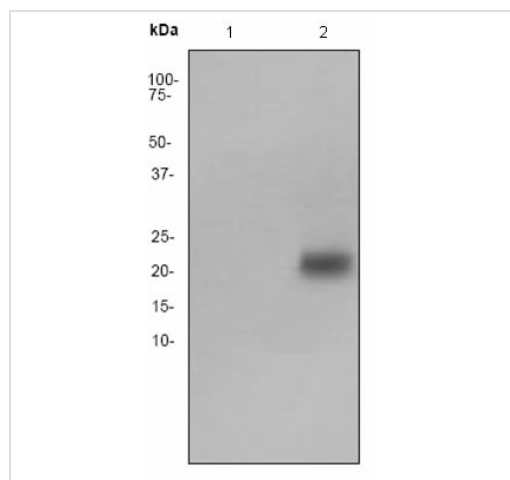
Secondary

All lanes : Goat Anti-Rabbit IgG H&L (HRP) (**ab97051**) at 1/20000 dilution

Predicted band size: 21 kDa

Observed band size: 24 kDa

Blocking and diluting buffer: 5% NFDM/TBST.



Western blot - Anti-PAEP/Glycodelin antibody
[EP870Y] (ab53289)

All lanes : Anti-PAEP/Glycodelin antibody [EP870Y] (ab53289) at
1/500 dilution

Lane 1 : K562 (Human chronic myelogenous leukemia cell line
from bone marrow) cell lysate

Lane 2 : TPA-treated K562 (Human chronic myelogenous
leukemia cell line from bone marrow) cell lysate





Secondary

All lanes : Goat anti-rabbit HRP at 1/2000 dilution

Predicted band size: 21 kDa

Observed band size: 21 kDa

Why choose a recombinant antibody?

 <p>Research with confidence Consistent and reproducible results</p>	 <p>Long-term and scalable supply Recombinant technology</p>
 <p>Success from the first experiment Confirmed specificity</p>	 <p>Ethical standards compliant Animal-free production</p>

Anti-PAEP/Glycodelin antibody [EP870Y] (ab53289)

Please note: All products are "FOR RESEARCH USE ONLY. NOT FOR USE IN DIAGNOSTIC PROCEDURES"

Our Abpromise to you: Quality guaranteed and expert technical support

- Replacement or refund for products not performing as stated on the datasheet
- Valid for 12 months from date of delivery
- Response to your inquiry within 24 hours
- We provide support in Chinese, English, French, German, Japanese and Spanish
- Extensive multi-media technical resources to help you

- We investigate all quality concerns to ensure our products perform to the highest standards

If the product does not perform as described on this datasheet, we will offer a refund or replacement. For full details of the Abpromise, please visit <https://www.abcam.com/abpromise> or contact our technical team.

Terms and conditions

- Guarantee only valid for products bought direct from Abcam or one of our authorized distributors