


## Product datasheet

### Anti-PAF1/PD2 antibody ab137519

KO VALIDATED

★★★★★ 1 Abreviews 5 References 3 Images

#### Overview

Product name	Anti-PAF1/PD2 antibody
Description	Rabbit polyclonal to PAF1/PD2
Host species	Rabbit
Tested applications	<b>Suitable for:</b> WB, IHC-P
Species reactivity	<b>Reacts with:</b> Human <b>Predicted to work with:</b> Mouse, Rat, Cow 
Immunogen	Recombinant fragment corresponding to Human PAF1/PD2 aa 232-481.
Positive control	WB: Wild-type HEK-293T, A549, Daudi, A431 and H1299 whole cell lysates. IHC-P: Cal27 xenograft tissue.
General notes	<p>The Life Science industry has been in the grips of a reproducibility crisis for a number of years. Abcam is leading the way in addressing this with our range of recombinant monoclonal antibodies and knockout edited cell lines for gold-standard validation. Please check that this product meets your needs before purchasing.</p> <p>If you have any questions, special requirements or concerns, please send us an inquiry and/or contact our Support team ahead of purchase. Recommended alternatives for this product can be found below, along with publications, customer reviews and Q&amp;As</p>

#### Properties

Form	Liquid
Storage instructions	Shipped at 4°C. Upon delivery aliquot. Store at -20°C or -80°C. Avoid freeze / thaw cycle.
Storage buffer	pH: 7.00 Preservative: 0.01% Thimerosal (merthiolate) Constituents: 1.21% Tris, 0.75% Glycine, 10% Glycerol (glycerin, glycerine)
Purity	Immunogen affinity purified
Clonality	Polyclonal
Isotype	IgG

## Applications

### The Abpromise guarantee

Our **Abpromise guarantee** covers the use of ab137519 in the following tested applications.

The application notes include recommended starting dilutions; optimal dilutions/concentrations should be determined by the end user.

Application	Abreviews	Notes
WB		1/1000 - 1/10000. Predicted molecular weight: 60 kDa.
IHC-P		1/100 - 1/1000. Perform heat mediated antigen retrieval before commencing with IHC staining protocol using 10mM Citrate buffer (pH6.0) or Tris-EDTA buffer (pH8.0).

## Target

### Function

The mammalian PAF1 complex is a multifunctional complex. The PAF1 complex interacts with RNA polymerase II and may be involved in both initiation and elongation, and in histone methylation and RNA processing. Has oncogenic activity in vivo and in vitro.

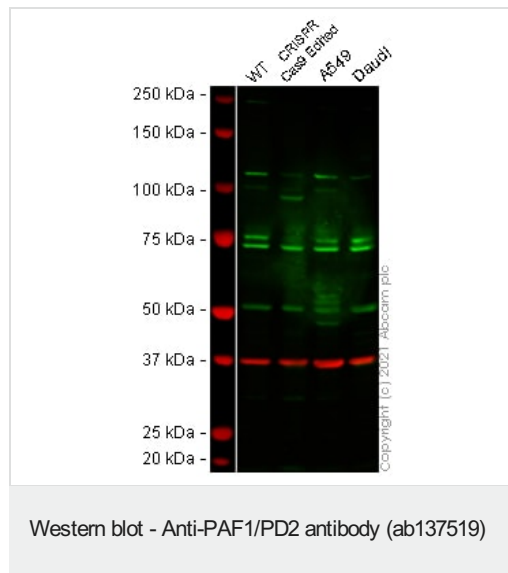
### Sequence similarities

Belongs to the PAF1 family.

### Cellular localization

Nucleus. Punctuate distribution throughout the nucleus except in nucleoli and the perinuclear chromatin.

## Images



**All lanes :** Anti-PAF1/PD2 antibody (ab137519) at 1/1000 dilution

**Lane 1 :** Wild-type HEK-293T cell lysate

**Lane 2 :** PAF1 CRISPR-Cas9 Edited HEK-293T cell lysate

**Lane 3 :** A549 cell lysate

**Lane 4 :** Daudi cell lysate

Lysates/proteins at 20 µg per lane.

Performed under reducing conditions.

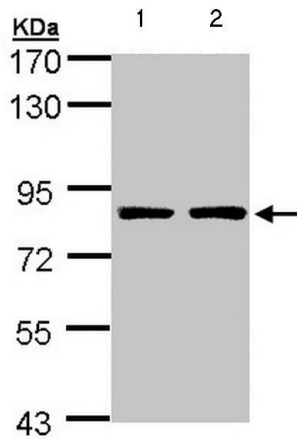
**Predicted band size:** 60 kDa

**Observed band size:** 80 kDa

**Lanes 1 - 4:** Merged signal (red and green). Green - ab137519 observed at 80 kDa. Red - loading control **ab8245** (Mouse anti-GAPDH antibody [6C5]) observed at 37 kDa.

ab137519 was shown to react with PAF1/PD2 in wild-type HEK-293T cells in Western blot with loss of signal observed at the

expected molecular weight in PAF1 CRISPR-Cas9 edited cell line. The band observed at the higher molecular weight in the CRISPR-Cas9 edited sample is likely to represent PAF1 with an insertion. This has not been investigated further and the functional properties of the gene product have not been determined. Wild-type HEK-293T and PAF1 knockout cell lysates were subjected to SDS-PAGE. Membranes were blocked in 3 % milk in TBS-T (0.1 % Tween®) before incubation with ab137519 and **ab8245** (Mouse anti-GAPDH antibody [6C5]) overnight at 4 °C at a 1 in 1000 dilution and a 1 in 20000 dilution respectively. Blots were incubated with Goat anti-Rabbit IgG H&L (IRDye® 800CW) preabsorbed (**ab216773**) and Goat anti-Mouse IgG H&L (IRDye® 680RD) preabsorbed (**ab216776**) secondary antibodies at 1 in 20000 dilution for 1 h at room temperature before imaging.



Western blot - Anti-PAF1/PD2 antibody (ab137519)

**All lanes :** Anti-PAF1/PD2 antibody (ab137519) at 1/5000 dilution

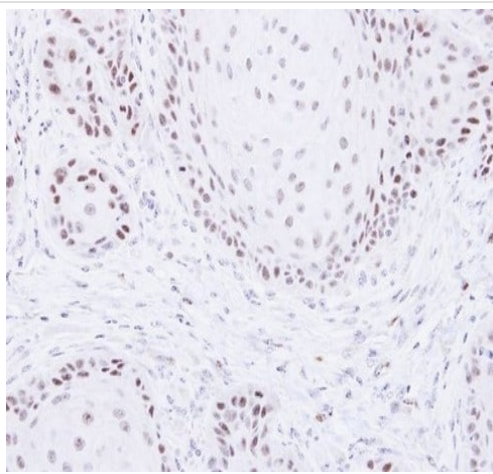
**Lane 1 :** A431 whole cell lysate

**Lane 2 :** H1299 whole cell lysate

Lysates/proteins at 30 µg per lane.

**Predicted band size:** 60 kDa

7.5 % SDS PAGE



Immunohistochemistry (Formalin/PFA-fixed paraffin-embedded sections) - Anti-PAF1/PD2 antibody (ab137519)

Immunohistochemical analysis of paraffin embedded Cal27 xenograft tissue labelling PAF1/PD2 using ab137519 at 1/500.

**Please note:** All products are "FOR RESEARCH USE ONLY. NOT FOR USE IN DIAGNOSTIC PROCEDURES"

### **Our Abpromise to you: Quality guaranteed and expert technical support**

---

- Replacement or refund for products not performing as stated on the datasheet
- Valid for 12 months from date of delivery
- Response to your inquiry within 24 hours
  
- We provide support in Chinese, English, French, German, Japanese and Spanish
- Extensive multi-media technical resources to help you
- We investigate all quality concerns to ensure our products perform to the highest standards

If the product does not perform as described on this datasheet, we will offer a refund or replacement. For full details of the Abpromise, please visit <https://www.abcam.com/abpromise> or contact our technical team.

### **Terms and conditions**

---

- Guarantee only valid for products bought direct from Abcam or one of our authorized distributors