


# Anti-PAF1/PD2 antibody - ChIP Grade ab20662

[8 References](#) [2 Images](#)

## Overview

<b>Product name</b>	Anti-PAF1/PD2 antibody - ChIP Grade
<b>Description</b>	Rabbit polyclonal to PAF1/PD2 - ChIP Grade
<b>Host species</b>	Rabbit
<b>Specificity</b>	From Jan 2024, QC testing of replenishment batches of this polyclonal changed. All tested and expected application and reactive species combinations are still covered by our Abcam product promise. However, we no longer test all applications. For more information on a specific batch, please contact our Scientific Support who will be happy to help.
<b>Tested applications</b>	<b>Suitable for:</b> WB, ChIP
<b>Species reactivity</b>	<b>Reacts with:</b> Human <b>Predicted to work with:</b> Mouse, Rat, Dog, Xenopus laevis 
<b>Immunogen</b>	Synthetic peptide corresponding to Human PAF1/PD2 aa 100-200 (internal sequence) conjugated to keyhole limpet haemocyanin.
<b>Positive control</b>	This antibody gave a positive signal in the following whole cell lysates: HeLa.  This antibody gave a positive signal in chromatin prepared from the following whole cell lysates: HeLa.
<b>General notes</b>	The Life Science industry has been in the grips of a reproducibility crisis for a number of years. Abcam is leading the way in addressing this with our range of recombinant monoclonal antibodies and knockout edited cell lines for gold-standard validation. Please check that this product meets your needs before purchasing.  If you have any questions, special requirements or concerns, please send us an inquiry and/or contact our Support team ahead of purchase. Recommended alternatives for this product can be found below, along with publications, customer reviews and Q&As

## Properties

<b>Form</b>	Liquid
<b>Storage instructions</b>	Shipped at 4°C. Store at +4°C short term (1-2 weeks). Upon delivery aliquot. Store at -20°C or -80°C. Avoid freeze / thaw cycle.
<b>Storage buffer</b>	pH: 7.40 Preservative: 0.02% Sodium azide

Constituents: PBS, 1% BSA

Batches of this product that have a concentration < 1mg/ml may have BSA added as a stabilising agent. If you would like information about the formulation of a specific lot, please contact our scientific support team who will be happy to help.

<b>Purity</b>	Immunogen affinity purified
<b>Clonality</b>	Polyclonal
<b>Isotype</b>	IgG

## Applications

**The Abpromise guarantee** Our **Abpromise guarantee** covers the use of ab20662 in the following tested applications.

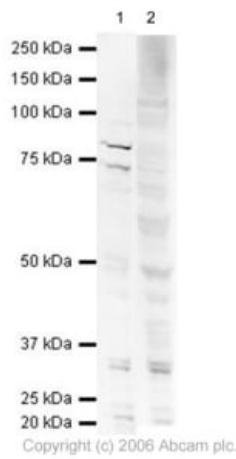
The application notes include recommended starting dilutions; optimal dilutions/concentrations should be determined by the end user.

Application	Abreviews	Notes
<b>WB</b>		Use a concentration of 1 µg/ml. Detects a band of approximately 80 kDa (predicted molecular weight: 60 kDa).
<b>ChIP</b>		Use 5-25 µg for µg of chromatin.

## Target

<b>Function</b>	The mammalian PAF1 complex is a multifunctional complex. The PAF1 complex interacts with RNA polymerase II and may be involved in both initiation and elongation, and in histone methylation and RNA processing. Has oncogenic activity in vivo and in vitro.
<b>Sequence similarities</b>	Belongs to the PAF1 family.
<b>Cellular localization</b>	Nucleus. Punctuate distribution throughout the nucleus except in nucleoli and the perinuclear chromatin.

## Images



Western blot - Anti-PAF1/PD2 antibody - ChIP Grade (ab20662)

**All lanes :** Anti-PAF1/PD2 antibody - ChIP Grade (ab20662) at 1 µg/ml

**Lane 1 :** HeLa (Human epithelial carcinoma cell line) Whole Cell Lysate

**Lane 2 :** HeLa (Human epithelial carcinoma cell line) Whole Cell Lysate with Human PAF1/PD2 peptide ([ab23389](#)) at 1 µg/ml

Lysates/proteins at 20 µg per lane.

### Secondary

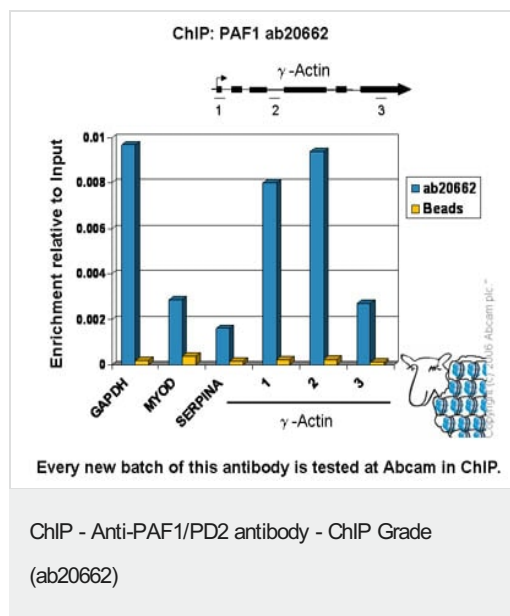
**All lanes :** Goat polyclonal to Rabbit IgG (Alexa Fluor® 680) ([ab28446](#)) at 1/10000 dilution

**Predicted band size:** 60 kDa

**Observed band size:** 85 kDa

**Additional bands at:** 73 kDa (possible cleavage fragment), 73 kDa (possible cross reactivity)

ab20662 recognizes a band at approximately 80kDa, which corresponds in size to PAF1 / PD2. Although it has a calculated molecular weight of ~60kDa, several groups have shown that it migrates at a size of 80-90kDa (see Moniaux, et.al., Oncogene Feb. 2006, Yart et.al., Mol Cell Biol 25:5052-60, 2005, and Rozenblatt-Rosen, et.al., Mol Cell Biol 25:612-20, 2005). There is also a smaller band at ~73kDa which may be a degradation product. Both bands are competed away by the addition of immunizing peptide, suggesting that the interaction is specific.



Chromatin was prepared from Hela cells according to the Abcam X-ChIP protocol. Cells were fixed with formaldehyde for 10min. The ChIP was performed with 25µg of chromatin, 5µg of ab20662 (blue), and 20µl of Protein A/G sepharose beads **in RIPA buffer**. No antibody was added to the beads control (yellow). The immunoprecipitated DNA was quantified on the GAPDH (active) and MYO-D and SERPINA (inactive) promoters and over the γ-Actin gene (active). Schematic diagram of the γ-Actin gene is shown on the top of the figure. Black boxes represent exons and thin lines represent introns. PCR products are depicted as bars under the gene.

**Please note:** All products are "FOR RESEARCH USE ONLY. NOT FOR USE IN DIAGNOSTIC PROCEDURES"

### Our Abpromise to you: Quality guaranteed and expert technical support

- Replacement or refund for products not performing as stated on the datasheet
- Valid for 12 months from date of delivery
- Response to your inquiry within 24 hours
- We provide support in Chinese, English, French, German, Japanese and Spanish
- Extensive multi-media technical resources to help you
- We investigate all quality concerns to ensure our products perform to the highest standards

If the product does not perform as described on this datasheet, we will offer a refund or replacement. For full details of the Abpromise, please visit <https://www.abcam.com/abpromise> or contact our technical team.

### Terms and conditions

- Guarantee only valid for products bought direct from Abcam or one of our authorized distributors