

Product datasheet

Anti-PAK1 (phospho S20) antibody [EP655Y] ab51244

Recombinant

RabMAb

2 Images

Overview

Product name	Anti-PAK1 (phospho S20) antibody [EP655Y]
Description	Rabbit monoclonal [EP655Y] to PAK1 (phospho S20)
Host species	Rabbit
Tested applications	Suitable for: WB Unsuitable for: Flow Cyt, IHC-P or IP
Species reactivity	Reacts with: Human
Immunogen	Synthetic peptide corresponding to Human PAK1 (phospho S20). Numbering corresponds to mature PAK1 without Initiator methionine.
Positive control	HeLa cell lysate.
General notes	<p>This product is a recombinant monoclonal antibody, which offers several advantages including:</p> <ul style="list-style-type: none"> - High batch-to-batch consistency and reproducibility - Improved sensitivity and specificity - Long-term security of supply - Animal-free production <p>For more information see here.</p> <p>Our RabMAb[®] technology is a patented hybridoma-based technology for making rabbit monoclonal antibodies. For details on our patents, please refer to RabMAb[®] patents.</p> <p>Mouse, Rat: We have preliminary internal testing data to indicate this antibody may not react with these species. Please contact us for more information.</p>

Properties

Form	Liquid
Storage instructions	Shipped at 4°C. Upon delivery aliquot and store at -20°C. Avoid freeze / thaw cycles.
Storage buffer	<p>pH: 7.2</p> <p>Preservative: 0.01% Sodium azide</p> <p>Constituents: 0.31% Sodium citrate, 0.175% Sodium chloride, 0.0172% EDTA, 59% PBS, 40% Glycerol (glycerin, glycerine), 0.05% BSA</p>
Purity	Protein A purified

Clonality	Monoclonal
Clone number	EP655Y
Isotype	IgG

Applications

The Abpromise guarantee Our **Abpromise guarantee** covers the use of ab51244 in the following tested applications. The application notes include recommended starting dilutions; optimal dilutions/concentrations should be determined by the end user.

Application	Abreviews	Notes
WB		1/2000. Detects a band of approximately 61 kDa (predicted molecular weight: 61 kDa).

Application notes Is unsuitable for Flow Cyt, IHC-P or IP.

Target

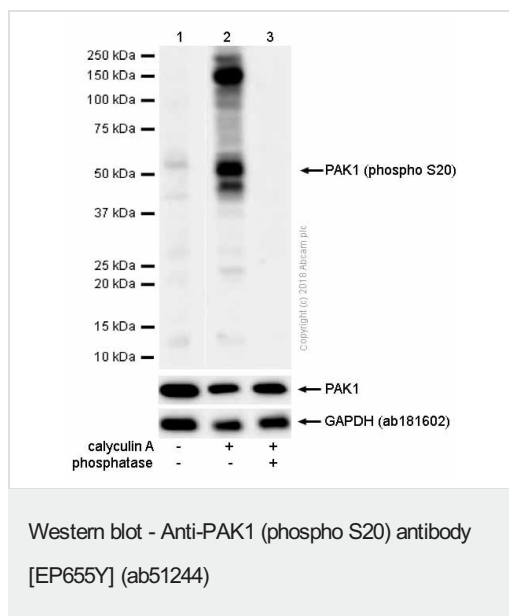
Function The activated kinase acts on a variety of targets. Likely to be the GTPase effector that links the Rho-related GTPases to the JNK MAP kinase pathway. Activated by CDC42 and RAC1. Involved in dissolution of stress fibers and reorganization of focal complexes. Involved in regulation of microtubule biogenesis through phosphorylation of TBCB. Activity is inhibited in cells undergoing apoptosis, potentially due to binding of CDC2L1 and CDC2L2.

Sequence similarities Belongs to the protein kinase superfamily. STE Ser/Thr protein kinase family. STE20 subfamily. Contains 1 CRIB domain. Contains 1 protein kinase domain.

Post-translational modifications Autophosphorylated when activated by CDC42/p21 and RAC1.

Cellular localization Cytoplasm. Cell junction > focal adhesion. Recruited to focal adhesions upon activation.

Images



All lanes : Anti-PAK1 (phospho S20) antibody [EP655Y] (ab51244) at 1/1000 dilution

Lane 1 : HeLa (Human cervix adenocarcinoma epithelial cell)

Whole cell lysates

Lane 2 : HeLa (Human cervix adenocarcinoma epithelial cell)

treated with 100mM calyculin A for 30 minutes Whole cell lysates

Lane 3 : HeLa (Human cervix adenocarcinoma epithelial cell)

treated with 100mM calyculin A for 30 minutes. Then the membrane was incubated with phosphatase.

Lysates/proteins at 15 µg per lane.

Secondary

All lanes : Goat Anti-Rabbit IgG H&L (HRP) (**ab97051**) at 1/20000 dilution

Predicted band size: 61 kDa

Observed band size: 60 kDa

Exposure time: 3 minutes

We are unable to define the extra bands

Blocking buffer: 5% NFDM/TBST

Why choose a recombinant antibody?

Research with confidence
Consistent and reproducible results

Long-term and scalable supply
Recombinant technology

Success from the first experiment
Confirmed specificity

Ethical standards compliant
Animal-free production

Anti-PAK1 (phospho S20) antibody [EP655Y] (ab51244)

Please note: All products are "FOR RESEARCH USE ONLY. NOT FOR USE IN DIAGNOSTIC PROCEDURES"

Our Abpromise to you: Quality guaranteed and expert technical support

- Replacement or refund for products not performing as stated on the datasheet
- Valid for 12 months from date of delivery
- Response to your inquiry within 24 hours

- We provide support in Chinese, English, French, German, Japanese and Spanish
- Extensive multi-media technical resources to help you
- We investigate all quality concerns to ensure our products perform to the highest standards

If the product does not perform as described on this datasheet, we will offer a refund or replacement. For full details of the Abpromise, please visit <https://www.abcam.com/abpromise> or contact our technical team.

Terms and conditions

- Guarantee only valid for products bought direct from Abcam or one of our authorized distributors