


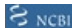


## Product datasheet

### Anti-PAMCI antibody ab150853

3 Images

#### Overview

Product name	Anti-PAMCI antibody
Description	Rabbit polyclonal to PAMCI
Host species	Rabbit
Tested applications	<b>Suitable for:</b> IHC-P, WB
Species reactivity	<b>Reacts with:</b> Mouse, Rat, Human
Immunogen	Recombinant fragment corresponding to amino acids 357-435 of Human PAMCI  <b>Run BLAST with</b>   <b>Run BLAST with</b> 
Positive control	Human breast tissue, RT4 cell lysate
General notes	<p>The Life Science industry has been in the grips of a reproducibility crisis for a number of years. Abcam is leading the way in addressing this with our range of recombinant monoclonal antibodies and knockout edited cell lines for gold-standard validation. Please check that this product meets your needs before purchasing.</p> <p>If you have any questions, special requirements or concerns, please send us an inquiry and/or contact our Support team ahead of purchase. Recommended alternatives for this product can be found below, along with publications, customer reviews and Q&amp;As</p>

#### Properties

Form	Liquid
Storage instructions	Shipped at 4°C. Upon delivery aliquot and store at -20°C. Avoid repeated freeze / thaw cycles.
Storage buffer	pH: 7.20 Preservative: 0.02% Sodium azide Constituents: 40% Glycerol (glycerin, glycerine), 59% PBS
Purity	Immunogen affinity purified
Clonality	Polyclonal
Isotype	IgG

#### Applications

**The Abpromise guarantee** Our **Abpromise guarantee** covers the use of ab150853 in the following tested applications.

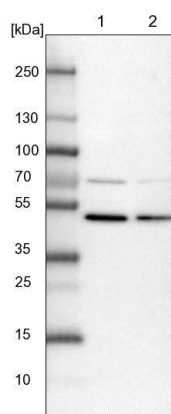
The application notes include recommended starting dilutions; optimal dilutions/concentrations should be determined by the end user.

Application	Abreviews	Notes
IHC-P		1/200 - 1/500. Perform heat mediated antigen retrieval with citrate buffer pH 6 before commencing with IHC staining protocol.
WB		Use a concentration of 0.04 - 0.4 µg/ml. Predicted molecular weight: 50 kDa.

## Target

<b>Function</b>	May play a role in regulating vesicular trafficking in cells.
<b>Sequence similarities</b>	Contains 1 Ras-associating domain.
<b>Cellular localization</b>	Endosome. Accumulates on perinuclear endosomes.

## Images



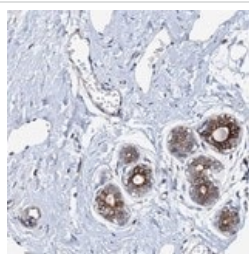
Western blot - Anti-PAMCI antibody (ab150853)

**All lanes :** Anti-PAMCI antibody (ab150853) at 1/100 dilution

**Lane 1 :** NIH-3T3 cell lysate (Mouse embryonic cells)

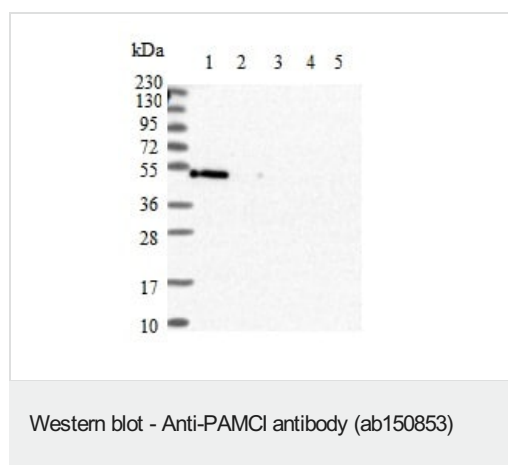
**Lane 2 :** NBT-II cell lysate (Rat Wistar bladder tumour cells)

**Predicted band size:** 50 kDa



Immunohistochemistry (Formalin/PFA-fixed paraffin-embedded sections) - Anti-PAMCI antibody (ab150853)

Immunohistochemical analysis of paraffin-embedded Human breast tissue labeling PAMCI with ab150853 at 1/200 dilution



**All lanes :** Anti-PAMCI antibody (ab150853) at 1/250 dilution

**Lane 1 :** RT4 cell lysate

**Lane 2 :** U251 MG cell lysate

**Lane 3 :** Human plasma lysate

**Lane 4 :** Human liver lysate

**Lane 5 :** Human tonsil lysate

**Predicted band size:** 50 kDa

**Please note:** All products are "FOR RESEARCH USE ONLY. NOT FOR USE IN DIAGNOSTIC PROCEDURES"

### Our Abpromise to you: Quality guaranteed and expert technical support

---

- Replacement or refund for products not performing as stated on the datasheet
- Valid for 12 months from date of delivery
- Response to your inquiry within 24 hours
- We provide support in Chinese, English, French, German, Japanese and Spanish
- Extensive multi-media technical resources to help you
- We investigate all quality concerns to ensure our products perform to the highest standards

If the product does not perform as described on this datasheet, we will offer a refund or replacement. For full details of the Abpromise, please visit <https://www.abcam.com/abpromise> or contact our technical team.

### Terms and conditions

---

- Guarantee only valid for products bought direct from Abcam or one of our authorized distributors