


# Anti-pan Sodium Channel antibody ab53724

[1 References](#) [1 Image](#)

## Overview

<b>Product name</b>	Anti-pan Sodium Channel antibody
<b>Description</b>	Rabbit polyclonal to pan Sodium Channel
<b>Host species</b>	Rabbit
<b>Specificity</b>	Detects endogenous levels of total sodium channel protein.
<b>Tested applications</b>	<b>Suitable for:</b> WB
<b>Species reactivity</b>	<b>Reacts with:</b> Human <b>Predicted to work with:</b> Mouse, Rat 
<b>Immunogen</b>	Synthetic peptide corresponding to Human pan Sodium Channel.
<b>Positive control</b>	Extracts from HuvEc cells.
<b>General notes</b>	<p>The Life Science industry has been in the grips of a reproducibility crisis for a number of years. Abcam is leading the way in addressing this with our range of recombinant monoclonal antibodies and knockout edited cell lines for gold-standard validation. Please check that this product meets your needs before purchasing.</p> <p>If you have any questions, special requirements or concerns, please send us an inquiry and/or contact our Support team ahead of purchase. Recommended alternatives for this product can be found below, along with publications, customer reviews and Q&amp;As</p>

## Properties

<b>Form</b>	Liquid
<b>Storage instructions</b>	Shipped at 4°C. Upon delivery aliquot and store at -20°C. Avoid freeze / thaw cycles.
<b>Storage buffer</b>	<p>pH: 7.40</p> <p>Preservative: 0.02% Sodium azide</p> <p>Constituents: 50% Glycerol (glycerin, glycerine), 0.87% Sodium chloride, PBS</p> <p>Without Mg+2 and Ca+2</p>
<b>Purity</b>	Immunogen affinity purified
<b>Clonality</b>	Polyclonal
<b>Isotype</b>	IgG

## Applications

### The Abpromise guarantee

Our **Abpromise guarantee** covers the use of ab53724 in the following tested applications.

The application notes include recommended starting dilutions; optimal dilutions/concentrations should be determined by the end user.

Application	Abreviews	Notes
WB		1/500 - 1/1000. Detects a band of approximately 227 kDa (predicted molecular weight: 227 kDa).

## Target

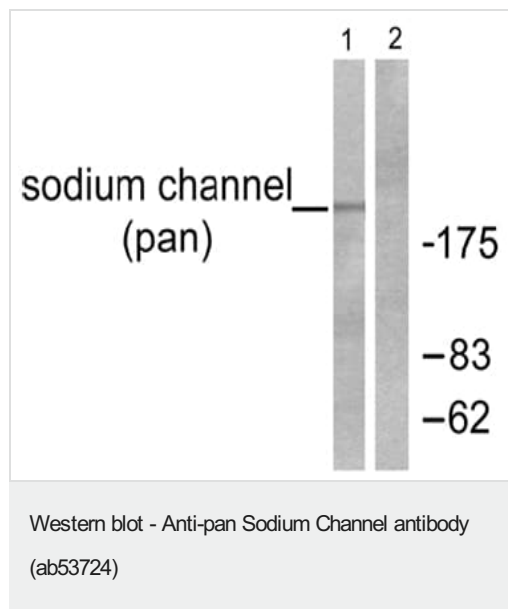
### Relevance

The pan sodium ion channel, SCN5A, is a cardiac sodium channel distinct from those in nerve and muscle. It is a tetrodotoxin-resistant Na(+) channel isoform. SCN5A mediates the voltage-dependent sodium ion permeability of excitable membranes by opening or closing in response to the voltage difference across the membrane. Na(+) ions pass in accordance with their electrochemical gradient. This channel is responsible for the initial upstroke of the action potential in the electrocardiogram. Defects in SCN5A are involved in many diseases including: progressive familial heart block type I (PFHBI), also known as Lenegre-Lev disease or progressive cardiac conduction defect (PCCD); long QT syndrome type 3 (LQT3); Brugada syndrome; sick sinus syndrome 1 (SSS1); idiopathic ventricular fibrillation (IVF), also called paroxysmal familial ventricular fibrillation; sudden infant death syndrome (SIDS); familial atrial standstill and dilated cardiomyopathy 1E (CMD1E).

### Cellular localization

Cell Membrane; Multi-pass membrane protein.

## Images



**All lanes :** Anti-pan Sodium Channel antibody (ab53724) at 1/500 dilution

**Lane 1 :** extracts from HuvEc cells

**Lane 2 :** extracts from HuvEc cells with immunizing peptide

**Predicted band size:** 227 kDa

**Observed band size:** 227 kDa

**Please note:** All products are "FOR RESEARCH USE ONLY. NOT FOR USE IN DIAGNOSTIC PROCEDURES"

**Our Abpromise to you: Quality guaranteed and expert technical support**

- 
- Replacement or refund for products not performing as stated on the datasheet
  - Valid for 12 months from date of delivery
  - Response to your inquiry within 24 hours
  
  - We provide support in Chinese, English, French, German, Japanese and Spanish
  - Extensive multi-media technical resources to help you
  - We investigate all quality concerns to ensure our products perform to the highest standards

If the product does not perform as described on this datasheet, we will offer a refund or replacement. For full details of the Abpromise, please visit <https://www.abcam.com/abpromise> or contact our technical team.

#### **Terms and conditions**

---

- Guarantee only valid for products bought direct from Abcam or one of our authorized distributors