

Product datasheet

Anti-Pancreatic alpha amylase antibody ab189341

★★★★★ [1 Abreviews](#) [2 References](#) [1 Image](#)

Overview

| | |
|----------------------------|--|
| Product name | Anti-Pancreatic alpha amylase antibody |
| Description | Sheep polyclonal to Pancreatic alpha amylase |
| Host species | Sheep |
| Specificity | This antibody recongizes native AMY2A |
| Tested applications | Suitable for: IHC-P |
| Species reactivity | Reacts with: Human |
| Immunogen | Full length native protein (purified) corresponding to Human Pancreatic alpha amylase aa 1 to the C-terminus. Database link: P04746 |

 [Run BLAST with](#)

 [Run BLAST with](#)

General notes

The Life Science industry has been in the grips of a reproducibility crisis for a number of years. Abcam is leading the way in addressing this with our range of recombinant monoclonal antibodies and knockout edited cell lines for gold-standard validation. Please check that this product meets your needs before purchasing.

If you have any questions, special requirements or concerns, please send us an inquiry and/or contact our Support team ahead of purchase. Recommended alternatives for this product can be found below, along with publications, customer reviews and Q&As

Properties

| | |
|-----------------------------|---|
| Form | Liquid |
| Storage instructions | Shipped at 4°C. Store at +4°C short term (1-2 weeks). Upon delivery aliquot. Store at -20°C long term. Avoid freeze / thaw cycle. |
| Storage buffer | Preservative: 0.09% Sodium azide Constituent: 99% PBS |
| Purity | Protein G purified |
| Clonality | Polyclonal |
| Isotype | IgG |

Applications

The Abpromise guarantee

Our **Abpromise guarantee** covers the use of ab189341 in the following tested applications.

The application notes include recommended starting dilutions; optimal dilutions/concentrations should be determined by the end user.

| Application | Abreviews | Notes |
|-------------|-----------|---|
| IHC-P | ★★★★★ (1) | Use a concentration of 2.5 µg/ml. Perform heat mediated antigen retrieval before commencing with IHC staining protocol. |

Target

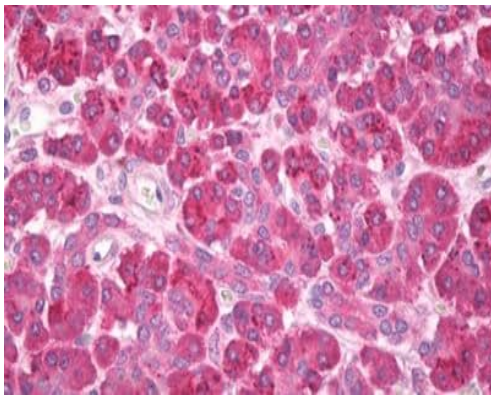
Relevance

Pancreatic amylase is a digestive enzyme secreted by the pancreas. It consists of a single polypeptide chain with a molecular weight of 54 kDa. Pancreatic amylase occurs in serum at a concentration of about 60µg/L, from a total amylase concentration in serum of about 120µg/L. Pancreatic amylase and salivary amylase are the products of separate genes and, although they share 98% amino acid sequence homology, they differ in molecular size, isoelectric point and antigenic properties. Measurement of amylase concentrations in serum is a diagnostic test for various pancreatic disorders (especially acute and relapsing pancreatitis).

Cellular localization

Secreted protein; extracellular space.

Images



Immunohistochemical analysis of formalin-fixed, paraffin-embedded Human pancreas tissue, labeling AMY2A using ab189341 at 2.5 µg/ml.

Immunohistochemistry (Formalin/PFA-fixed paraffin-embedded sections) - Anti-Pancreatic alpha amylase antibody (ab189341)

Please note: All products are "FOR RESEARCH USE ONLY. NOT FOR USE IN DIAGNOSTIC PROCEDURES"

Our Abpromise to you: Quality guaranteed and expert technical support

- Replacement or refund for products not performing as stated on the datasheet
- Valid for 12 months from date of delivery
- Response to your inquiry within 24 hours
- We provide support in Chinese, English, French, German, Japanese and Spanish

- Extensive multi-media technical resources to help you
- We investigate all quality concerns to ensure our products perform to the highest standards

If the product does not perform as described on this datasheet, we will offer a refund or replacement. For full details of the Abpromise, please visit <https://www.abcam.com/abpromise> or contact our technical team.

Terms and conditions

- Guarantee only valid for products bought direct from Abcam or one of our authorized distributors