




Anti-Pancreatic alpha amylase antibody ab231119

4 Images

Overview

Product name	Anti-Pancreatic alpha amylase antibody
Description	Rabbit polyclonal to Pancreatic alpha amylase
Host species	Rabbit
Tested applications	Suitable for: IHC-P, WB
Species reactivity	Reacts with: Rat Predicted to work with: Mouse, Human, Pig 
Immunogen	Recombinant fragment (His-T7-tag) corresponding to Rat Pancreatic alpha amylase aa 200-500. Expressed in E. coli. Database link: G3V844 <div>  Run BLAST with  Run BLAST with </div>
Positive control	IHC-P: Rat pancreas tissue. WB: Recombinant rat Pancreatic alpha amylase protein. Rat pancreas lysate and serum.
General notes	<p>The Life Science industry has been in the grips of a reproducibility crisis for a number of years. Abcam is leading the way in addressing this with our range of recombinant monoclonal antibodies and knockout edited cell lines for gold-standard validation. Please check that this product meets your needs before purchasing.</p> <p>If you have any questions, special requirements or concerns, please send us an inquiry and/or contact our Support team ahead of purchase. Recommended alternatives for this product can be found below, along with publications, customer reviews and Q&As</p>

Properties

Form	Liquid
Storage instructions	Shipped at 4°C. Store at +4°C short term (1-2 weeks). Upon delivery aliquot. Store at -20°C long term. Avoid freeze / thaw cycle.
Storage buffer	pH: 7.40 Preservative: 0.02% Sodium azide Constituents: 44.12% PBS, 55.77% Glycerol (glycerin, glycerine)
Purity	Protein A purified
Purification notes	Antigen-specific affinity chromatography followed by Protein A affinity chromatography
Clonality	Polyclonal

Isotype

IgG

Applications

The Abpromise guarantee

Our **Abpromise guarantee** covers the use of ab231119 in the following tested applications.

The application notes include recommended starting dilutions; optimal dilutions/concentrations should be determined by the end user.

Application	Abreviews	Notes
IHC-P		Use a concentration of 5 - 20 µg/ml.
WB		Use a concentration of 0.2 - 2 µg/ml.

Target

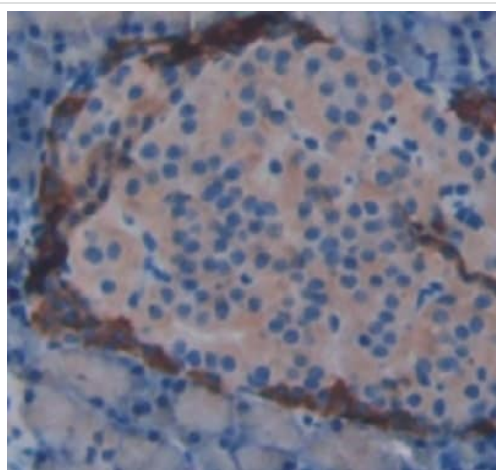
Relevance

Pancreatic amylase is a digestive enzyme secreted by the pancreas. It consists of a single polypeptide chain with a molecular weight of 54 kDa. Pancreatic amylase occurs in serum at a concentration of about 60µg/L, from a total amylase concentration in serum of about 120µg/L. Pancreatic amylase and salivary amylase are the products of separate genes and, although they share 98% amino acid sequence homology, they differ in molecular size, isoelectric point and antigenic properties. Measurement of amylase concentrations in serum is a diagnostic test for various pancreatic disorders (especially acute and relapsing pancreatitis).

Cellular localization

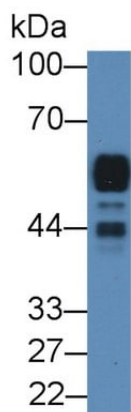
Secreted protein; extracellular space.

Images



Formalin-fixed, paraffin-embedded rat pancreas tissue stained for Pancreatic alpha amylase with ab231119 at 20 µg/ml in immunohistochemical analysis. DAB staining.

Immunohistochemistry (Formalin/PFA-fixed paraffin-embedded sections) - Anti-Pancreatic alpha amylase antibody (ab231119)



Western blot - Anti-Pancreatic alpha amylase antibody (ab231119)

Anti-Pancreatic alpha amylase antibody (ab231119) at 2 µg/ml +
Rat pancreas lysate

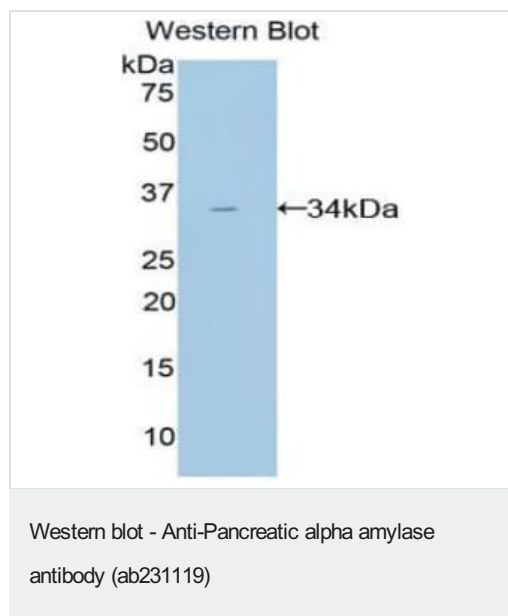
Developed using the ECL technique.



Western blot - Anti-Pancreatic alpha amylase antibody (ab231119)

Anti-Pancreatic alpha amylase antibody (ab231119) at 2 µg/ml +
Rat serum

Developed using the ECL technique.



Anti-Pancreatic alpha amylase antibody (ab231119) at 2 µg/ml +
Recombinant rat Pancreatic alpha amylase protein

Developed using the ECL technique.

Please note: All products are "FOR RESEARCH USE ONLY. NOT FOR USE IN DIAGNOSTIC PROCEDURES"

Our Abpromise to you: Quality guaranteed and expert technical support

- Replacement or refund for products not performing as stated on the datasheet
- Valid for 12 months from date of delivery
- Response to your inquiry within 24 hours
- We provide support in Chinese, English, French, German, Japanese and Spanish
- Extensive multi-media technical resources to help you
- We investigate all quality concerns to ensure our products perform to the highest standards

If the product does not perform as described on this datasheet, we will offer a refund or replacement. For full details of the Abpromise, please visit <https://www.abcam.com/abpromise> or contact our technical team.

Terms and conditions

- Guarantee only valid for products bought direct from Abcam or one of our authorized distributors