


Product datasheet

Anti-Pannexin 1 antibody ab124131

★★★★☆ [2 Abreviews](#) [14 References](#) [1 Image](#)

Overview

Product name	Anti-Pannexin 1 antibody
Description	Rabbit polyclonal to Pannexin 1
Host species	Rabbit
Tested applications	Suitable for: WB, IHC-P
Species reactivity	Reacts with: Rat, Human Predicted to work with: Mouse, Rabbit, Pig, Macaque monkey, Gorilla, Chinese hamster, Orangutan 
Immunogen	Synthetic peptide corresponding to Human Pannexin 1 aa 150-250 conjugated to keyhole limpet haemocyanin. (Peptide available as ab124143)
Positive control	WB: Human brain tissue lysate.
General notes	<p>The Life Science industry has been in the grips of a reproducibility crisis for a number of years. Abcam is leading the way in addressing this with our range of recombinant monoclonal antibodies and knockout edited cell lines for gold-standard validation. Please check that this product meets your needs before purchasing.</p> <p>If you have any questions, special requirements or concerns, please send us an inquiry and/or contact our Support team ahead of purchase. Recommended alternatives for this product can be found below, along with publications, customer reviews and Q&As</p>

Properties

Form	Liquid
Storage instructions	Shipped at 4°C. Store at +4°C short term (1-2 weeks). Upon delivery aliquot. Store at -20°C or -80°C. Avoid freeze / thaw cycle.
Purity	Immunogen affinity purified
Clonality	Polyclonal
Isotype	IgG

Applications

The Abpromise guarantee

Our **Abpromise guarantee** covers the use of ab124131 in the following tested applications.

The application notes include recommended starting dilutions; optimal dilutions/concentrations should be determined by the end user.

Application	Abreviews	Notes
WB	★★★★★ (1)	Use a concentration of 1 µg/ml. Detects a band of approximately 45 kDa (predicted molecular weight: 48 kDa).
IHC-P		1/1000. PubMed: 24269631

Target

Function

Structural component of the gap junctions and the hemichannels. May play a role as a Ca(2+)-leak channel to regulate ER Ca(2+) homeostasis.

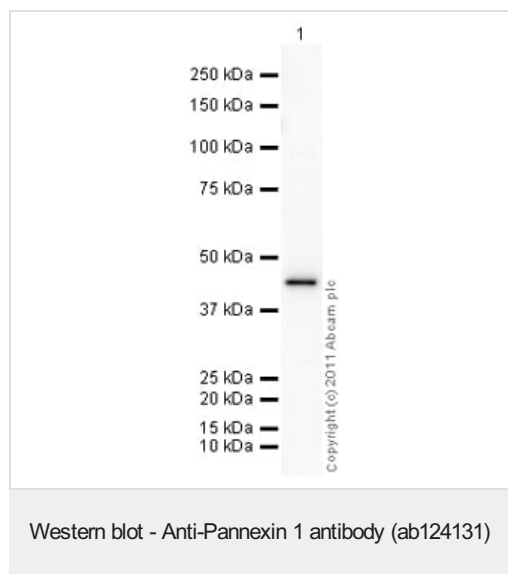
Sequence similarities

Belongs to the pannexin family.

Cellular localization

Cell membrane. Cell junction > gap junction. Endoplasmic reticulum membrane.

Images



Anti-Pannexin 1 antibody (ab124131) at 1 µg/ml + Human brain tissue lysate - total protein ([ab29466](#)) at 10 µg

Secondary

Goat Anti-Rabbit IgG H&L (HRP) preadsorbed ([ab97080](#)) at 1/5000 dilution

Developed using the ECL technique.

Performed under reducing conditions.

Predicted band size: 48 kDa

Observed band size: 45 kDa

Exposure time: 30 seconds

The predicted molecular weight of Pannexin 1 is 48 kDa (SwissProt), however we expect to observe a banding pattern at 45 kDa. Abcam welcomes customer feedback and would appreciate any comments regarding this product and the data presented above.

Our Abpromise to you: Quality guaranteed and expert technical support

- Replacement or refund for products not performing as stated on the datasheet
- Valid for 12 months from date of delivery
- Response to your inquiry within 24 hours

- We provide support in Chinese, English, French, German, Japanese and Spanish
- Extensive multi-media technical resources to help you
- We investigate all quality concerns to ensure our products perform to the highest standards

If the product does not perform as described on this datasheet, we will offer a refund or replacement. For full details of the Abpromise, please visit <https://www.abcam.com/abpromise> or contact our technical team.

Terms and conditions

- Guarantee only valid for products bought direct from Abcam or one of our authorized distributors