


Anti-PAPP A2 antibody ab117743

★ ★ ★ ★ ★ [1 Abreviews](#) [2 Images](#)

Overview

Product name	Anti-PAPP A2 antibody
Description	Rabbit polyclonal to PAPP A2
Host species	Rabbit
Tested applications	Suitable for: IHC-P
Species reactivity	Reacts with: Human Predicted to work with: Mouse, Rat 
Immunogen	Synthetic peptide conjugated to KLH, corresponding to a region from the N-terminus of Human PAPP A2.
Positive control	Human Heart and Placenta tissues.
General notes	<p>The Life Science industry has been in the grips of a reproducibility crisis for a number of years. Abcam is leading the way in addressing this with our range of recombinant monoclonal antibodies and knockout edited cell lines for gold-standard validation. Please check that this product meets your needs before purchasing.</p> <p>If you have any questions, special requirements or concerns, please send us an inquiry and/or contact our Support team ahead of purchase. Recommended alternatives for this product can be found below, along with publications, customer reviews and Q&As</p>

Properties

Form	Liquid
Storage instructions	Shipped at 4°C. Store at +4°C short term (1-2 weeks). Store at -20°C or -80°C. Avoid freeze / thaw cycle.
Storage buffer	pH: 7.4 Preservative: 0.02% Sodium azide Constituent: 99% PBS
Purity	Protein A purified
Clonality	Polyclonal
Isotype	IgG

Applications

The Abpromise guarantee

Our **Abpromise guarantee** covers the use of ab117743 in the following tested applications.

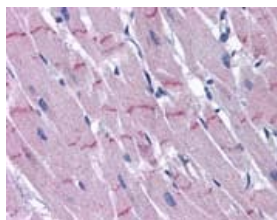
The application notes include recommended starting dilutions; optimal dilutions/concentrations should be determined by the end user.

Application	Abreviews	Notes
IHC-P		Use a concentration of 5 µg/ml.

Target

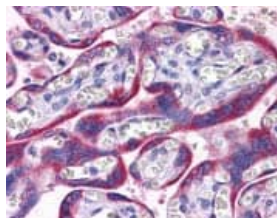
Function	Metalloproteinase which specifically cleaves IGFBP-5. Shows limited proteolysis toward IGFBP-3.
Tissue specificity	Expressed abundantly in placenta, and non-pregnant mammary gland with low expression in the kidney, fetal brain and pancreas.
Sequence similarities	Belongs to the peptidase M43B family. Contains 5 Sushi (CCP/SCR) domains.
Cellular localization	Secreted.

Images



Immunohistochemistry (Formalin/PFA-fixed paraffin-embedded sections) - Anti-PAPP A2 antibody (ab117743)

ab117743, at 5 µg/ml, staining PAPP A2 in Formalin-fixed, Paraffin-embedded Human heart tissue by Immunohistochemistry.



Immunohistochemistry (Formalin/PFA-fixed paraffin-embedded sections) - Anti-PAPP A2 antibody (ab117743)

ab117743, at 5 µg/ml, staining PAPP A2 in Formalin-fixed, Paraffin-embedded Human Placenta tissue by Immunohistochemistry.

Please note: All products are "FOR RESEARCH USE ONLY. NOT FOR USE IN DIAGNOSTIC PROCEDURES"

Our Abpromise to you: Quality guaranteed and expert technical support

- Replacement or refund for products not performing as stated on the datasheet
- Valid for 12 months from date of delivery
- Response to your inquiry within 24 hours

- We provide support in Chinese, English, French, German, Japanese and Spanish
- Extensive multi-media technical resources to help you
- We investigate all quality concerns to ensure our products perform to the highest standards

If the product does not perform as described on this datasheet, we will offer a refund or replacement. For full details of the Abpromise, please visit <https://www.abcam.com/abpromise> or contact our technical team.

Terms and conditions

- Guarantee only valid for products bought direct from Abcam or one of our authorized distributors