

Product datasheet

Anti-PAR1/Thrombin Receptor antibody [5E2E6] ab233741

[1 References](#) [3 Images](#)

Overview

Product name	Anti-PAR1/Thrombin Receptor antibody [5E2E6]
Description	Mouse monoclonal [5E2E6] to PAR1/Thrombin Receptor
Host species	Mouse
Tested applications	Suitable for: IHC-P, WB
Species reactivity	Reacts with: Human
Immunogen	Recombinant fragment corresponding to Human PAR1/Thrombin Receptor aa 1-200. (Expressed in E.coli). Database link: P25116 Run BLAST with Run BLAST with
Positive control	WB: Recombinant human PAR1/Thrombin Receptor protein; PAR1/Thrombin Receptor -hlgGfc transfected HEK293 cell lysate. IHC-P: Human rectum cancer.
General notes	<p>The Life Science industry has been in the grips of a reproducibility crisis for a number of years. Abcam is leading the way in addressing this with our range of recombinant monoclonal antibodies and knockout edited cell lines for gold-standard validation. Please check that this product meets your needs before purchasing.</p> <p>If you have any questions, special requirements or concerns, please send us an inquiry and/or contact our Support team ahead of purchase. Recommended alternatives for this product can be found below, along with publications, customer reviews and Q&As</p>

Properties

Form	Liquid
Storage instructions	Shipped at 4°C. Store at +4°C short term (1-2 weeks). Upon delivery aliquot. Store at -20°C long term. Avoid freeze / thaw cycle.
Storage buffer	Preservative: 0.05% Sodium azide Constituent: PBS
Purity	Protein G purified
Clonality	Monoclonal
Clone number	5E2E6

Isotype

IgG1

Applications

The Abpromise guarantee

Our **Abpromise guarantee** covers the use of ab233741 in the following tested applications.

The application notes include recommended starting dilutions; optimal dilutions/concentrations should be determined by the end user.

Application	Abreviews	Notes
IHC-P		1/200 - 1/1000.
WB		1/500 - 1/2000.

Target

Function

High affinity receptor for activated thrombin coupled to G proteins that stimulate phosphoinositide hydrolysis. May play a role in platelets activation and in vascular development.

Tissue specificity

Platelets and vascular endothelial cells.

Sequence similarities

Belongs to the G-protein coupled receptor 1 family.

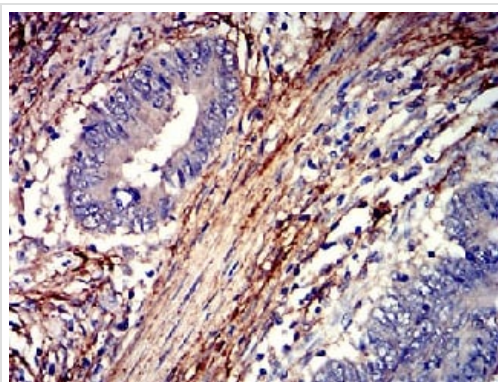
Post-translational modifications

A proteolytic cleavage generates a new N-terminus that functions as a tethered ligand. Phosphorylated; probably mediating desensitization prior to the uncoupling and internalization of the receptor.

Cellular localization

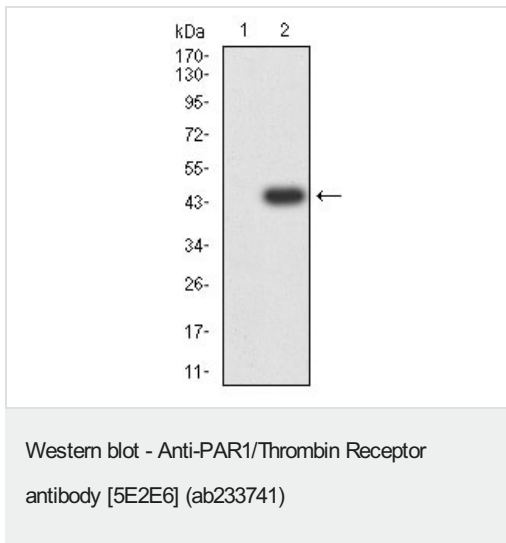
Cell membrane.

Images



Formalin-fixed, paraffin-embedded human rectum cancer tissue stained for PAR1/Thrombin Receptor using ab233741 at 1/200 dilution in immunohistochemical analysis. DAB staining.

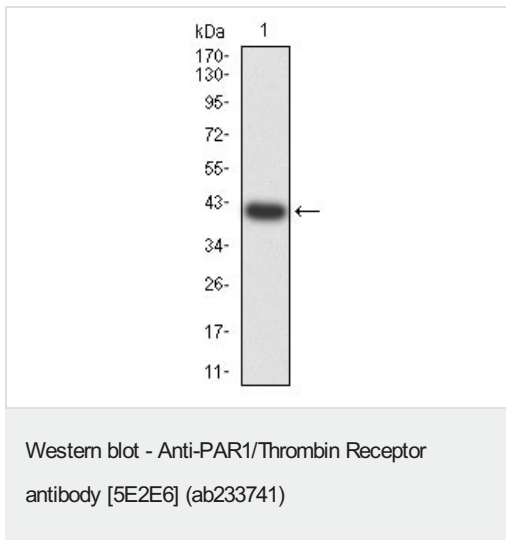
Immunohistochemistry (Formalin/PFA-fixed paraffin-embedded sections) - Anti-PAR1/Thrombin Receptor antibody [5E2E6] (ab233741)



All lanes : Anti-PAR1/Thrombin Receptor antibody [5E2E6] (ab233741) at 1/500 dilution

Lane 1 : HEK-293 (human epithelial cell line from embryonic kidney) cell lysate

Lane 2 : PAR1/Thrombin Receptor-hlgGFc transfected HEK-293 cell lysate



Anti-PAR1/Thrombin Receptor antibody [5E2E6] (ab233741) at 1/500 dilution + Recombinant human PAR1/Thrombin Receptor protein

Please note: All products are "FOR RESEARCH USE ONLY. NOT FOR USE IN DIAGNOSTIC PROCEDURES"

Our Abpromise to you: Quality guaranteed and expert technical support

- Replacement or refund for products not performing as stated on the datasheet
- Valid for 12 months from date of delivery
- Response to your inquiry within 24 hours
- We provide support in Chinese, English, French, German, Japanese and Spanish
- Extensive multi-media technical resources to help you
- We investigate all quality concerns to ensure our products perform to the highest standards

If the product does not perform as described on this datasheet, we will offer a refund or replacement. For full details of the Abpromise, please visit <https://www.abcam.com/abpromise> or contact our technical team.

Terms and conditions

- Guarantee only valid for products bought direct from Abcam or one of our authorized distributors