


Anti-PAR1/Thrombin Receptor antibody ab32611

[1 Abreviews](#) [13 References](#) [2 Images](#)

Overview

Product name	Anti-PAR1/Thrombin Receptor antibody
Description	Rabbit polyclonal to PAR1/Thrombin Receptor
Host species	Rabbit
Specificity	From Mar 2024, QC testing of replenishment batches of this polyclonal changed. All tested and expected application and reactive species combinations are still covered by our Abcam product promise. However, we no longer test all applications. For more information on a specific batch, please contact our Scientific Support who will be happy to help. You may also be interested in our alternative recombinant antibody, ab233741 .
Tested applications	Suitable for: WB, IHC-P
Species reactivity	Reacts with: Human Predicted to work with: Baboon 
Immunogen	Synthetic peptide within Human PAR1/Thrombin Receptor aa 1-100. The exact sequence is proprietary. Database link: P25116 (Peptide available as ab65987)
Positive control	KNRK cells, Pancreatic tissue.
General notes	<p>This product is FOR RESEARCH USE ONLY. For commercial use, please contact partnerships@abcam.com.</p> <p>The Life Science industry has been in the grips of a reproducibility crisis for a number of years. Abcam is leading the way in addressing this with our range of recombinant monoclonal antibodies and knockout edited cell lines for gold-standard validation. Please check that this product meets your needs before purchasing.</p> <p>If you have any questions, special requirements or concerns, please send us an inquiry and/or contact our Support team ahead of purchase. Recommended alternatives for this product can be found below, along with publications, customer reviews and Q&As</p>

Properties

Form	Liquid
Storage instructions	Shipped at 4°C. Upon delivery aliquot and store at -20°C. Avoid freeze / thaw cycles.
Storage buffer	pH: 7.60

	Preservative: 0.1% Sodium azide
	Constituents: PBS, 1% BSA
Purity	Immunogen affinity purified
Clonality	Polyclonal
Isotype	IgG

Applications

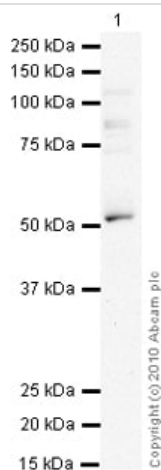
The Abpromise guarantee Our **Abpromise guarantee** covers the use of ab32611 in the following tested applications. The application notes include recommended starting dilutions; optimal dilutions/concentrations should be determined by the end user.

Application	Abreviews	Notes
WB		Use at an assay dependent concentration. Detects a band of approximately 52 kDa (predicted molecular weight: 47 kDa).
IHC-P		1/50. Perform heat mediated antigen retrieval before commencing with IHC staining protocol.

Target

Function	High affinity receptor for activated thrombin coupled to G proteins that stimulate phosphoinositide hydrolysis. May play a role in platelets activation and in vascular development.
Tissue specificity	Platelets and vascular endothelial cells.
Sequence similarities	Belongs to the G-protein coupled receptor 1 family.
Post-translational modifications	A proteolytic cleavage generates a new N-terminus that functions as a tethered ligand. Phosphorylated; probably mediating desensitization prior to the uncoupling and internalization of the receptor.
Cellular localization	Cell membrane.

Images



Western blot - Anti-PAR1/Thrombin Receptor antibody (ab32611)

Anti-PAR1/Thrombin Receptor antibody (ab32611) at 1 µg/ml + Human Platelet (Human adult normal cell line) Whole Cell Lysate at 10 µg

Secondary

Goat polyclonal to Rabbit IgG - H&L - Pre-Adsorbed (HRP) at 1/3000 dilution

Developed using the ECL technique.

Performed under reducing conditions.

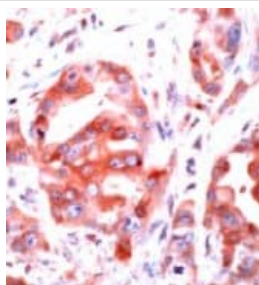
Predicted band size: 47 kDa

Observed band size: 52 kDa

Additional bands at: 87 kDa. We are unsure as to the identity of these extra bands.

Exposure time: 12 minutes

PAR1/Thrombin Receptor contains a number of potential glycosylation sites (SwissProt) which may explain its migration at a higher molecular weight than predicted.



Immunohistochemistry (Formalin/PFA-fixed paraffin-embedded sections) - Anti-PAR1/Thrombin Receptor antibody (ab32611)

This image shows human pancreas stained with ab32611.

Please note: All products are "FOR RESEARCH USE ONLY. NOT FOR USE IN DIAGNOSTIC PROCEDURES"

Our Abpromise to you: Quality guaranteed and expert technical support

- Replacement or refund for products not performing as stated on the datasheet
- Valid for 12 months from date of delivery
- Response to your inquiry within 24 hours

- We provide support in Chinese, English, French, German, Japanese and Spanish
- Extensive multi-media technical resources to help you
- We investigate all quality concerns to ensure our products perform to the highest standards

If the product does not perform as described on this datasheet, we will offer a refund or replacement. For full details of the Abpromise, please visit <https://www.abcam.com/abpromise> or contact our technical team.

Terms and conditions

- Guarantee only valid for products bought direct from Abcam or one of our authorized distributors