

Product datasheet

Anti-Parotid secretory protein antibody ab121028

1 Image

Overview

Product name	Anti-Parotid secretory protein antibody
Description	Goat polyclonal to Parotid secretory protein
Host species	Goat
Tested applications	Suitable for: ICC/IF
Species reactivity	Reacts with: Mouse
Immunogen	Synthetic peptide corresponding to Mouse Parotid secretory protein aa 100-200 (internal sequence).

 [Run BLAST with ExpASY](#)  [Run BLAST with NCBI](#)

Positive control ICC/IF: Mouse Submandibular gland cells

General notes

The Life Science industry has been in the grips of a reproducibility crisis for a number of years. Abcam is leading the way in addressing this with our range of recombinant monoclonal antibodies and knockout edited cell lines for gold-standard validation. Please check that this product meets your needs before purchasing.

If you have any questions, special requirements or concerns, please send us an inquiry and/or contact our Support team ahead of purchase. Recommended alternatives for this product can be found below, along with publications, customer reviews and Q&As

Properties

Form	Liquid
Storage instructions	Shipped at 4°C. Upon delivery aliquot. Store at -20°C or -80°C. Avoid freeze / thaw cycle.
Storage buffer	pH: 7.30 Preservative: 0.02% Sodium azide Constituents: 99.48% Tris buffered saline, 0.5% BSA
Purity	Immunogen affinity purified
Clonality	Polyclonal
Isotype	IgG

Applications

The Abpromise guarantee

Our **Abpromise guarantee** covers the use of ab121028 in the following tested applications.

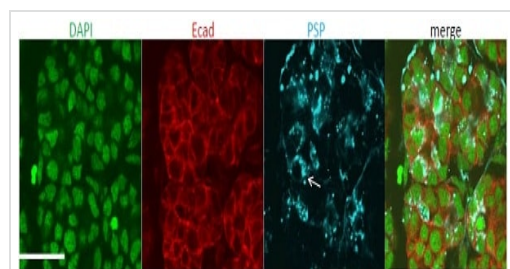
The application notes include recommended starting dilutions; optimal dilutions/concentrations should be determined by the end user.

Application	Abreviews	Notes
ICC/IF		Use a concentration of 4 µg/ml.

Target

Tissue specificity	Detected in submandibular gland.
Sequence similarities	Belongs to the BPI/LBP/Plunc superfamily. Plunc family.
Cellular localization	Secreted.

Images



Immunocytochemistry/immunofluorescence analysis of mouse submandibular gland cells labelling parotid secretory protein with ab121028 at 4 µg/mL (blue). Cells were fixed with 4% paraformaldehyde and permeabilized with 0.1% Triton X-100. Cells were counterstained with Ecad at 1/200 dilution (red). Nuclear DNA was labelled with DAPI (green).

Immunocytochemistry/ Immunofluorescence - Anti-Parotid secretory protein antibody (ab121028)

Please note: All products are "FOR RESEARCH USE ONLY. NOT FOR USE IN DIAGNOSTIC PROCEDURES"

Our Abpromise to you: Quality guaranteed and expert technical support

- Replacement or refund for products not performing as stated on the datasheet
- Valid for 12 months from date of delivery
- Response to your inquiry within 24 hours
- We provide support in Chinese, English, French, German, Japanese and Spanish
- Extensive multi-media technical resources to help you
- We investigate all quality concerns to ensure our products perform to the highest standards

If the product does not perform as described on this datasheet, we will offer a refund or replacement. For full details of the Abpromise, please visit <https://www.abcam.com/abpromise> or contact our technical team.

Terms and conditions

- Guarantee only valid for products bought direct from Abcam or one of our authorized distributors

