



Anti-PARP1 antibody ab218132

[1 References](#) [5 Images](#)

Overview

Product name	Anti-PARP1 antibody
Description	Rabbit polyclonal to PARP1
Host species	Rabbit
Tested applications	Suitable for: IHC-P, WB
Species reactivity	Reacts with: Mouse, Rat, Human
Immunogen	Synthetic peptide within Human PARP1 aa 200-300 conjugated to keyhole limpet haemocyanin. The exact immunogen sequence used to generate this antibody is proprietary information. If additional detail on the immunogen is needed to determine the suitability of the antibody for your needs, please contact our Scientific Support team to discuss your requirements. Database link: P09874
	 Run BLAST with  Run BLAST with
Positive control	Rat and mouse brain tissues. Rat brain lysates; HeLa and Raji cell lysates.
General notes	<p>The Life Science industry has been in the grips of a reproducibility crisis for a number of years. Abcam is leading the way in addressing this with our range of recombinant monoclonal antibodies and knockout edited cell lines for gold-standard validation. Please check that this product meets your needs before purchasing.</p> <p>If you have any questions, special requirements or concerns, please send us an inquiry and/or contact our Support team ahead of purchase. Recommended alternatives for this product can be found below, along with publications, customer reviews and Q&As</p>

Properties

Form	Liquid
Storage instructions	Shipped at 4°C. Store at +4°C short term (1-2 weeks). Upon delivery aliquot. Store at -20°C long term. Avoid freeze / thaw cycle.
Storage buffer	pH: 7.40 Preservative: 0.02% Proclin 300 Constituents: 50% Glycerol (glycerin, glycerine), 1% BSA, 48.98% TBS, 1X
Purity	Protein A purified
Clonality	Polyclonal
Isotype	IgG

Applications

The Abpromise guarantee

Our **Abpromise guarantee** covers the use of ab218132 in the following tested applications.

The application notes include recommended starting dilutions; optimal dilutions/concentrations should be determined by the end user.

Application	Abreviews	Notes
IHC-P		1/100 - 1/500. Perform heat mediated antigen retrieval with citrate buffer pH 6 before commencing with IHC staining protocol. When using a fluorescent probe the recommended dilution is 1/50 – 1/200.
WB		1/100 - 1/1000. Predicted molecular weight: 113 kDa.

Target

Function

Involved in the base excision repair (BER) pathway, by catalyzing the poly(ADP-ribosyl)ation of a limited number of acceptor proteins involved in chromatin architecture and in DNA metabolism. This modification follows DNA damages and appears as an obligatory step in a detection/signaling pathway leading to the reparation of DNA strand breaks. Mediates the poly(ADP-ribosyl)ation of APLF and CHFR. Positively regulates the transcription of MTUS1 and negatively regulates the transcription of MTUS2/TIP150.

Sequence similarities

Contains 1 BRCT domain.
Contains 1 PARP alpha-helical domain.
Contains 1 PARP catalytic domain.
Contains 2 PARP-type zinc fingers.

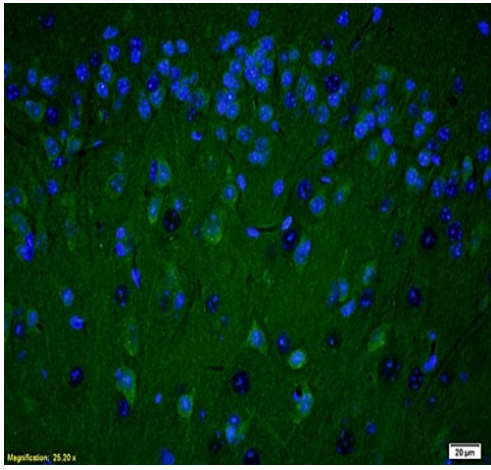
Post-translational modifications

Phosphorylated by PRKDC. Phosphorylated upon DNA damage, probably by ATM or ATR. Poly-ADP-ribosylated by PARP2. Poly-ADP-ribosylation mediates the recruitment of CHD1L to DNA damage sites.
S-nitrosylated, leading to inhibit transcription regulation activity.

Cellular localization

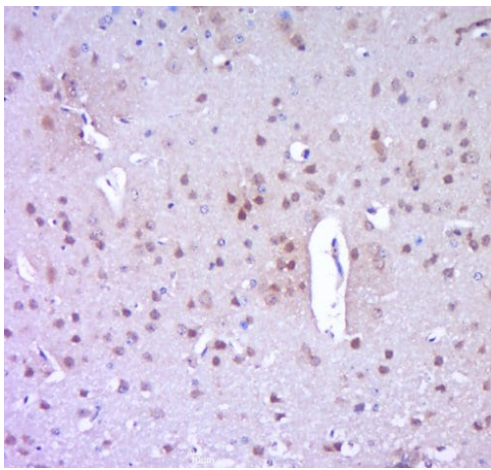
Nucleus.

Images



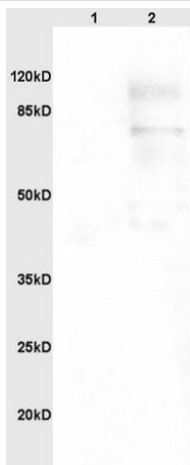
Immunohistochemistry (Formalin/PFA-fixed paraffin-embedded sections) - Anti-PARP1 antibody (ab218132)

Immunohistochemical analysis of formalin-fixed paraffin-embedded rat brain tissue, labeling PARP1 using ab218132 at a 1/200 dilution, followed by conjugation to the secondary antibody goat anti-rabbit IgG, FITC-conjugated at a 1/200 dilution and DAPI.



Immunohistochemistry (Formalin/PFA-fixed paraffin-embedded sections) - Anti-PARP1 antibody (ab218132)

Immunohistochemical analysis of formalin-fixed paraffin-embedded mouse brain tissue, labeling PARP1 using ab218132 at a 1/400 dilution, followed by conjugation to the secondary antibody and DAB staining.



Western blot - Anti-PARP1 antibody (ab218132)

All lanes : Anti-PARP1 antibody (ab218132) at 1/200 dilution

Lane 1 : Human colon carcinoma lysates

Lane 2 : rat brain lysates

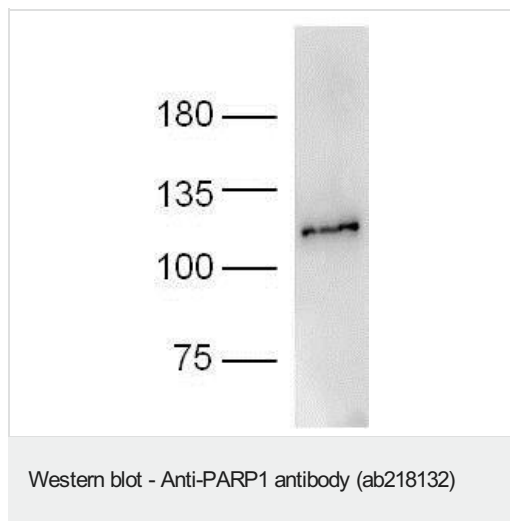
Secondary

All lanes : goat anti-rabbit IgG antibody (H+L) HRP-conjugated at 1/3000 dilution

Developed using the ECL technique.

Predicted band size: 113 kDa

Observed band size: 112 kDa



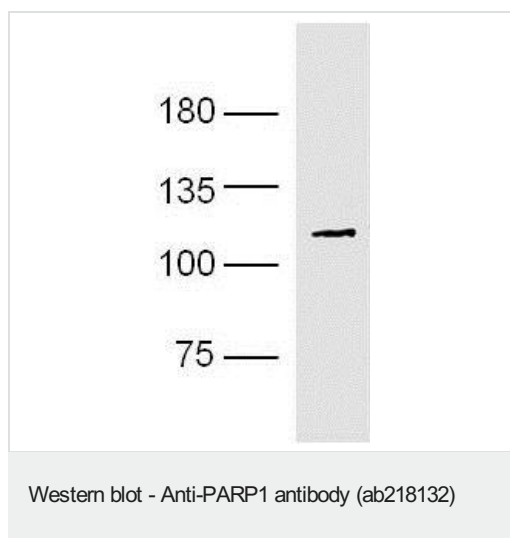
Anti-PARP1 antibody (ab218132) at 1/300 dilution + HeLa lysates

Secondary

goat anti-rabbit IgG antibody (H+L) HRP-conjugated at 1/5000 dilution

Developed using the ECL technique.

Predicted band size: 113 kDa



Anti-PARP1 antibody (ab218132) at 1/300 dilution + Human Raji lysates

Secondary

goat anti-rabbit IgG antibody (H+L) HRP-conjugated at 1/5000 dilution

Developed using the ECL technique.

Predicted band size: 113 kDa

Please note: All products are "FOR RESEARCH USE ONLY. NOT FOR USE IN DIAGNOSTIC PROCEDURES"

Our Abpromise to you: Quality guaranteed and expert technical support

- Replacement or refund for products not performing as stated on the datasheet
- Valid for 12 months from date of delivery
- Response to your inquiry within 24 hours
- We provide support in Chinese, English, French, German, Japanese and Spanish
- Extensive multi-media technical resources to help you
- We investigate all quality concerns to ensure our products perform to the highest standards

If the product does not perform as described on this datasheet, we will offer a refund or replacement. For full details of the Abpromise, please visit <https://www.abcam.com/abpromise> or contact our technical team.

Terms and conditions

- Guarantee only valid for products bought direct from Abcam or one of our authorized distributors