

## Product datasheet

### Anti-Paxillin antibody [M107] ab23510

KO VALIDATED

[4 References](#) [2 Images](#)

#### Overview

Product name	Anti-Paxillin antibody [M107]
Description	Mouse monoclonal [M107] to Paxillin
Host species	Mouse
Tested applications	<b>Suitable for:</b> WB
Species reactivity	<b>Reacts with:</b> Human
Immunogen	Recombinant full length protein (Human).
Positive control	A431 cell lysate.
General notes	<p>The Life Science industry has been in the grips of a reproducibility crisis for a number of years. Abcam is leading the way in addressing this with our range of recombinant monoclonal antibodies and knockout edited cell lines for gold-standard validation. Please check that this product meets your needs before purchasing.</p> <p>If you have any questions, special requirements or concerns, please send us an inquiry and/or contact our Support team ahead of purchase. Recommended alternatives for this product can be found below, along with publications, customer reviews and Q&amp;As</p>

#### Properties

Form	Liquid
Storage instructions	Shipped at 4°C. Store at -20°C. Stable for 12 months at -20°C.
Storage buffer	Preservative: 0.05% Sodium azide Constituents: PBS, 50% Glycerol, 0.1% BSA
Purity	Protein A purified
Clonality	Monoclonal
Clone number	M107
Isotype	IgG1

#### Applications

## The Abpromise guarantee

Our **Abpromise guarantee** covers the use of ab23510 in the following tested applications.

The application notes include recommended starting dilutions; optimal dilutions/concentrations should be determined by the end user.

Application	Abreviews	Notes
WB		1/1000. Detects a band of approximately 68 kDa (predicted molecular weight: 65 kDa).

## Target

### Function

Cytoskeletal protein involved in actin-membrane attachment at sites of cell adhesion to the extracellular matrix (focal adhesion).

### Sequence similarities

Belongs to the paxillin family.  
Contains 4 LIM zinc-binding domains.

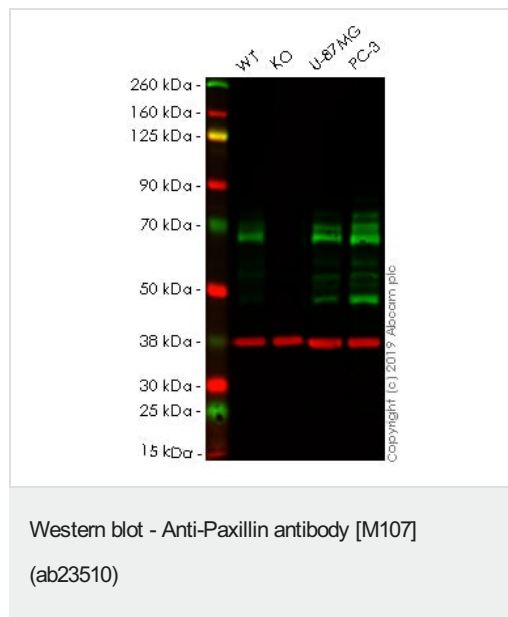
### Post-translational modifications

Phosphorylated on tyrosine residues during integrin-mediated cell adhesion, embryonic development, fibroblast transformation and following stimulation of cells by mitogens.

### Cellular localization

Cytoplasm > cytoskeleton. Cell junction > focal adhesion.

## Images



**All lanes :** Anti-Paxillin antibody [M107] (ab23510) at 1/1000 dilution

**Lane 1 :** Wild-type A-431 (Human epidermoid carcinoma cell line) whole cell lysate

**Lane 2 :** PXN knockout A-431 (Human epidermoid carcinoma cell line) whole cell lysate

**Lane 3 :** U-87 MG (Human glioblastoma-astrocytoma epithelial cell line) whole cell lysate

**Lane 4 :** PC3 (Human prostate adenocarcinoma cell line) whole cell lysate

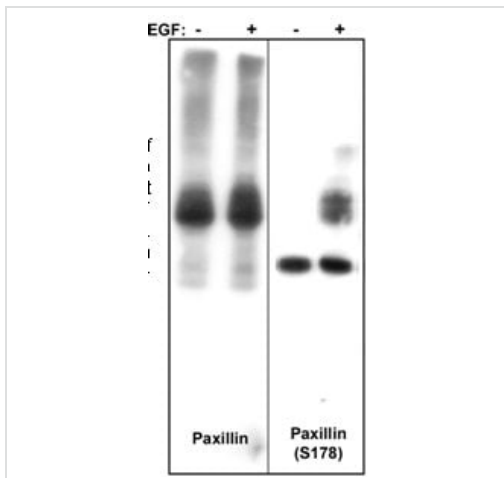
Lysates/proteins at 20 µg per lane.

Performed under reducing conditions.

**Predicted band size:** 65 kDa

**Lanes 1 - 4:** Merged signal (red and green). Green - ab23510 observed at 65 kDa. Red - loading control, **ab181602**, observed at 37 kDa.

ab23510 was shown to recognize PXN in wild-type A431 cells as signal was lost at the expected MW in PXN knockout cells. Additional cross-reactive bands were observed in the wild-type and knockout cells. Wild-type and PXN knockout samples were subjected to SDS-PAGE. Ab23510 and **ab181602** (Rabbit anti-GAPDH loading control) were incubated overnight at 4°C at 1/1000 dilution and 1/20000 dilution respectively. Blots were developed with Goat anti-Mouse IgG H&L (IRDye® 800CW) preabsorbed **ab216772** and Goat anti-Rabbit IgG H&L (IRDye® 680RD) preabsorbed **ab216777** secondary antibodies at 1/20000 dilution for 1 hour at room temperature before imaging.



Western blot - Anti-Paxillin antibody [M107]  
(ab23510)

**Lanes 1-2 :** Anti-Paxillin antibody [M107] (ab23510)

**Lanes 3-4 :** Anti-Paxillin (Ser178) antibody

**Lanes 1 & 3 :** A431 cells (20 ug/lane) serum starved overnight

**Lanes 2 & 4 :** A431 cells (20 ug/lane) serum treated with EGF (100 ng/ml) for 5 min.

**Predicted band size:** 65 kDa

Membrane was incubated with diluted antibody in 5% non-fat milk, PBS, 0.04% Tween20 for 1hour at room temperature.

**Please note:** All products are "FOR RESEARCH USE ONLY. NOT FOR USE IN DIAGNOSTIC PROCEDURES"

### Our Abpromise to you: Quality guaranteed and expert technical support

- Replacement or refund for products not performing as stated on the datasheet
- Valid for 12 months from date of delivery
- Response to your inquiry within 24 hours
- We provide support in Chinese, English, French, German, Japanese and Spanish
- Extensive multi-media technical resources to help you
- We investigate all quality concerns to ensure our products perform to the highest standards

If the product does not perform as described on this datasheet, we will offer a refund or replacement. For full details of the Abpromise, please visit <https://www.abcam.com/abpromise> or contact our technical team.

### Terms and conditions

- Guarantee only valid for products bought direct from Abcam or one of our authorized distributors