



## Product datasheet

### Anti-Paxillin (phospho Y118) antibody ab75740

[4 References](#) [2 Images](#)

#### Overview

<b>Product name</b>	Anti-Paxillin (phospho Y118) antibody
<b>Description</b>	Rabbit polyclonal to Paxillin (phospho Y118)
<b>Host species</b>	Rabbit
<b>Tested applications</b>	<b>Suitable for:</b> WB, IHC-P
<b>Species reactivity</b>	<b>Reacts with:</b> Human
<b>Immunogen</b>	Synthetic peptide corresponding to Human Paxillin (phospho Y118).  <a href="#">Run BLAST with ExPASy</a>  <a href="#">Run BLAST with NCBI</a>
<b>Positive control</b>	Human breast carcinoma tissue. Extracts from HeLa cells treated with EGF.
<b>General notes</b>	<p>The Life Science industry has been in the grips of a reproducibility crisis for a number of years. Abcam is leading the way in addressing this with our range of recombinant monoclonal antibodies and knockout edited cell lines for gold-standard validation. Please check that this product meets your needs before purchasing.</p> <p>If you have any questions, special requirements or concerns, please send us an inquiry and/or contact our Support team ahead of purchase. Recommended alternatives for this product can be found below, along with publications, customer reviews and Q&amp;As</p>

#### Properties

<b>Form</b>	Liquid
<b>Storage instructions</b>	Shipped at 4°C. Store at -20°C. Stable for 12 months at -20°C.
<b>Storage buffer</b>	<p>pH: 7.40</p> <p>Preservative: 0.02% Sodium azide</p> <p>Constituents: 50% Glycerol (glycerin, glycerine), 0.87% Sodium chloride, PBS</p> <p>Without Mg<sup>2+</sup> and Ca<sup>2+</sup></p>
<b>Purity</b>	Immunogen affinity purified
<b>Purification notes</b>	ab75740 was affinity-purified from rabbit antiserum by affinity-chromatography using epitope-specific phosphopeptide. The antibody against non-phosphopeptide was removed by chromatography using non-phosphopeptide corresponding to the phosphorylation site.
<b>Clonality</b>	Polyclonal
<b>Isotype</b>	IgG

## Applications

### The Abpromise guarantee

Our **Abpromise guarantee** covers the use of ab75740 in the following tested applications.

The application notes include recommended starting dilutions; optimal dilutions/concentrations should be determined by the end user.

Application	Abreviews	Notes
WB		1/500 - 1/1000. Detects a band of approximately 64 kDa (predicted molecular weight: 64 kDa).
IHC-P		1/50 - 1/100.

## Target

### Function

Cytoskeletal protein involved in actin-membrane attachment at sites of cell adhesion to the extracellular matrix (focal adhesion).

### Sequence similarities

Belongs to the paxillin family.  
Contains 4 LIM zinc-binding domains.

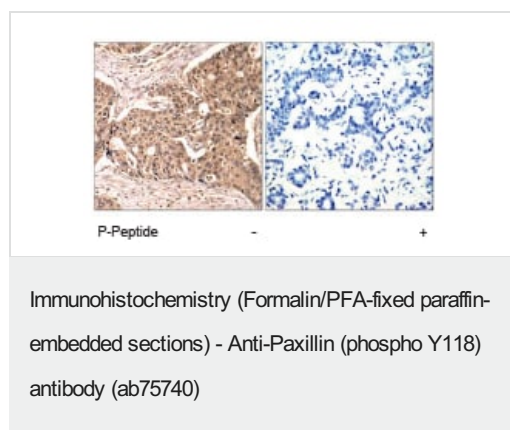
### Post-translational modifications

Phosphorylated on tyrosine residues during integrin-mediated cell adhesion, embryonic development, fibroblast transformation and following stimulation of cells by mitogens.

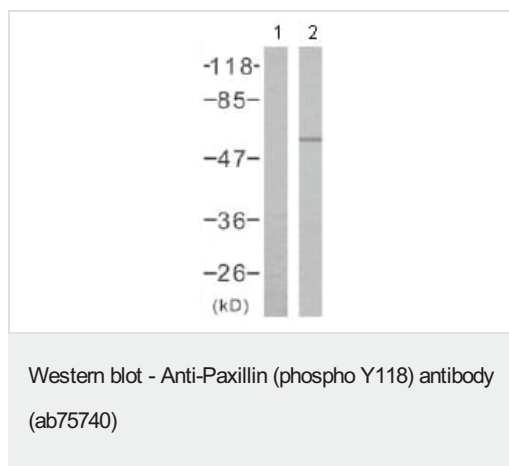
### Cellular localization

Cytoplasm > cytoskeleton. Cell junction > focal adhesion.

## Images



ab75740 at 1/50 dilution staining Paxillin in human breast carcinoma by Immunohistochemistry using paraffin-embedded tissue, in the absence or presence of the immunising phosphopeptide.



**All lanes :** Anti-Paxillin (phospho Y118) antibody (ab75740) at 1/500 dilution

**Lane 1 :** HeLa cell extract, untreated

**Lane 2 :** HeLa cell extract treated with EGF

**Predicted band size:** 64 kDa

**Observed band size:** 64 kDa

**Please note:** All products are "FOR RESEARCH USE ONLY. NOT FOR USE IN DIAGNOSTIC PROCEDURES"

### Our Abpromise to you: Quality guaranteed and expert technical support

- Replacement or refund for products not performing as stated on the datasheet
- Valid for 12 months from date of delivery
- Response to your inquiry within 24 hours
- We provide support in Chinese, English, French, German, Japanese and Spanish
- Extensive multi-media technical resources to help you
- We investigate all quality concerns to ensure our products perform to the highest standards

If the product does not perform as described on this datasheet, we will offer a refund or replacement. For full details of the Abpromise, please visit <https://www.abcam.com/abpromise> or contact our technical team.

### Terms and conditions

- Guarantee only valid for products bought direct from Abcam or one of our authorized distributors