


Anti-PBK/SPK antibody ab226923

[1 References](#) [4 Images](#)

Overview

Product name	Anti-PBK/SPK antibody
Description	Rabbit polyclonal to PBK/SPK
Host species	Rabbit
Tested applications	Suitable for: IP, ICC/IF, WB
Species reactivity	Reacts with: Human Predicted to work with: Mouse, Rat, Cow, Pig, Chimpanzee 
Immunogen	Recombinant fragment within Human PBK/SPK (internal sequence). The exact sequence is proprietary. Database link: Q96KB5
Positive control	WB: HEK-293T, A431, HeLa, HepG2, U-87 MG, SK-N-SH, IMR32 and SK-N-AS whole cell extracts. ICC/IF: HeLa cells. IP: A431 whole cell extract.
General notes	<p>The Life Science industry has been in the grips of a reproducibility crisis for a number of years. Abcam is leading the way in addressing this with our range of recombinant monoclonal antibodies and knockout edited cell lines for gold-standard validation. Please check that this product meets your needs before purchasing.</p> <p>If you have any questions, special requirements or concerns, please send us an inquiry and/or contact our Support team ahead of purchase. Recommended alternatives for this product can be found below, along with publications, customer reviews and Q&As</p>

Properties

Form	Liquid
Storage instructions	Shipped at 4°C. Store at +4°C short term (1-2 weeks). Upon delivery aliquot. Store at -20°C long term. Avoid freeze / thaw cycle.
Storage buffer	pH: 7.00 Preservative: 0.025% Proclin 300 Constituents: 79% PBS, 20% Glycerol (glycerin, glycerine)
Purity	Immunogen affinity purified
Clonality	Polyclonal
Isotype	IgG

Applications

The Abpromise guarantee

Our **Abpromise guarantee** covers the use of ab226923 in the following tested applications.

The application notes include recommended starting dilutions; optimal dilutions/concentrations should be determined by the end user.

Application	Abreviews	Notes
IP		1/100 - 1/1000.
ICC/IF		1/100 - 1/1000.
WB		1/500 - 1/3000. Predicted molecular weight: 36,37 kDa.

Target

Function

Phosphorylates MAP kinase p38. Seems to be active only in mitosis. May also play a role in the activation of lymphoid cells. When phosphorylated, forms a complex with TP53, leading to TP53 destabilization and attenuation of G2/M checkpoint during doxorubicin-induced DNA damage.

Tissue specificity

Expressed in the testis and placenta. In the testis, restrictedly expressed in outer cell layer of seminiferous tubules.

Sequence similarities

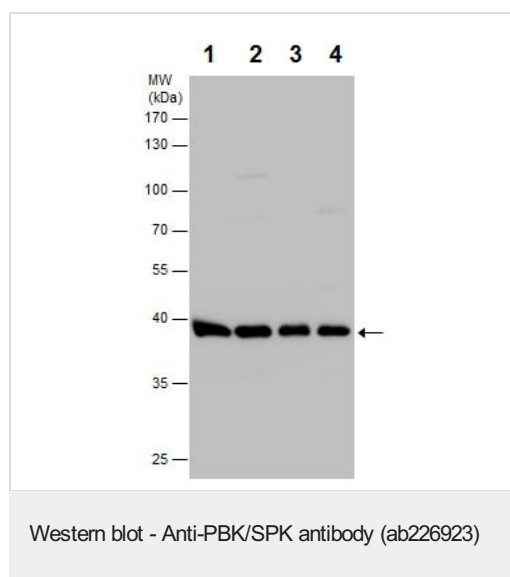
Belongs to the protein kinase superfamily. Ser/Thr protein kinase family. MAP kinase kinase subfamily.

Contains 1 protein kinase domain.

Post-translational modifications

Phosphorylated; in a cell-cycle dependent manner at mitosis.

Images



All lanes : Anti-PBK/SPK antibody (ab226923) at 1/1000 dilution

Lane 1 : HEK-293T (human epithelial cell line from embryonic kidney transformed with large T antigen) whole cell extract

Lane 2 : A431 (human epidermoid carcinoma cell line) whole cell extract

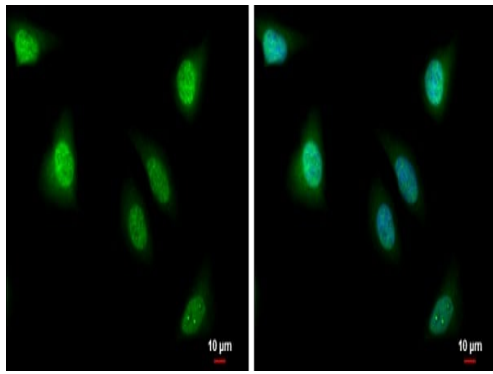
Lane 3 : HeLa (human epithelial cell line from cervix adenocarcinoma) whole cell extract

Lane 4 : HepG2 (human liver hepatocellular carcinoma cell line) whole cell extract

Lysates/proteins at 30 µg per lane.

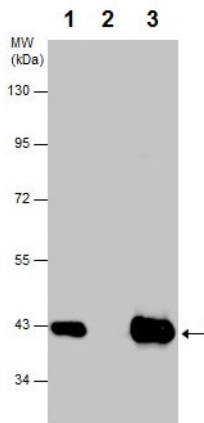
Predicted band size: 36,37 kDa

10% SDS-PAGE gel.



Immunocytochemistry/ Immunofluorescence - Anti-PBK/SPK antibody (ab226923)

4% paraformaldehyde-fixed HeLa (human epithelial cell line from cervix adenocarcinoma) cells labeling PBK/SPK (green) using ab226923 at 1/500 dilution in ICC/IF. Nuclear counterstained with Hoechst 33342 (blue).



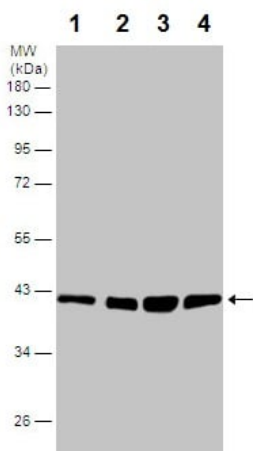
Immunoprecipitation - Anti-PBK/SPK antibody (ab226923)

PBK/SPK was immunoprecipitated from A431 (human epidermoid carcinoma cell line) whole cell extract with 5 μg ab226923. Western blot was performed from the immunoprecipitate using ab226923. Anti-Rabbit IgG was used as a secondary antibody.

Lane 1: A431 whole cell extract (Input).

Lane 2: Control IgG IP in A431 whole cell extract.

Lane 3: ab226923 IP in A431 whole cell extract.



Western blot - Anti-PBK/SPK antibody (ab226923)

All lanes : Anti-PBK/SPK antibody (ab226923) at 1/1000 dilution

Lane 1 : U-87 MG (human glioblastoma-astrocytoma epithelial cell line) whole cell extract

Lane 2 : SK-N-SH (human neuroblastoma cell line) whole cell extract

Lane 3 : IMR32 whole cell extract

Lane 4 : SK-N-AS whole cell extract

Lysates/proteins at 30 μg per lane.

Predicted band size: 36,37 kDa

10% SDS-PAGE gel.

Please note: All products are "FOR RESEARCH USE ONLY. NOT FOR USE IN DIAGNOSTIC PROCEDURES"

Our Abpromise to you: Quality guaranteed and expert technical support

- Replacement or refund for products not performing as stated on the datasheet
- Valid for 12 months from date of delivery
- Response to your inquiry within 24 hours

- We provide support in Chinese, English, French, German, Japanese and Spanish
- Extensive multi-media technical resources to help you
- We investigate all quality concerns to ensure our products perform to the highest standards

If the product does not perform as described on this datasheet, we will offer a refund or replacement. For full details of the Abpromise, please visit <https://www.abcam.com/abpromise> or contact our technical team.

Terms and conditions

- Guarantee only valid for products bought direct from Abcam or one of our authorized distributors