




Product datasheet

Anti-PC1/3 antibody ab191452

3 Images

Overview

Product name	Anti-PC1/3 antibody
Description	Rabbit polyclonal to PC1/3
Host species	Rabbit
Tested applications	Suitable for: WB, IHC-P
Species reactivity	Reacts with: Rat, Human Predicted to work with: Mouse 
Immunogen	Synthetic peptide corresponding to Human PC1/3 aa 700 to the C-terminus (C terminal). Database link: P29120  Run BLAST with  Run BLAST with
Positive control	Rat Liver Lysate, Rat Thymus Lysate, A549 Cell Lysate, HELA Cell Lysate, COLO320 Cell Lysate & PANC Cell Lysate, Rat Intestine Tissue
General notes	<p>The Life Science industry has been in the grips of a reproducibility crisis for a number of years. Abcam is leading the way in addressing this with our range of recombinant monoclonal antibodies and knockout edited cell lines for gold-standard validation. Please check that this product meets your needs before purchasing.</p> <p>If you have any questions, special requirements or concerns, please send us an inquiry and/or contact our Support team ahead of purchase. Recommended alternatives for this product can be found below, along with publications, customer reviews and Q&As</p>

Properties

Form	Liquid
Storage instructions	Shipped at 4°C. Store at +4°C short term (1-2 weeks). Upon delivery aliquot. Store at -20°C long term. Avoid freeze / thaw cycle.
Storage buffer	Preservatives: 0.025% Thimerosal (merthiolate), 0.025% Sodium azide Constituents: 2.5% BSA, 0.45% Sodium chloride, 0.1% Dibasic monohydrogen sodium phosphate
Purity	Immunogen affinity purified
Clonality	Polyclonal
Isotype	IgG

Applications

The Abpromise guarantee

Our **Abpromise guarantee** covers the use of ab191452 in the following tested applications.

The application notes include recommended starting dilutions; optimal dilutions/concentrations should be determined by the end user.

Application	Abreviews	Notes
WB		Use a concentration of 0.1 - 0.5 µg/ml. Predicted molecular weight: 84 kDa.
IHC-P		Use a concentration of 0.5 - 1 µg/ml. Perform heat mediated antigen retrieval with citrate buffer pH 6 before commencing with IHC staining protocol.

Target

Function

Involved in the processing of hormone and other protein precursors at sites comprised of pairs of basic amino acid residues. Substrates include POMC, renin, enkephalin, dynorphin, somatostatin and insulin.

Involvement in disease

Defects in PCSK1 are the cause of proprotein convertase 1 deficiency (PC1 deficiency) [MIM:600955]. PC1 deficiency is characterized by obesity, hypogonadism, hypoadrenalism, reactive hypoglycemia as well as marked small-intestinal absorptive dysfunction. It is due to impaired processing of prohormones.

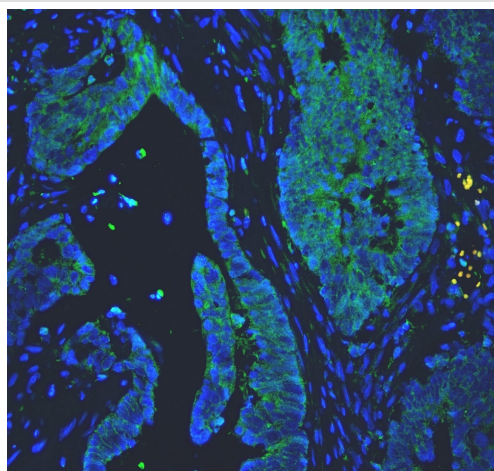
Sequence similarities

Belongs to the peptidase S8 family. Furin subfamily.

Cellular localization

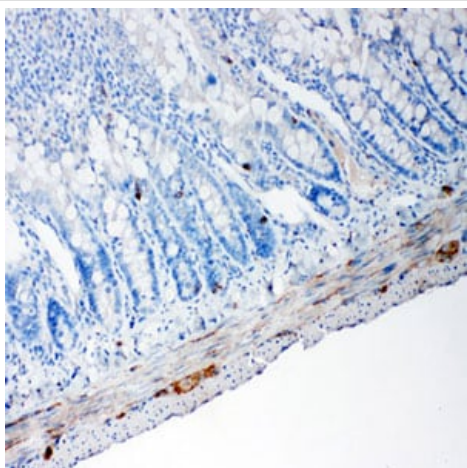
Cytoplasmic vesicle > secretory vesicle. Localized in the secretion granules.

Images



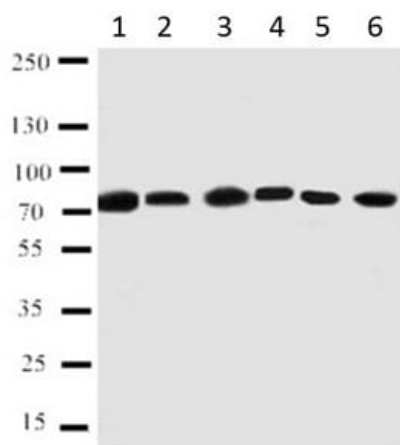
Immunohistochemistry (Formalin/PFA-fixed paraffin-embedded sections) - Anti-PC1/3 antibody (ab191452)

Immunohistochemistry (Formalin/PFA-fixed paraffin-embedded sections) analysis of PC1/3 using ab191452 in human colon cancer tissues. Heat mediated antigen retrieval was performed in citrate buffer (pH6, epitope retrieval solution) for 20 mins. The tissue section was blocked with 10% goat serum. The tissue section was then incubated with 1µg/mL ab191452 overnight at 4°C. DyLight®488 Conjugated Avidin was used and incubated for 30 minutes at 37°C. The section was counterstained with DAPI. Visualize using a fluorescence microscope and filter sets appropriate for the label used.



Immunohistochemistry (Formalin/PFA-fixed paraffin-embedded sections) - Anti-PC1/3 antibody (ab191452)

Immunohistochemical analysis of formalin-fixed paraffin-embedded Rat Intestine tissue labeling PC1/3 with ab191452 at 1 µg/ml.



Western blot - Anti-PC1/3 antibody (ab191452)

All lanes : Anti-PC1/3 antibody (ab191452) at 0.5 µg/ml

Lane 1 : Rat Liver Tissue Lysate

Lane 2 : Rat Thymus Tissue Lysate

Lane 3 : A549 cell lysate

Lane 4 : HELA cell lysate

Lane 5 : COLO320 cell lysate

Lane 6 : PANC cell lysate

Predicted band size: 84 kDa

Please note: All products are "FOR RESEARCH USE ONLY. NOT FOR USE IN DIAGNOSTIC PROCEDURES"

Our Abpromise to you: Quality guaranteed and expert technical support

- Replacement or refund for products not performing as stated on the datasheet
- Valid for 12 months from date of delivery
- Response to your inquiry within 24 hours
- We provide support in Chinese, English, French, German, Japanese and Spanish
- Extensive multi-media technical resources to help you
- We investigate all quality concerns to ensure our products perform to the highest standards

If the product does not perform as described on this datasheet, we will offer a refund or replacement. For full details of the Abpromise, please visit <https://www.abcam.com/abpromise> or contact our technical team.

Terms and conditions

- Guarantee only valid for products bought direct from Abcam or one of our authorized distributors