

Anti-PCDH11X antibody [EPR16916] ab203520

Recombinant RabMAb

3 Images

Overview

Product name	Anti-PCDH11X antibody [EPR16916]
Description	Rabbit monoclonal [EPR16916] to PCDH11X
Host species	Rabbit
Tested applications	Suitable for: WB
Species reactivity	Reacts with: Mouse, Human
Immunogen	Synthetic peptide. This information is proprietary to Abcam and/or its suppliers.
Positive control	WB: human hippocampus, heart lysates, mouse hippocampus, cerebellum, thalamus lysates
General notes	<p>This product is a recombinant monoclonal antibody, which offers several advantages including:</p> <ul style="list-style-type: none"> - High batch-to-batch consistency and reproducibility - Improved sensitivity and specificity - Long-term security of supply - Animal-free production <p>For more information see here.</p> <p>Our RabMAb® technology is a patented hybridoma-based technology for making rabbit monoclonal antibodies. For details on our patents, please refer to RabMAb® patents.</p>

Properties

Form	Liquid
Storage instructions	Shipped at 4°C. Store at +4°C short term (1-2 weeks). Upon delivery aliquot. Store at -20°C long term. Avoid freeze / thaw cycle.
Storage buffer	<p>pH: 7.2</p> <p>Preservative: 0.01% Sodium azide</p> <p>Constituents: 59% PBS, 40% Glycerol (glycerin, glycerine), 0.05% BSA</p>
Purity	Protein A purified
Clonality	Monoclonal
Clone number	EPR16916
Isotype	IgG

Applications

The Abpromise guarantee

Our **Abpromise guarantee** covers the use of ab203520 in the following tested applications.

The application notes include recommended starting dilutions; optimal dilutions/concentrations should be determined by the end user.

Application	Abreviews	Notes
WB		1/1000. Detects a band of approximately 148 kDa (predicted molecular weight: 148 kDa).

Target

Function

Potential calcium-dependent cell-adhesion protein.

Tissue specificity

Expressed strongly in fetal brain and brain (cortex, amygdala, thalamus, substantia nigra, hippocampus, caudate nucleus and corpus callosum). Expressed at low level in testis.

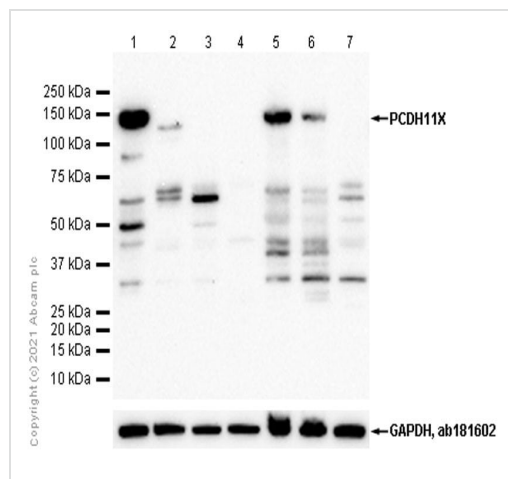
Sequence similarities

Contains 7 cadherin domains.

Cellular localization

Cell membrane.

Images



Western blot - Anti-PCDH11X antibody [EPR16916] (ab203520)

All lanes : Anti-PCDH11X antibody [EPR16916] (ab203520) at 1/1000 dilution

Lane 1 : Human Hippocampus lysate

Lane 2 : Human heart lysate

Lane 3 : Human kidney lysate

Lane 4 : Human spleen lysate

Lane 5 : Mouse hippocampus lysate

Lane 6 : Mouse cerebellum lysate

Lane 7 : Mouse heart lysate

Lysates/proteins at 20 µg per lane.

Secondary

All lanes : Goat Anti-Rabbit IgG (HRP) with minimal cross-reactivity with human IgG at 1/2000 dilution

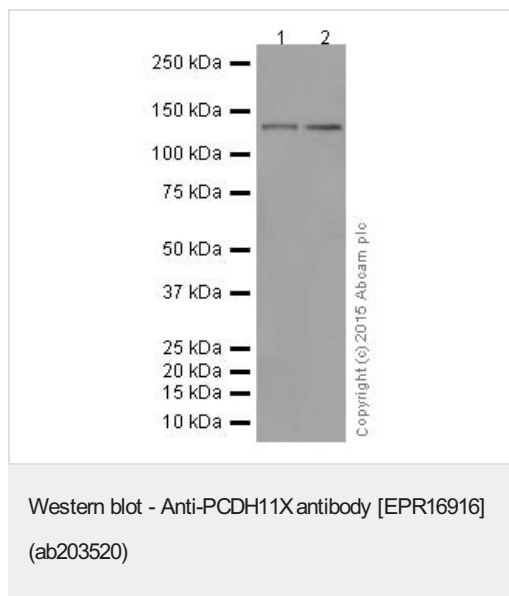
Predicted band size: 148 kDa

Observed band size: 148 kDa

Exposure time: 180 seconds

Blocking and diluting buffer:

5% NFDM/TBST



All lanes : Anti-PCDH11X antibody [EPR16916] (ab203520) at 1/1000 dilution

Lane 1 : Mouse thalamus lysate

Lane 2 : Mouse hippocampus lysate

Lysates/proteins at 10 µg per lane.

Secondary

All lanes : Goat Anti-Rabbit IgG H&L (HRP) ([ab97051](#)) at 1/50000 dilution





Predicted band size: 148 kDa

Observed band size: 148 kDa

Exposure time: 3 minutes

Blocking/Dilution buffer: 5% NFDM/TBST.

Why choose a recombinant antibody?

 <p>Research with confidence Consistent and reproducible results</p>	 <p>Long-term and scalable supply Recombinant technology</p>
 <p>Success from the first experiment Confirmed specificity</p>	 <p>Ethical standards compliant Animal-free production</p>

Anti-PCDH11X antibody [EPR16916] (ab203520)

Please note: All products are "FOR RESEARCH USE ONLY. NOT FOR USE IN DIAGNOSTIC PROCEDURES"

Our Abpromise to you: Quality guaranteed and expert technical support

- Replacement or refund for products not performing as stated on the datasheet

- Valid for 12 months from date of delivery
- Response to your inquiry within 24 hours
- We provide support in Chinese, English, French, German, Japanese and Spanish
- Extensive multi-media technical resources to help you
- We investigate all quality concerns to ensure our products perform to the highest standards

If the product does not perform as described on this datasheet, we will offer a refund or replacement. For full details of the Abpromise, please visit <https://www.abcam.com/abpromise> or contact our technical team.

Terms and conditions

- Guarantee only valid for products bought direct from Abcam or one of our authorized distributors