


## Product datasheet

# Anti-PCDH17 antibody ab128815

[2 References](#) [1 Image](#)

### Overview

---

|                            |   |
|----------------------------|---|
| <b>Product name</b>        | Anti-PCDH17 antibody  |
| <b>Description</b>         | Goat polyclonal to PCDH17   |
| <b>Host species</b>        | Goat  |
| <b>Tested applications</b> | <b>Suitable for:</b> WB   |
| <b>Species reactivity</b>  | <b>Reacts with:</b> Mouse<br><b>Predicted to work with:</b> Rat, Cow, Human, Pig, Chinese hamster    |
| <b>Immunogen</b>           | Synthetic peptide:<br>C-RVFADVHSRASRDS<br>, corresponding to C terminal amino acids 1098-1111 of Human PCDH17 (NP_001035519.1).<br><a href="#">Run BLAST with</a> <a href="#">Run BLAST with</a>  |
| <b>Positive control</b>    | Mouse fetal brain lysate  |
| <b>General notes</b>       | <p>The Life Science industry has been in the grips of a reproducibility crisis for a number of years. Abcam is leading the way in addressing this with our range of recombinant monoclonal antibodies and knockout edited cell lines for gold-standard validation. Please check that this product meets your needs before purchasing.</p> <p>If you have any questions, special requirements or concerns, please send us an inquiry and/or contact our Support team ahead of purchase. Recommended alternatives for this product can be found below, along with publications, customer reviews and Q&amp;As</p> |

### Properties

---

|                             |   |
|-----------------------------|---|
| <b>Form</b>                 | Liquid  |
| <b>Storage instructions</b> | Shipped at 4°C. Upon delivery aliquot and store at -20°C. Avoid repeated freeze / thaw cycles.  |
| <b>Storage buffer</b>       | pH: 7.30<br>Preservative: 0.02% Sodium azide<br>Constituents: 99% Tris buffered saline, 0.5% BSA                                      |
| <b>Purity</b>               | Immunogen affinity purified   |
| <b>Purification notes</b>   | Purified from goat serum by ammonium sulphate precipitation followed by antigen affinity chromatography using the immunizing peptide. |
| <b>Clonality</b>            | Polyclonal  |

Isotype

IgG

## Applications

### The Abpromise guarantee

Our **Abpromise guarantee** covers the use of ab128815 in the following tested applications.

The application notes include recommended starting dilutions; optimal dilutions/concentrations should be determined by the end user.

| Application | Abreviews | Notes   |
|-------------|-----------|---|
| WB          |           | Use a concentration of 0.1 - 0.3 µg/ml. Detects a band of approximately 150 kDa (predicted molecular weight: 126 kDa). 1 hour primary incubation is recommended for this product. |

## Target

### Function

Potential calcium-dependent cell-adhesion protein.

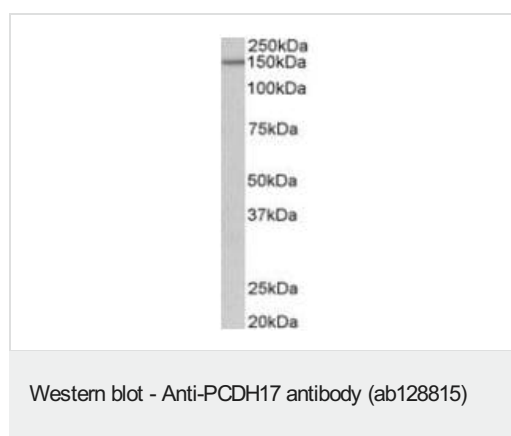
### Sequence similarities

Contains 6 cadherin domains.

### Cellular localization

Cell membrane.

## Images



Anti-PCDH17 antibody (ab128815) at 0.2 µg/ml + Mouse fetal brain lysate in RIPA buffer at 35 µg

Developed using the ECL technique.

**Predicted band size:** 126 kDa

**Observed band size:** 150 kDa

**Exposure time:** 1 hour

**Please note:** All products are "FOR RESEARCH USE ONLY. NOT FOR USE IN DIAGNOSTIC PROCEDURES"

## Our Abpromise to you: Quality guaranteed and expert technical support

- Replacement or refund for products not performing as stated on the datasheet
- Valid for 12 months from date of delivery
- Response to your inquiry within 24 hours
- We provide support in Chinese, English, French, German, Japanese and Spanish
- Extensive multi-media technical resources to help you
- We investigate all quality concerns to ensure our products perform to the highest standards

If the product does not perform as described on this datasheet, we will offer a refund or replacement. For full details of the Abpromise, please visit <https://www.abcam.com/abpromise> or contact our technical team.

### **Terms and conditions**

---

- Guarantee only valid for products bought direct from Abcam or one of our authorized distributors