


## Product datasheet

# Anti-PDCD5 antibody ab75430

[2 References](#) [3 Images](#)

### Overview

---

|                            |   |
|----------------------------|---|
| <b>Product name</b>        | Anti-PDCD5 antibody   |
| <b>Description</b>         | Rabbit polyclonal to PDCD5  |
| <b>Host species</b>        | Rabbit  |
| <b>Specificity</b>         | From Mar 2024, QC testing of replenishment batches of this polyclonal changed. All tested and expected application and reactive species combinations are still covered by our Abcam product promise. However, we no longer test all applications. For more information on a specific batch, please contact our Scientific Support who will be happy to help.  |
| <b>Tested applications</b> | <b>Suitable for:</b> WB, ICC/IF, IHC-P  |
| <b>Species reactivity</b>  | <b>Reacts with:</b> Human<br><b>Predicted to work with:</b> Mouse, Rat   |
| <b>Immunogen</b>           | Synthetic peptide corresponding to Human PDCD5 aa 1-100 conjugated to keyhole limpet haemocyanin.<br>(Peptide available as <a href="#">ab90255</a> )  |
| <b>Positive control</b>    | Recombinant Human PDCD5 protein ( <a href="#">ab78938</a> ) can be used as a positive control in WB. This antibody gave a positive signal in HEK293 whole cell lysate.  |
| <b>General notes</b>       | <p>The Life Science industry has been in the grips of a reproducibility crisis for a number of years. Abcam is leading the way in addressing this with our range of recombinant monoclonal antibodies and knockout edited cell lines for gold-standard validation. Please check that this product meets your needs before purchasing.</p> <p>If you have any questions, special requirements or concerns, please send us an inquiry and/or contact our Support team ahead of purchase. Recommended alternatives for this product can be found below, along with publications, customer reviews and Q&amp;As</p> |

### Properties

---

|                             |  |
|-----------------------------|--|
| <b>Form</b>                 | Liquid   |
| <b>Storage instructions</b> | Shipped at 4°C. Store at +4°C short term (1-2 weeks). Upon delivery aliquot. Store at -20°C or -80°C. Avoid freeze / thaw cycle. |
| <b>Storage buffer</b>       | pH: 7.40<br>Preservative: 0.02% Sodium azide<br>Constituent: PBS   |

Batches of this product that have a concentration < 1mg/ml may have BSA added as a stabilising agent. If you would like information about the formulation of a specific lot, please contact our scientific support team who will be happy to help.

|                  |                             |
|------------------|-----------------------------|
| <b>Purity</b>    | Immunogen affinity purified |
| <b>Clonality</b> | Polyclonal                  |
| <b>Isotype</b>   | IgG                         |

## Applications

---

**The Abpromise guarantee** Our **Abpromise guarantee** covers the use of ab75430 in the following tested applications. The application notes include recommended starting dilutions; optimal dilutions/concentrations should be determined by the end user.

| Application | Abreviews | Notes  |
|-------------|-----------|--|
| WB          |           | Use a concentration of 1 µg/ml. Detects a band of approximately 14 kDa (predicted molecular weight: 14 kDa). |
| ICC/IF      |           | Use a concentration of 5 µg/ml.  |
| IHC-P       |           | Use a concentration of 1 µg/ml.  |

## Target

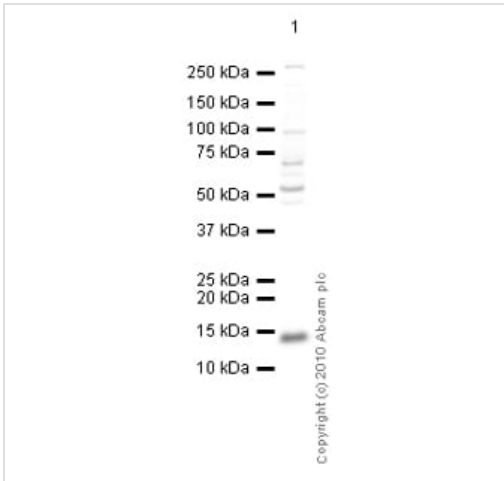
---

|                              |   |
|------------------------------|---|
| <b>Function</b>              | May function in the process of apoptosis.   |
| <b>Tissue specificity</b>    | Widely expressed. Highest levels in heart, testis, kidney, pituitary gland, adrenal gland and placenta. |
| <b>Sequence similarities</b> | Belongs to the PDCD5 family.  |
| <b>Developmental stage</b>   | Expression in fetal tissues is significantly lower than in adult tissues.                               |

---

## Images

---



Western blot - Anti-PDCD5 antibody (ab75430)

Anti-PDCD5 antibody (ab75430) at 1 µg/ml + HEK293 (Human embryonic kidney cell line) Whole Cell Lysate at 10 µg

**Secondary**

Goat polyclonal to Rabbit IgG - H&L - Pre-Adsorbed (HRP) at 1/3000 dilution

Developed using the ECL technique.

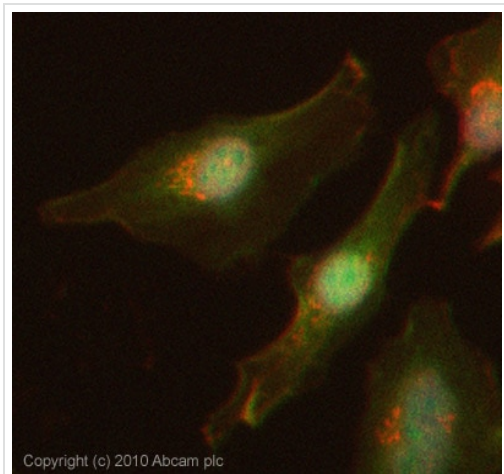
Performed under reducing conditions.

**Predicted band size:** 14 kDa

**Observed band size:** 14 kDa

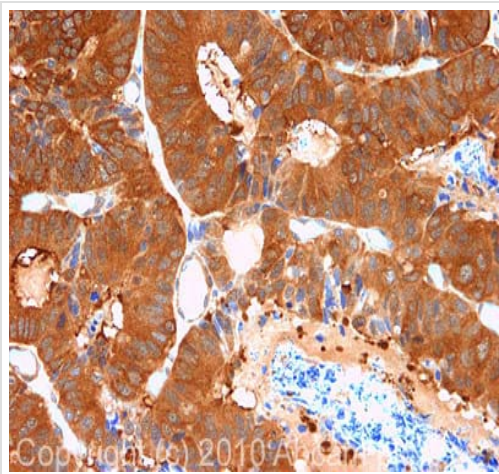
**Additional bands at:** 100 kDa, 52 kDa, 72 kDa. We are unsure as to the identity of these extra bands.

**Exposure time:** 30 seconds



Immunocytochemistry/ Immunofluorescence - Anti-PDCD5 antibody (ab75430)

ICC/IF image of ab75430 stained HeLa cells. The cells were 4% PFA fixed (10 min) and then incubated in 1%BSA / 10% normal Goat serum / 0.3M glycine in 0.1% PBS-Tween for 1h to permeabilise the cells and block non-specific protein-protein interactions. The cells were then incubated with the antibody (ab75430, 5µg/ml) overnight at +4°C. The secondary antibody (green) was Alexa Fluor® 488 Goat anti-Rabbit IgG (H+L) used at a 1/1000 dilution for 1h. Alexa Fluor® 594 WGA was used to label plasma membranes (red) at a 1/200 dilution for 1h. DAPI was used to stain the cell nuclei (blue) at a concentration of 1.43µM.



Immunohistochemistry (Formalin/PFA-fixed paraffin-embedded sections) - Anti-PDCD5 antibody (ab75430)

IHC image of ab75430 staining in Human Colon cancer formalin fixed paraffin embedded tissue section, performed on a Leica Bond™ system using the standard protocol F. The section was pre-treated using heat mediated antigen retrieval with sodium citrate buffer (pH6, epitope retrieval solution 1) for 20 mins. The section was then incubated with ab75430, 1µg/ml, for 15 mins at room temperature and detected using an HRP conjugated compact polymer system. DAB was used as the chromogen. The section was then counterstained with haematoxylin and mounted with DPX.

For other IHC staining systems (automated and non-automated) customers should optimize variable parameters such as antigen retrieval conditions, primary antibody concentration and antibody incubation times.

**Please note:** All products are "FOR RESEARCH USE ONLY. NOT FOR USE IN DIAGNOSTIC PROCEDURES"

### Our Abpromise to you: Quality guaranteed and expert technical support

---

- Replacement or refund for products not performing as stated on the datasheet
- Valid for 12 months from date of delivery
- Response to your inquiry within 24 hours
- We provide support in Chinese, English, French, German, Japanese and Spanish
- Extensive multi-media technical resources to help you
- We investigate all quality concerns to ensure our products perform to the highest standards

If the product does not perform as described on this datasheet, we will offer a refund or replacement. For full details of the Abpromise, please visit <https://www.abcam.com/abpromise> or contact our technical team.

### Terms and conditions

---

- Guarantee only valid for products bought direct from Abcam or one of our authorized distributors