




Product datasheet

Anti-PDE10A antibody - C-terminal ab151454

★★★★★ [1 Abreviews](#) [1 References](#) [3 Images](#)

Overview

Product name	Anti-PDE10A antibody - C-terminal
Description	Rabbit polyclonal to PDE10A - C-terminal
Host species	Rabbit
Tested applications	Suitable for: WB, IHC-P, ICC/IF
Species reactivity	Reacts with: Human Predicted to work with: Mouse, Rat 
Immunogen	Recombinant fragment corresponding to a region within C terminal end amino acids 547 and 779 of PDE10A (Q9Y233). Run BLAST with  Run BLAST with 
Positive control	Hela cells and whole cell lysate, Cal27 xenograft tissue.
General notes	<p>The Life Science industry has been in the grips of a reproducibility crisis for a number of years. Abcam is leading the way in addressing this with our range of recombinant monoclonal antibodies and knockout edited cell lines for gold-standard validation. Please check that this product meets your needs before purchasing.</p> <p>If you have any questions, special requirements or concerns, please send us an inquiry and/or contact our Support team ahead of purchase. Recommended alternatives for this product can be found below, along with publications, customer reviews and Q&As</p>

Properties

Form	Liquid
Storage instructions	Shipped at 4°C. Upon delivery aliquot. Store at -20°C or -80°C. Avoid freeze / thaw cycle.
Storage buffer	pH: 7.00 Preservative: 0.025% Proclin 300 Constituents: 79% PBS, 20% Glycerol (glycerin, glycerine)
Purity	Immunogen affinity purified
Clonality	Polyclonal
Isotype	IgG

Applications

The Abpromise guarantee

Our **Abpromise guarantee** covers the use of ab151454 in the following tested applications.

The application notes include recommended starting dilutions; optimal dilutions/concentrations should be determined by the end user.

Application	Abreviews	Notes
WB		1/500 - 1/3000. Predicted molecular weight: 88 kDa.
IHC-P		1/100 - 1/1000.
ICC/IF	★★★★★ (1)	1/100 - 1/1000.

Target

Function

Plays a role in signal transduction by regulating the intracellular concentration of cyclic nucleotides. Can hydrolyze both cAMP and cGMP, but has higher affinity for cAMP and is more efficient with cAMP as substrate.

Tissue specificity

Abundant in the putamen and caudate nucleus regions of brain and testis, moderately expressed in the thyroid gland, pituitary gland, thalamus and cerebellum.

Pathway

Purine metabolism; 3',5'-cyclic AMP degradation; AMP from 3',5'-cyclic AMP: step 1/1.
Purine metabolism; 3',5'-cyclic GMP degradation; GMP from 3',5'-cyclic GMP: step 1/1.

Sequence similarities

Belongs to the cyclic nucleotide phosphodiesterase family.
Contains 2 GAF domains.

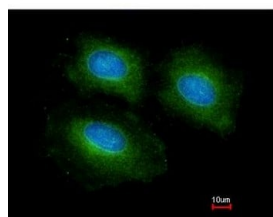
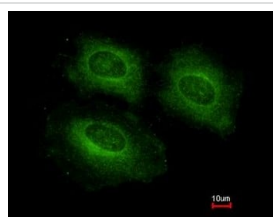
Domain

The tandem GAF domains bind cAMP, and regulate enzyme activity. The binding of cAMP stimulates enzyme activity.
Composed of a C-terminal catalytic domain containing two divalent metal sites and an N-terminal regulatory domain which contains one cyclic nucleotide-binding region.

Cellular localization

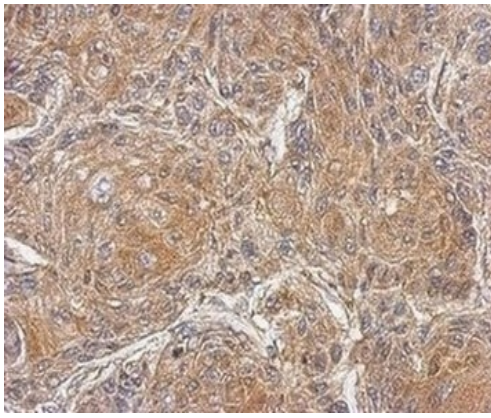
Cytoplasm. Located mostly to soluble cellular fractions.

Images



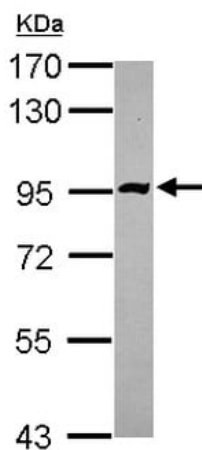
Immunofluorescence analysis of methanol fixed HeLa cells labeling PDE10A with ab151454 at 1/200. The lower panel shows costaining with Hoechst 33342.

Immunocytochemistry/ Immunofluorescence - Anti-PDE10A antibody - C-terminal (ab151454)



Immunohistochemistry (Formalin/PFA-fixed paraffin-embedded sections) - Anti-PDE10A antibody - C-terminal (ab151454)

Immunohistochemical analysis of paraffin embedded Human Cal27 xenograft tissue labeling PDE10A with ab151454 at 1/500.



Anti-PDE10A antibody - C-terminal (ab151454) at 1/3000 dilution + HeLa whole cell lysate at 30 µg

Predicted band size: 88 kDa

7.5% SDS PAGE

Western blot - Anti-PDE10A antibody - C-terminal (ab151454)

Please note: All products are "FOR RESEARCH USE ONLY. NOT FOR USE IN DIAGNOSTIC PROCEDURES"

Our Abpromise to you: Quality guaranteed and expert technical support

- Replacement or refund for products not performing as stated on the datasheet
- Valid for 12 months from date of delivery
- Response to your inquiry within 24 hours
- We provide support in Chinese, English, French, German, Japanese and Spanish
- Extensive multi-media technical resources to help you
- We investigate all quality concerns to ensure our products perform to the highest standards

If the product does not perform as described on this datasheet, we will offer a refund or replacement. For full details of the Abpromise, please visit <https://www.abcam.com/abpromise> or contact our technical team.

Terms and conditions

- Guarantee only valid for products bought direct from Abcam or one of our authorized distributors