

Anti-PDE3B antibody [SMCP3B] ab95814

[1 References](#) [1 Image](#)

Overview

Product name	Anti-PDE3B antibody [SMCP3B]
Description	Rat monoclonal [SMCP3B] to PDE3B
Host species	Rat
Specificity	ab95814 is specific to PDE3B. It does not react with PDE3A.
Tested applications	Suitable for: WB
Species reactivity	Reacts with: Mouse Does not react with: Human
Immunogen	Recombinant fragment, corresponding to C terminal amino acids 643-1100 of Mouse PDE3B expressed in <i>E. coli</i> .
Positive control	Mouse heart lysate; Mouse lymph node cell lysate
General notes	<p>The Life Science industry has been in the grips of a reproducibility crisis for a number of years. Abcam is leading the way in addressing this with our range of recombinant monoclonal antibodies and knockout edited cell lines for gold-standard validation. Please check that this product meets your needs before purchasing.</p> <p>If you have any questions, special requirements or concerns, please send us an inquiry and/or contact our Support team ahead of purchase. Recommended alternatives for this product can be found below, along with publications, customer reviews and Q&As</p>

Properties

Form	Liquid
Storage instructions	Shipped at 4°C. Store at +4°C short term (1-2 weeks). Store at -20°C or -80°C. Avoid freeze / thaw cycle.
Storage buffer	pH: 7.20 Preservative: 0.09% Sodium azide Constituent: 2.68% PBS
Purity	Protein G purified
Clonality	Monoclonal
Clone number	SMCP3B
Isotype	IgG2a

Light chain type

kappa

Applications

The Abpromise guarantee

Our **Abpromise guarantee** covers the use of ab95814 in the following tested applications.

The application notes include recommended starting dilutions; optimal dilutions/concentrations should be determined by the end user.

Application	Abreviews	Notes
WB		Use a concentration of 1 - 5 µg/ml. Predicted molecular weight: 124 kDa.

Target

Function

Cyclic nucleotide phosphodiesterase with a dual-specificity for the second messengers cAMP and cGMP, which are key regulators of many important physiological processes. May play a role in fat metabolism.

Tissue specificity

Abundant in adipose tissues.

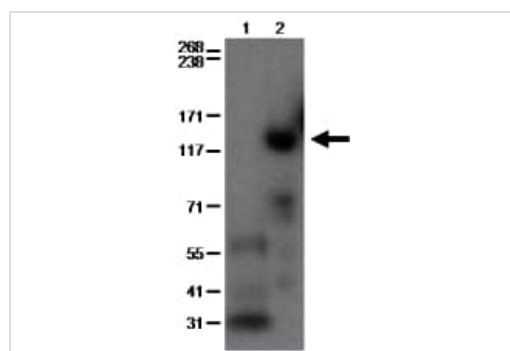
Sequence similarities

Belongs to the cyclic nucleotide phosphodiesterase family. PDE3 subfamily.

Cellular localization

Membrane.

Images



Western blot - Anti-PDE3B antibody [SMCP3B]
(ab95814)

All lanes : Anti-PDE3B antibody [SMCP3B] (ab95814) at 2 µg/ml

Lane 1 : Mouse heart cell lysate

Lane 2 : Mouse lymph node cell lysate

Secondary

All lanes : Anti-Rat IgG HRP

Performed under reducing conditions.

Predicted band size: 124 kDa

Run on a 3-8% Tris-Acetate gel.

Please note: All products are "FOR RESEARCH USE ONLY. NOT FOR USE IN DIAGNOSTIC PROCEDURES"

Our Abpromise to you: Quality guaranteed and expert technical support

- Replacement or refund for products not performing as stated on the datasheet
- Valid for 12 months from date of delivery
- Response to your inquiry within 24 hours

- We provide support in Chinese, English, French, German, Japanese and Spanish
- Extensive multi-media technical resources to help you
- We investigate all quality concerns to ensure our products perform to the highest standards

If the product does not perform as described on this datasheet, we will offer a refund or replacement. For full details of the Abpromise, please visit <https://www.abcam.com/abpromise> or contact our technical team.

Terms and conditions

- Guarantee only valid for products bought direct from Abcam or one of our authorized distributors