


Product datasheet

Anti-PDE4D (phospho S190) antibody ab59212

[1 Abreviews](#) [2 References](#) [2 Images](#)

Overview

Product name	Anti-PDE4D (phospho S190) antibody
Description	Rabbit polyclonal to PDE4D (phospho S190)
Host species	Rabbit
Tested applications	Suitable for: IHC-P, WB
Species reactivity	Reacts with: Human Predicted to work with: Mouse, Rat 
Immunogen	Synthetic peptide corresponding to Human PDE4D aa 150-250 (phospho S190). (R-E-SP-F-L). Database link: Q08499
Positive control	IHC-P: Human colon carcinoma tissue WB: K562 cell extracts treated with H ₂ O ₂ (100uM, 30mins).
General notes	<p>The Life Science industry has been in the grips of a reproducibility crisis for a number of years. Abcam is leading the way in addressing this with our range of recombinant monoclonal antibodies and knockout edited cell lines for gold-standard validation. Please check that this product meets your needs before purchasing.</p> <p>If you have any questions, special requirements or concerns, please send us an inquiry and/or contact our Support team ahead of purchase. Recommended alternatives for this product can be found below, along with publications, customer reviews and Q&As</p>

Properties

Form	Liquid
Storage instructions	Shipped at 4°C. Store at -20°C. Stable for 12 months at -20°C.
Storage buffer	pH: 7.40 Preservative: 0.02% Sodium azide Constituents: PBS, 50% Glycerol (glycerin, glycerine), 0.87% Sodium chloride Without Mg+2 and Ca+2
Purity	Immunogen affinity purified
Purification notes	ab59212 was affinity purified from rabbit antiserum by affinity chromatography using epitope specific phosphopeptide. The antibody against non phosphopeptide was removed by chromatography using non phosphopeptide corresponding to the phosphorylation site.

Clonality	Polyclonal
Isotype	IgG

Applications

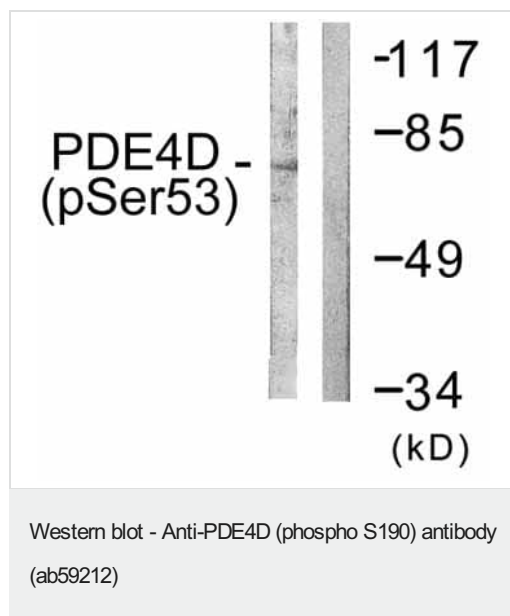
The Abpromise guarantee Our **Abpromise guarantee** covers the use of ab59212 in the following tested applications. The application notes include recommended starting dilutions; optimal dilutions/concentrations should be determined by the end user.

Application	Abreviews	Notes
IHC-P		1/50 - 1/100.
WB		1/500 - 1/1000. Detects a band of approximately 75 kDa (predicted molecular weight: 91 kDa).

Target

Function	Hydrolyzes the second messenger cAMP, which is a key regulator of many important physiological processes.
Tissue specificity	Widespread; most abundant in skeletal muscle. Isoform 6 is detected in brain. Isoform 8 is detected in brain, placenta, lung and kidney. Isoform 7 is detected in heart and skeletal muscle.
Pathway	Purine metabolism; 3',5'-cyclic AMP degradation; AMP from 3',5'-cyclic AMP: step 1/1.
Involvement in disease	Note=Genetic variations in PDE4D might be associated with susceptibility to stroke. PubMed:17006457 states that association with stroke has to be considered with caution.
Sequence similarities	Belongs to the cyclic nucleotide phosphodiesterase family. PDE4 subfamily.
Post-translational modifications	Isoform 3 and isoform 7 are activated by phosphorylation (in vitro), but not isoform 6. Isoform N3 and isoform 12 are phosphorylated on Ser-49, Ser-51, Ser-55 and Ser-59.
Cellular localization	Cytoplasm. Membrane. Cytoplasm > cytoskeleton. Cytoplasm > cytoskeleton > centrosome. Found in the soluble fraction, associated with membranes, and associated with the cytoskeleton and the centrosome.

Images



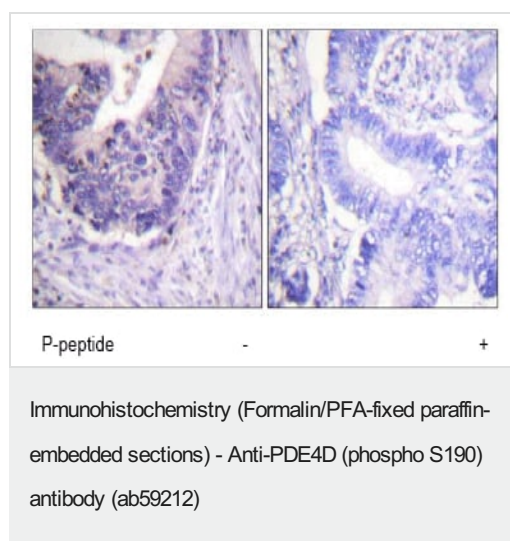
All lanes : Anti-PDE4D (phospho S190) antibody (ab59212) at 1/500 dilution

Lane 1 : K562 cell extract treated with H_2O_2 (100uM, 30mins)

Lane 2 : K562 cell extract treated with H_2O_2 (100uM, 30mins) with immunising peptide

Predicted band size: 91 kDa

Observed band size: 75 kDa



ab59212, at 1/50 dilution, staining PDE4D in paraffin embedded human colon carcinoma tissue by Immunohistochemistry in the absence or presence of the immunising peptide.

Please note: All products are "FOR RESEARCH USE ONLY. NOT FOR USE IN DIAGNOSTIC PROCEDURES"

Our Abpromise to you: Quality guaranteed and expert technical support

- Replacement or refund for products not performing as stated on the datasheet
- Valid for 12 months from date of delivery
- Response to your inquiry within 24 hours
- We provide support in Chinese, English, French, German, Japanese and Spanish
- Extensive multi-media technical resources to help you
- We investigate all quality concerns to ensure our products perform to the highest standards

If the product does not perform as described on this datasheet, we will offer a refund or replacement. For full details of the Abpromise, please visit <https://www.abcam.com/abpromise> or contact our technical team.

Terms and conditions

- Guarantee only valid for products bought direct from Abcam or one of our authorized distributors