




## Product datasheet

### Anti-PDE5A/PDE5 antibody ab28761

★★★★★ [1 Abreviews](#) [2 References](#) [3 Images](#)

#### Overview

<b>Product name</b>	Anti-PDE5A/PDE5 antibody
<b>Description</b>	Goat polyclonal to PDE5A/PDE5
<b>Host species</b>	Goat
<b>Specificity</b>	This antibody is expected to recognise all 4 reported isoforms (as represented by NP_001074; NP_236914; NP_246273). [NP_237223 has been retracted].
<b>Tested applications</b>	<b>Suitable for:</b> Flow Cyt (Intra), WB, ICC/IF
<b>Species reactivity</b>	<b>Reacts with:</b> Human <b>Predicted to work with:</b> Rat, Cow, Dog 
<b>Immunogen</b>	Synthetic peptide corresponding to Human PDE5A/PDE5 aa 864-875 (C terminal). Sequence: C-LINGESG QAKRN  (Peptide available as <a href="#">ab45684</a> ) <div>  <a href="#">Run BLAST with</a>  <a href="#">Run BLAST with</a> </div>
<b>Positive control</b>	Human lung lysate. Lysate prepared from transfected HEK293 cells transiently expressing PDE5A/PDE5 Flow Cyt (Intra): HEK293 cells.
<b>General notes</b>	<p>The Life Science industry has been in the grips of a reproducibility crisis for a number of years. Abcam is leading the way in addressing this with our range of recombinant monoclonal antibodies and knockout edited cell lines for gold-standard validation. Please check that this product meets your needs before purchasing.</p> <p>If you have any questions, special requirements or concerns, please send us an inquiry and/or contact our Support team ahead of purchase. Recommended alternatives for this product can be found below, along with publications, customer reviews and Q&amp;As</p>

#### Properties

<b>Form</b>	Liquid
<b>Storage instructions</b>	Shipped at 4°C. Upon delivery aliquot and store at -20°C. Avoid freeze / thaw cycles.
<b>Storage buffer</b>	pH: 7.30 Preservative: 0.02% Sodium azide Constituents: 0.5% Tris buffered saline, 0.5% BSA

<b>Purity</b>	Immunogen affinity purified
<b>Purification notes</b>	This antibody was purified from goat serum by ammonium sulphate precipitation, followed by antigen affinity chromatography using the immunizing peptide.
<b>Clonality</b>	Polyclonal
<b>Isotype</b>	IgG

## Applications

**The Abpromise guarantee** Our **Abpromise guarantee** covers the use of ab28761 in the following tested applications.

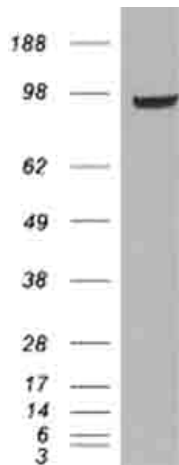
The application notes include recommended starting dilutions; optimal dilutions/concentrations should be determined by the end user.

Application	Abreviews	Notes
Flow Cyt (Intra)		Use a concentration of 10 µg/ml.
WB	★★★★★ (1)	Use a concentration of 0.3 - 1 µg/ml. Detects a band of approximately 100 kDa (predicted molecular weight: 100 kDa). 1 hour primary incubation is recommended for this product.
ICC/IF		Use a concentration of 10 µg/ml.

## Target

<b>Function</b>	Plays a role in signal transduction by regulating the intracellular concentration of cyclic nucleotides. This phosphodiesterase catalyzes the specific hydrolysis of cGMP to 5'-GMP.
<b>Tissue specificity</b>	Expressed in aortic smooth muscle cells, heart, placenta, skeletal muscle and pancreas and, to a much lesser extent, in brain, liver and lung.
<b>Pathway</b>	Purine metabolism; 3',5'-cyclic GMP degradation; GMP from 3',5'-cyclic GMP: step 1/1.
<b>Sequence similarities</b>	Belongs to the cyclic nucleotide phosphodiesterase family. Contains 2 GAF domains.
<b>Domain</b>	Composed of a C-terminal catalytic domain containing two putative divalent metal sites and an N-terminal regulatory domain which contains two homologous allosteric cGMP-binding regions, A and B.
<b>Post-translational modifications</b>	Phosphorylation is regulated by binding of cGMP to the two allosteric sites.

## Images

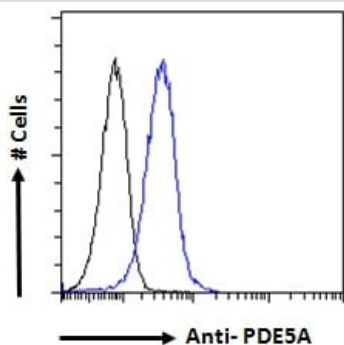


Western blot - Anti-PDE5A/PDE5 antibody  
(ab28761)

Anti-PDE5A/PDE5 antibody (ab28761) at 1 µg/ml + lysate prepared from transfected HEK293 cells transiently expressing PDE5A/PDE5 (isoform 2)

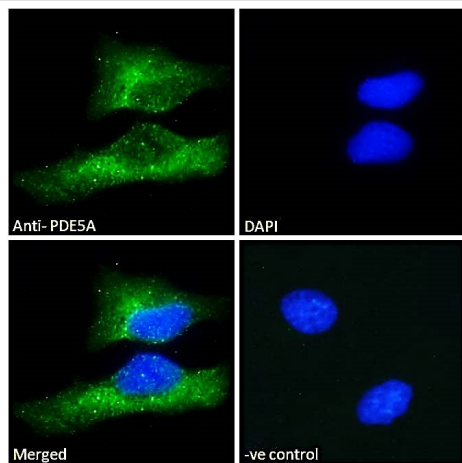
**Predicted band size:** 100 kDa

**Observed band size:** 95 kDa



Flow Cytometry (Intracellular) - Anti-PDE5A/PDE5 antibody (ab28761)

Flow cytometric analysis of paraformaldehyde fixed HEK293 cells (blue line), permeabilized with 0.5% Triton. Primary incubation with ab28761 1hr (10 µg/ml) followed by Alexa Fluor 488 secondary antibody (1 µg/ml). IgG control: Unimmunized goat IgG (black line) followed by Alexa Fluor 488 secondary antibody.



Immunocytochemistry/ Immunofluorescence - Anti-PDE5A/PDE5 antibody (ab28761)

Immunofluorescence analysis of paraformaldehyde fixed HeLa cells, permeabilized with 0.15% Triton. Primary incubation with ab28761 for 1hr (10 µg/ml) followed by Alexa Fluor 488 secondary antibody (2 µg/ml), showing cytoplasmic staining. The nuclear stain is DAPI (blue). Negative control: Unimmunized goat IgG (10 µg/ml) followed by Alexa Fluor 488 secondary antibody (2 µg/ml).

**Please note:** All products are "FOR RESEARCH USE ONLY. NOT FOR USE IN DIAGNOSTIC PROCEDURES"

### Our Abpromise to you: Quality guaranteed and expert technical support

- Replacement or refund for products not performing as stated on the datasheet
- Valid for 12 months from date of delivery
- Response to your inquiry within 24 hours
- We provide support in Chinese, English, French, German, Japanese and Spanish
- Extensive multi-media technical resources to help you
- We investigate all quality concerns to ensure our products perform to the highest standards

If the product does not perform as described on this datasheet, we will offer a refund or replacement. For full details of the Abpromise, please visit <https://www.abcam.com/abpromise> or contact our technical team.

### Terms and conditions

- Guarantee only valid for products bought direct from Abcam or one of our authorized distributors