

Anti-PDE8A antibody ab109597

[2 References](#) [2 Images](#)

Overview

| | |
|----------------------------|---|
| Product name | Anti-PDE8A antibody |
| Description | Rabbit polyclonal to PDE8A |
| Host species | Rabbit |
| Tested applications | Suitable for: WB, IP |
| Species reactivity | Reacts with: Human |
| Immunogen | Synthetic peptide corresponding to a region between residue 779 and 829 of Human PDE8A (NP_002596.1). |
| Positive control | HeLa and 293T whole cell lysates. |
| General notes | <p>The Life Science industry has been in the grips of a reproducibility crisis for a number of years. Abcam is leading the way in addressing this with our range of recombinant monoclonal antibodies and knockout edited cell lines for gold-standard validation. Please check that this product meets your needs before purchasing.</p> <p>If you have any questions, special requirements or concerns, please send us an inquiry and/or contact our Support team ahead of purchase. Recommended alternatives for this product can be found below, along with publications, customer reviews and Q&As</p> |

Properties

| | |
|-----------------------------|---|
| Form | Liquid |
| Storage instructions | Shipped at 4°C. Upon delivery aliquot and store at -20°C. Avoid freeze / thaw cycles. |
| Storage buffer | <p>pH: 7</p> <p>Preservative: 0.09% Sodium azide</p> <p>Constituent: Tris citrate/phosphate</p> |
| Purity | Immunogen affinity purified |
| Clonality | Polyclonal |
| Isotype | IgG |

Applications

The Abpromise guarantee Our **Abpromise guarantee** covers the use of ab109597 in the following tested applications.

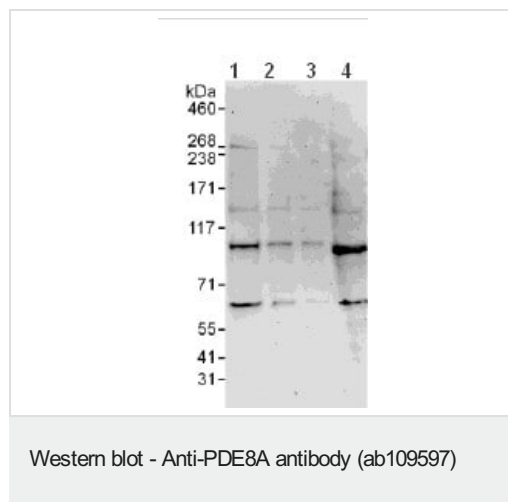
The application notes include recommended starting dilutions; optimal dilutions/concentrations should be determined by the end user.

| Application | Abreviews | Notes |
|-------------|-----------|---|
| WB | | 1/2000 - 1/10000. Predicted molecular weight: 93 kDa. |
| IP | | Use at 2-5 µg/mg of lysate. |

Target

| | |
|------------------------------|--|
| Function | Hydrolyzes the second messenger cAMP, which is a key regulator of many important physiological processes. May be involved in maintaining basal levels of the cyclic nucleotide and/or in the cAMP regulation of germ cell development. |
| Tissue specificity | Expressed in most tissues except thymus and peripheral blood leukocytes. Highest levels in testis, ovary, small intestine and colon. |
| Pathway | Purine metabolism; 3',5'-cyclic AMP degradation; AMP from 3',5'-cyclic AMP: step 1/1. |
| Sequence similarities | Belongs to the cyclic nucleotide phosphodiesterase family. PDE8 subfamily. Contains 1 PAC (PAS-associated C-terminal) domain. Contains 1 PAS (PER-ARNT-SIM) domain. |
| Domain | Composed of a C-terminal catalytic domain containing two putative divalent metal sites and an N-terminal regulatory domain. |

Images



All lanes : Anti-PDE8A antibody (ab109597) at 0.1 µg/ml

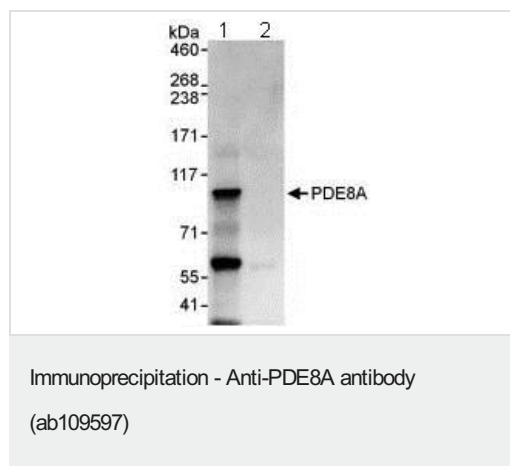
Lane 1 : HeLa cell lysate at 50 µg

Lane 2 : HeLa cell lysate at 15 µg

Lane 3 : HeLa cell lysate at 5 µg

Lane 4 : 293T cell lysate at 50 µg

Predicted band size: 93 kDa



Detection of PDE8A by Western Blot of Immunoprecipitate.

Lane 1: ab109597 at 1µg/ml staining PDE8A in HeLa whole cell lysate immunoprecipitated using ab109597 at 6µg/mg lysate (1 mg/IP; 20% of IP loaded/lane).

Lane 2: Control IgG

Detection: Chemiluminescence with exposure time of 30 seconds.

All lanes : Anti-PDE8A antibody (ab109597) at 1 µg

Lane 1 : IP of 6 µg of PDE8A antibody/mg HeLa cell lysate

Lane 2 : Control IgG with HeLa cell lysate

Lysates/proteins at 1000 µg per lane.

Please note: All products are "FOR RESEARCH USE ONLY. NOT FOR USE IN DIAGNOSTIC PROCEDURES"

Our Abpromise to you: Quality guaranteed and expert technical support

- Replacement or refund for products not performing as stated on the datasheet
- Valid for 12 months from date of delivery
- Response to your inquiry within 24 hours
- We provide support in Chinese, English, French, German, Japanese and Spanish
- Extensive multi-media technical resources to help you
- We investigate all quality concerns to ensure our products perform to the highest standards

If the product does not perform as described on this datasheet, we will offer a refund or replacement. For full details of the Abpromise, please visit <https://www.abcam.com/abpromise> or contact our technical team.

Terms and conditions

- Guarantee only valid for products bought direct from Abcam or one of our authorized distributors