

Product datasheet

Anti-PDGFR alpha antibody [APA5] - Low endotoxin, Azide free ab171230

[1 Image](#)

Overview

Product name	Anti-PDGFR alpha antibody [APA5] - Low endotoxin, Azide free
Description	Rat monoclonal [APA5] to PDGFR alpha - Low endotoxin, Azide free
Host species	Rat
Tested applications	Suitable for: Flow Cyt
Species reactivity	Reacts with: Mouse
Immunogen	Fusion protein corresponding to Mouse PDGFR alpha (extracellular). Fusion protein containing the extracellular domain of Mouse PDGFR alpha and the Fc portion of Human IgG1 purified from the culture supernatant of transfected COS1 cells
Positive control	Mouse NIH 3T3 cell line
General notes	<p>Endotoxin Level: Less than 0.001 ng/μg antibody, as determined by the LAL assay.</p> <p>The Life Science industry has been in the grips of a reproducibility crisis for a number of years. Abcam is leading the way in addressing this with our range of recombinant monoclonal antibodies and knockout edited cell lines for gold-standard validation. Please check that this product meets your needs before purchasing.</p> <p>If you have any questions, special requirements or concerns, please send us an inquiry and/or contact our Support team ahead of purchase. Recommended alternatives for this product can be found below, along with publications, customer reviews and Q&As</p>

Properties

Form	Liquid
Storage instructions	Shipped at 4°C. Store at +4°C short term (1-2 weeks). Upon delivery aliquot. Store at -20°C long term. Avoid freeze / thaw cycle.
Storage buffer	pH: 7.2 Constituent: PBS
Carrier free	Yes
Purity	Affinity purified
Clonality	Monoclonal
Clone number	APA5

Isotype	IgG2a
Light chain type	kappa

Applications

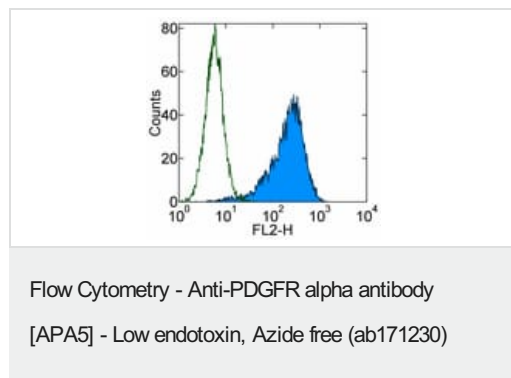
The Abpromise guarantee Our **Abpromise guarantee** covers the use of ab171230 in the following tested applications. The application notes include recommended starting dilutions; optimal dilutions/concentrations should be determined by the end user.

Application	Abreviews	Notes
Flow Cyt		<p>Use 1 µg for 10⁵⁻⁸ cells. Final test volume = 100 µL</p> <p>ab18450 - Rat monoclonal IgG2a, is suitable for use as an isotype control with this antibody.</p>

Target

Function	Receptor that binds both PDGFA and PDGFB and has a tyrosine-protein kinase activity.
Tissue specificity	Expressed in primary and metastatic colon tumors and in normal colon tissue. Tumors may express a different isoform to that found in normal tissue.
Involvement in disease	Note=A chromosomal aberration involving PDGFRA is found in some cases of hypereosinophilic syndrome. Interstitial chromosomal deletion del(4)(q12q12) causes the fusion of FIP1L1 and PDGFRA (FIP1L1-PDGFR).
Sequence similarities	<p>Belongs to the protein kinase superfamily. Tyr protein kinase family. CSF-1/PDGF receptor subfamily.</p> <p>Contains 5 Ig-like C2-type (immunoglobulin-like) domains.</p> <p>Contains 1 protein kinase domain.</p>
Cellular localization	Membrane.

Images



Flow cytometry analysis of NIH 3T3 cells using ab171230 at 0.5 µg (blue histogram) or purified Rat IgG2a kappa Isotype Control (open histogram) at 0.5 µg; Followed by anti-Rat IgG Biotin and Streptavidin PE. Total viable cells were used for analysis.

Please note: All products are "FOR RESEARCH USE ONLY. NOT FOR USE IN DIAGNOSTIC PROCEDURES"

Our Abpromise to you: Quality guaranteed and expert technical support

- Replacement or refund for products not performing as stated on the datasheet
- Valid for 12 months from date of delivery
- Response to your inquiry within 24 hours

- We provide support in Chinese, English, French, German, Japanese and Spanish
- Extensive multi-media technical resources to help you
- We investigate all quality concerns to ensure our products perform to the highest standards

If the product does not perform as described on this datasheet, we will offer a refund or replacement. For full details of the Abpromise, please visit <https://www.abcam.com/abpromise> or contact our technical team.

Terms and conditions

- Guarantee only valid for products bought direct from Abcam or one of our authorized distributors