

## Product datasheet

# Anti-PDGFR alpha antibody [EPR5480] ab134123

KO VALIDATED Recombinant RabMAB

★★★★☆ 4 Abreviews 11 References 9 Images

### Overview

<b>Product name</b>	Anti-PDGFR alpha antibody [EPR5480]
<b>Description</b>	Rabbit monoclonal [EPR5480] to PDGFR alpha
<b>Host species</b>	Rabbit
<b>Specificity</b>	Mouse and rat species are recommended based on WB result. We do not guarantee IHC-P for mouse and rat.
<b>Tested applications</b>	<b>Suitable for:</b> Flow Cyt (Intra), Indirect ELISA, WB, IHC-P
<b>Species reactivity</b>	<b>Reacts with:</b> Mouse, Rat, Human
<b>Immunogen</b>	Synthetic peptide. This information is proprietary to Abcam and/or its suppliers.
<b>Positive control</b>	IHC-P: Human colonic carcinoma, human colon tissue. WB: SH SY5Y, Human skeletal muscle, Human spleen, and Human fetal brain lysates. Flow Cyt (intra): SH-SY5Y, L6 cells.
<b>General notes</b>	<p>This product is a recombinant monoclonal antibody, which offers several advantages including:</p> <ul style="list-style-type: none"><li>- High batch-to-batch consistency and reproducibility</li><li>- Improved sensitivity and specificity</li><li>- Long-term security of supply</li><li>- Animal-free production</li></ul> <p>For more information <a href="#">see here</a>.</p> <p>Our RabMAB<sup>®</sup> technology is a patented hybridoma-based technology for making rabbit monoclonal antibodies. For details on our patents, please refer to <a href="#">RabMAB<sup>®</sup> patents</a>.</p>

### Properties

<b>Form</b>	Liquid
<b>Storage instructions</b>	Shipped at 4°C. Store at -20°C. Stable for 12 months at -20°C.
<b>Storage buffer</b>	pH: 7.2 Preservative: 0.05% Sodium azide Constituents: 40% Glycerol (glycerin, glycerine), 9.85% Tris glycine, 50% Tissue culture supernatant
<b>Purity</b>	Protein A purified
<b>Clonality</b>	Monoclonal

Clone number                   EPR5480  
Isotype                            IgG

## Applications

**The Abpromise guarantee**           Our **Abpromise guarantee** covers the use of ab134123 in the following tested applications.

The application notes include recommended starting dilutions; optimal dilutions/concentrations should be determined by the end user.

Application	Abreviews	Notes
Flow Cyt (Intra)		1/20.
Indirect ELISA		Use at an assay dependent concentration.
WB		1/1000 - 1/10000. Detects a band of approximately 190 kDa (predicted molecular weight: 122 kDa).
IHC-P	★ ★ ★ ★ ☆ (4)	1/500. Perform heat mediated antigen retrieval with Tris/EDTA buffer pH 9.0 before commencing with IHC staining protocol. See <a href="#">IHC antigen retrieval protocols</a> .

## Target

**Function**                                Receptor that binds both PDGFA and PDGFB and has a tyrosine-protein kinase activity.

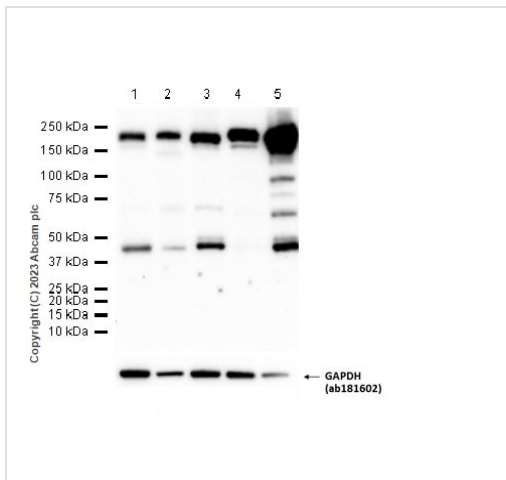
**Tissue specificity**                    Expressed in primary and metastatic colon tumors and in normal colon tissue. Tumors may express a different isoform to that found in normal tissue.

**Involvement in disease**              Note=A chromosomal aberration involving PDGFRA is found in some cases of hypereosinophilic syndrome. Interstitial chromosomal deletion del(4)(q12q12) causes the fusion of FIP1L1 and PDGFRA (FIP1L1-PDGFRA).

**Sequence similarities**                 Belongs to the protein kinase superfamily. Tyr protein kinase family. CSF-1/PDGF receptor subfamily.  
Contains 5 Ig-like C2-type (immunoglobulin-like) domains.  
Contains 1 protein kinase domain.

**Cellular localization**                 Membrane.

## Images



Western blot - Anti-PDGFR alpha antibody [EPR5480] (ab134123)

**All lanes** : Anti-PDGFR alpha antibody [EPR5480] (ab134123) at 1/1000 dilution

**Lane 1** : Rat heart tissue lysate

**Lane 2** : Rat lung tissue lysate

**Lane 3** : Mouse brain tissue lysate

**Lane 4** : Mouse heart tissue lysate

**Lane 5** : Mouse lung tissue lysate

Lysates/proteins at 20 µg per lane.

### Secondary

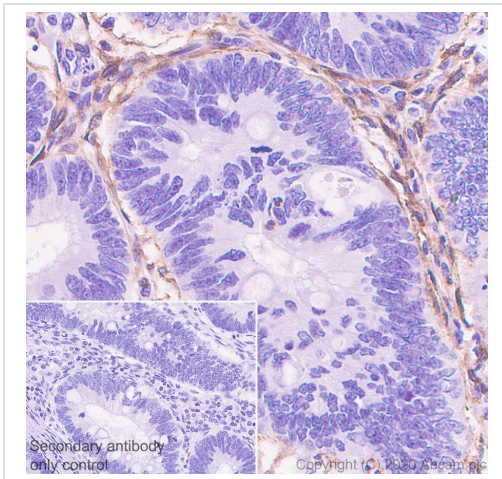
**All lanes** : Goat Anti-Rabbit IgG (HRP) with minimal cross-reactivity with human IgG at 1/2000 dilution

**Predicted band size:** 122 kDa

**Observed band size:** 150 kDa

**Exposure time:** 80 seconds

Blocking/dilution buffer: 5% NFD/MTBST.

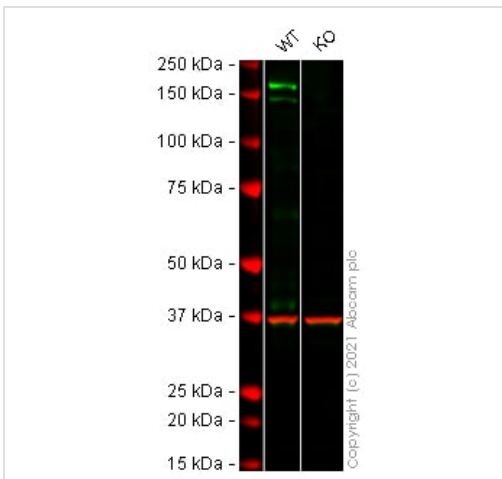


Immunohistochemistry (Formalin/PFA-fixed paraffin-embedded sections) - Anti-PDGFR alpha antibody [EPR5480] (ab134123)

Immunohistochemical analysis of paraffin-embedded Human colonic carcinoma tissue labeling PDGFR alpha with ab134123 at 1/500 dilution followed by a ready to use Rabbit specific IHC polymer detection kit HRP/DAB (**ab209101**). Positive staining on stromal cells in human colonic carcinoma. The section was incubated with ab134123 for 30 mins at room temperature. The immunostaining was performed on a Leica Biosystems BOND® RX instrument Counterstained with Hematoxylin.

Secondary antibody only control: Secondary antibody is a ready to use Rabbit specific IHC polymer detection kit HRP/DAB (**ab209101**).

Heat mediated antigen retrieval with Tris-EDTA buffer (pH 9.0, epitope retrieval solution2) for 20 mins



Western blot - Anti-PDGFR alpha antibody [EPR5480] (ab134123)

**All lanes** : Anti-PDGFR alpha antibody [EPR5480] (ab134123) at 1/1000 dilution

**Lane 1** : Wild-type SH-SY5Y cell lysate

**Lane 2** : PDGFRA knockout SH-SY5Y cell lysate

Lysates/proteins at 40 µg per lane.

Performed under reducing conditions.

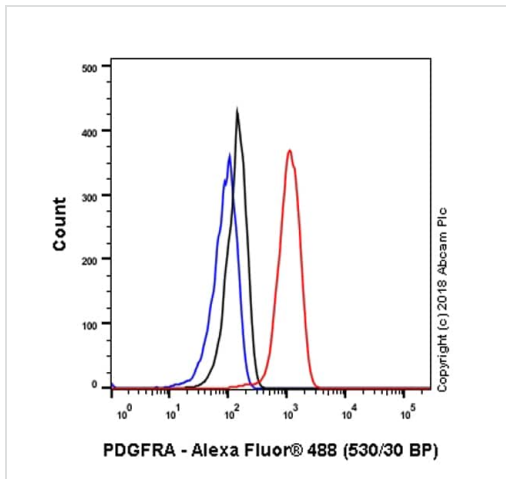
**Predicted band size:** 122 kDa

**Observed band size:** 180 kDa

**Lanes 1 - 2:** Merged signal (red and green). Green - ab134123 observed at 180 kDa. Red - loading control **ab8245** (Mouse anti-GAPDH antibody [6C5]) observed at 37 kDa.

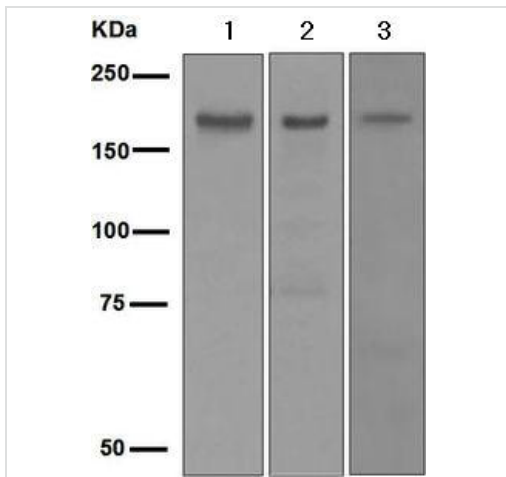
ab134123 was shown to react with PDGFR alpha in wild-type SH-SY5Y cells in Western blot with loss of signal observed in PDGFRA knockout cell line **ab275335** (knockout cell lysate **ab275522**). Wild-type SH-SY5Y and PDGFRA knockout cell lysates were subjected to SDS-PAGE. Membranes were blocked in 3 % milk in TBS-T (0.1 % Tween®) before incubation with ab134123 and **ab8245** (Mouse anti-GAPDH antibody [6C5]) overnight at 4 °C at a 1 in 1000 dilution and a 1 in 20000 dilution respectively. Blots were incubated with Goat anti-Rabbit IgG H&L (IRDye® 800CW) preabsorbed (**ab216773**) and Goat anti-Mouse IgG H&L (IRDye® 680RD)

preabsorbed (**ab216776**) secondary antibodies at 1 in 20000 dilution for 1 h at room temperature before imaging.



Flow Cytometry (Intracellular) - Anti-PDGFR alpha antibody [EPR5480] (ab134123)

Intracellular Flow Cytometry analysis of L6 (Rat skeletal muscle myoblast) cells labelling PDGFR alpha with ab134123 at 1/20 dilution (14.65 µg/ml) (Red). Cells were fixed with 4% paraformaldehyde. Goat anti rabbit IgG (Alexa Fluor® 488, **ab150077**) was used as the secondary antibody at 1/2000 dilution. Isotype control - Rabbit monoclonal IgG (**ab172730**) (Black). Unlabelled control - Unlabelled cells (Blue).



Western blot - Anti-PDGFR alpha antibody [EPR5480] (ab134123)

**All lanes** : Anti-PDGFR alpha antibody [EPR5480] (ab134123) at 1/1000 dilution

**Lane 1** : Human skeletal muscle lysate

**Lane 2** : Human spleen lysate

**Lane 3** : Human fetal brain lysate

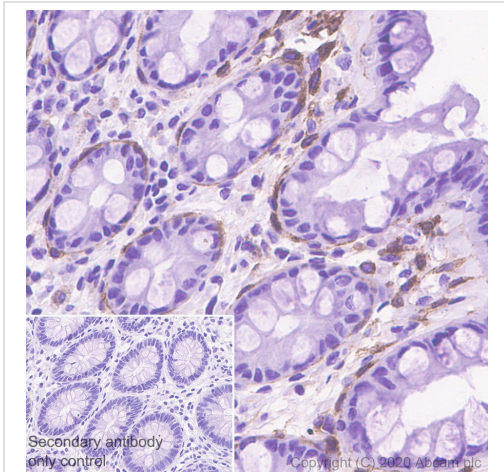
Lysates/proteins at 10 µg per lane.

#### Secondary

**All lanes** : Goat anti-rabbit HRP conjugated antibody at 1/2000 dilution

**Predicted band size:** 122 kDa

**Observed band size:** 190 kDa

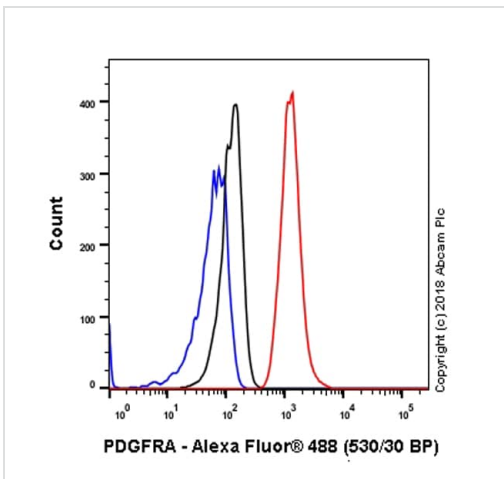


Immunohistochemistry (Formalin/PFA-fixed paraffin-embedded sections) - Anti-PDGFR alpha antibody [EPR5480] (ab134123)

Immunohistochemical analysis of paraffin-embedded Human colon tissue labeling PDGFR alpha with ab134123 at 1/500 dilution followed by a ready to use Rabbit specific IHC polymer detection kit HRP/DAB (**ab209101**). Positive staining on stromal cells in human colon (PMID: 23429582). The section was incubated with ab134123 for 30 mins at room temperature. The immunostaining was performed on a Leica Biosystems BOND® RX instrument Counterstained with Hematoxylin.

Secondary antibody only control: Secondary antibody is a ready to use Rabbit specific IHC polymer detection kit HRP/DAB (**ab209101**).

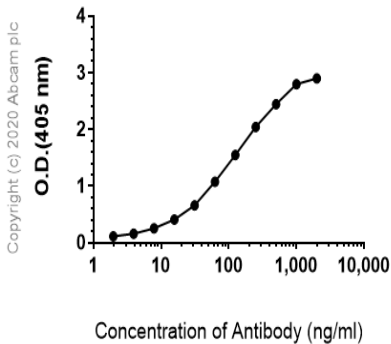
Heat mediated antigen retrieval with Tris-EDTA buffer (pH 9.0, epitope retrieval solution2) for 20 mins



Flow Cytometry (Intracellular) - Anti-PDGFR alpha antibody [EPR5480] (ab134123)

Intracellular Flow Cytometry analysis of SH-SY5Y (Human neuroblastoma epithelial cell) cells labelling PDGFR alpha with ab134123 at 1/20 dilution (14.65µg/ml) (Red). Cells were fixed with 4% paraformaldehyde . Goat anti rabbit IgG (Alexa Fluor® 488, **ab150077**) was used as the secondary antibody at 1/2000 dilution. Isotype control - Rabbit monoclonal IgG (**ab172730**) (Black). Unlabeled control - Unlabelled cells (Blue).





### Indirect ELISA antibody dose-response curve antigen at 250 ng/ml



Indirect ELISA - Anti-PDGFR alpha antibody  
[EPR5480] (ab134123)

ELISA analysis of Human PDGFR alpha recombinant protein at 250 ng/mL with ab134123. An Alkaline Phosphatase-conjugated AffiniPure Goat Anti-Rabbit IgG (H+L) at 1/2500 dilution was used as the secondary antibody.

### Why choose a recombinant antibody?

 <p><b>Research with confidence</b> Consistent and reproducible results</p>	 <p><b>Long-term and scalable supply</b> Recombinant technology</p>
 <p><b>Success from the first experiment</b> Confirmed specificity</p>	 <p><b>Ethical standards compliant</b> Animal-free production</p>

Anti-PDGFR alpha antibody [EPR5480] (ab134123)

**Please note:** All products are "FOR RESEARCH USE ONLY. NOT FOR USE IN DIAGNOSTIC PROCEDURES"

### Our Promise to you: Quality guaranteed and expert technical support

- Replacement or refund for products not performing as stated on the datasheet
- Valid for 12 months from date of delivery
- Response to your inquiry within 24 hours
- We provide support in Chinese, English, French, German, Japanese and Spanish
- Extensive multi-media technical resources to help you
- We investigate all quality concerns to ensure our products perform to the highest standards

If the product does not perform as described on this datasheet, we will offer a refund or replacement. For full details of the Abpromise, please visit <https://www.abcam.com/abpromise> or contact our technical team.

### **Terms and conditions**

---

- Guarantee only valid for products bought direct from Abcam or one of our authorized distributors