

Product datasheet

Anti-PDGFR beta (phospho Y1021) antibody [EPR2476] ab134048

Recombinant RabMAb

★ ★ ★ ★ ★ **1 Abreviews** [5 Images](#)

Overview

Product name	Anti-PDGFR beta (phospho Y1021) antibody [EPR2476]
Description	Rabbit monoclonal [EPR2476] to PDGFR beta (phospho Y1021)
Host species	Rabbit
Tested applications	Suitable for: WB, Flow Cyt (Intra), Dot blot Unsuitable for: ICC/IF or IHC-P
Species reactivity	Reacts with: Mouse
Immunogen	Synthetic peptide. This information is proprietary to Abcam and/or its suppliers.
Positive control	NIH/3T3 lysates treated with Pervanadate
General notes	<p>This product is a recombinant monoclonal antibody, which offers several advantages including:</p> <ul style="list-style-type: none"> - High batch-to-batch consistency and reproducibility - Improved sensitivity and specificity - Long-term security of supply - Animal-free production <p>For more information see here.</p> <p>Our RabMAb[®] technology is a patented hybridoma-based technology for making rabbit monoclonal antibodies. For details on our patents, please refer to RabMAb[®] patents.</p> <p>Human, Rat: We have preliminary internal testing data to indicate this antibody may not react with these species. Please contact us for more information.</p>

Properties

Form	Liquid
Storage instructions	Shipped at 4°C. Store at -20°C. Stable for 12 months at -20°C.
Storage buffer	<p>pH: 7.2</p> <p>Preservative: 0.05% Sodium azide</p> <p>Constituents: 0.1% BSA, 40% Glycerol (glycerin, glycerine), 9.85% Tris glycine, 50% Tissue culture supernatant</p>
Purity	Tissue culture supernatant

Clonality	Monoclonal
Clone number	EPR2476
Isotype	IgG

Applications

The Abpromise guarantee Our **Abpromise guarantee** covers the use of ab134048 in the following tested applications. The application notes include recommended starting dilutions; optimal dilutions/concentrations should be determined by the end user.

Application	Abreviews	Notes
WB	★☆☆☆☆ (1)	1/50000 - 1/200000. Predicted molecular weight: 190 kDa.
Flow Cyt (Intra)		1/10 - 1/100. ab172730 - Rabbit monoclonal IgG, is suitable for use as an isotype control with this antibody.
Dot blot		1/1000.

Application notes Is unsuitable for ICC/IF or IHC-P.

Target

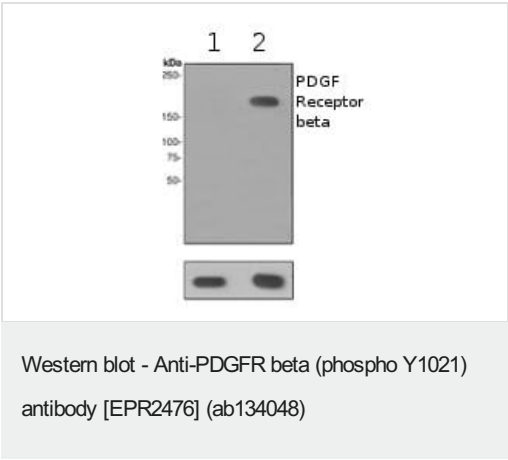
Function Receptor that binds specifically to PDGFB and PDGFD and has a tyrosine-protein kinase activity. Phosphorylates Tyr residues at the C-terminus of PTPN11 creating a binding site for the SH2 domain of GRB2.

Involvement in disease Note=A chromosomal aberration involving PDGFRB is found in a form of chronic myelomonocytic leukemia (CMML). Translocation t(5;12)(q33;p13) with EVT6/TEL. It is characterized by abnormal clonal myeloid proliferation and by progression to acute myelogenous leukemia (AML).
Note=A chromosomal aberration involving PDGFRB may be a cause of acute myelogenous leukemia. Translocation t(5;14)(q33;q32) with TRIP11. The fusion protein may be involved in clonal evolution of leukemia and eosinophilia.
Note=A chromosomal aberration involving PDGFRB may be a cause of juvenile myelomonocytic leukemia. Translocation t(5;17)(q33;p11.2) with SPECC1.
Defects in PDGFRB are a cause of myeloproliferative disorder chronic with eosinophilia (MPE) [MIM:131440]. A hematologic disorder characterized by malignant eosinophils proliferation.
Note=A chromosomal aberration involving PDGFRB is found in many instances of myeloproliferative disorder chronic with eosinophilia. Translocation t(5;12) with ETV6 on chromosome 12 creating an PDGFRB-ETV6 fusion protein.
Note=A chromosomal aberration involving PDGFRB may be the cause of a myeloproliferative disorder (MBD) associated with eosinophilia. Translocation t(1;5)(q23;q33) that forms a PDE4DIP-PDGFRB fusion protein.

Sequence similarities Belongs to the protein kinase superfamily. Tyr protein kinase family. CSF-1/PDGF receptor subfamily.
Contains 5 Ig-like C2-type (immunoglobulin-like) domains.
Contains 1 protein kinase domain.

Post-translational modifications Autophosphorylated. Dephosphorylated by PTPRJ at Tyr-751, Tyr-857, Tyr-1009 and Tyr-1021.

Images



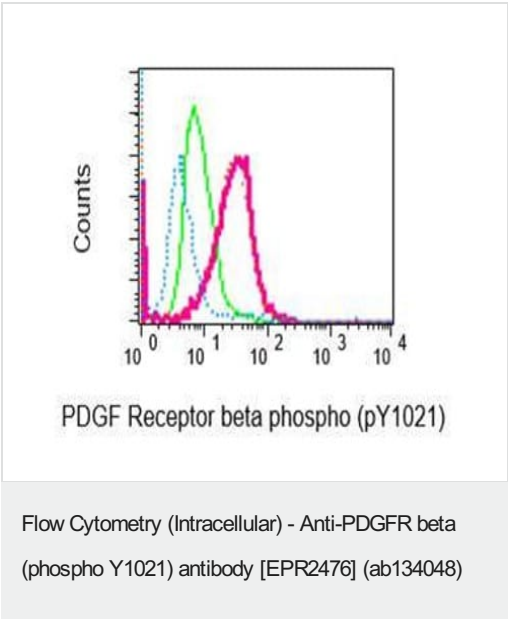
All lanes : Anti-PDGFR beta (phospho Y1021) antibody [EPR2476] (ab134048) at 1/50000 dilution

Lane 1 : NIH/3T3 untreated
Lane 2 : NIH/3T3 treated with Pervanadate

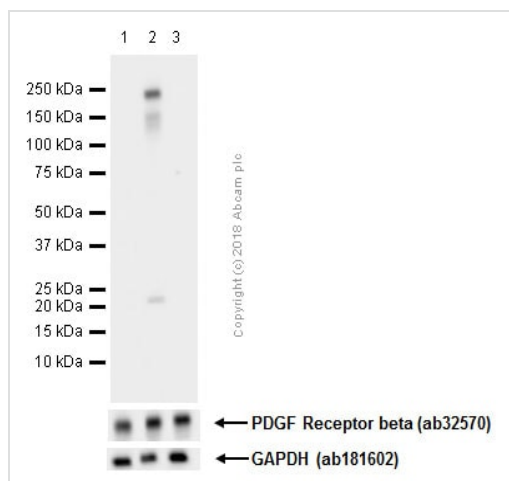
Lysates/proteins at 10 µg per lane.

Secondary
All lanes : HRP labelled goat anti-rabbit at 1/2000 dilution

Predicted band size: 190 kDa



Intracellular Flow Cytometric analysis of permeabilized NIH/3T3 cells, untreated (green) or pervanadate-treated (red) using anti-PDGF Receptor beta phospho RabMab and pervanadate-treated NIH/3T3 cells using the same antibody preincubated with phospho-PDGF Receptor beta peptide (blue) or non-phospho-PDGF Receptor beta peptide (orange)



Western blot - Anti-PDGFR beta (phospho Y1021) antibody [EPR2476] (ab134048)

All lanes : Anti-PDGFR beta (phospho Y1021) antibody [EPR2476] (ab134048) at 1/5000 dilution (Purified)

Lane 1 : NIH/3T3 (Mouse embryonic fibroblast cell line) whole cell lysate

Lane 2 : NIH/3T3 treated with 1mM pervanadate for 30 minutes whole cell lysate

Lane 3 : NIH/3T3 treated with 1mM pervanadate for 30 minutes whole cell lysate. Then the membrane was incubated with alkaline phosphatase

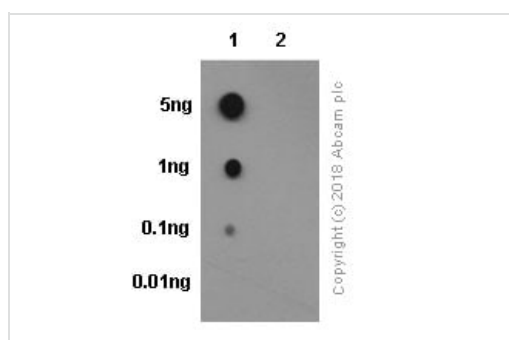
Lysates/proteins at 10 µg per lane.

Secondary

All lanes : Goat Anti-Rabbit IgG H&L (HRP) (**ab97051**) at 1/20000 dilution

Predicted band size: 190 kDa

Blocking/Diluting Buffer and concentration 5% NFDM/TBST



Dot Blot - Anti-PDGFR beta (phospho Y1021) antibody [EPR2476] (ab134048)

Dot blot analysis of PDGFR beta (phospho Y1021) phosphopeptide (Lane 1) and PDGFR beta non-phospho peptide (Lane 2) labeling PDGFR beta (phospho Y1021) phosphopeptide with ab134048 at a dilution of 1/1000 dilution (0.54ug/ml). A Goat Anti-Rabbit IgG, (H+L), Peroxidase conjugated (**ab97051**) was used as the secondary antibody at a dilution of 1/20,000 dilution.

Blocking buffer: 5% NFDM/TBST. Dilution buffer: 5% NFDM /TBST

Why choose a recombinant antibody?



Research with confidence
Consistent and reproducible results



Long-term and scalable supply
Recombinant technology



Success from the first experiment
Confirmed specificity



Ethical standards compliant
Animal-free production

Anti-PDGFR beta (phospho Y1021) antibody
[EPR2476] (ab134048)

Please note: All products are "FOR RESEARCH USE ONLY. NOT FOR USE IN DIAGNOSTIC PROCEDURES"

Our Abpromise to you: Quality guaranteed and expert technical support

- Replacement or refund for products not performing as stated on the datasheet
- Valid for 12 months from date of delivery
- Response to your inquiry within 24 hours
- We provide support in Chinese, English, French, German, Japanese and Spanish
- Extensive multi-media technical resources to help you
- We investigate all quality concerns to ensure our products perform to the highest standards

If the product does not perform as described on this datasheet, we will offer a refund or replacement. For full details of the Abpromise, please visit <https://www.abcam.com/abpromise> or contact our technical team.

Terms and conditions

- Guarantee only valid for products bought direct from Abcam or one of our authorized distributors