

## Product datasheet

### Anti-PDK1 antibody [SP270] - C-terminal ab227682

Recombinant **RabMAb**

[1 References](#) [8 Images](#)

#### Overview

<b>Product name</b>	Anti-PDK1 antibody [SP270] - C-terminal
<b>Description</b>	Rabbit monoclonal [SP270] to PDK1 - C-terminal
<b>Host species</b>	Rabbit
<b>Tested applications</b>	<b>Suitable for:</b> IHC-P
<b>Species reactivity</b>	<b>Reacts with:</b> Human
<b>Immunogen</b>	Synthetic peptide. This information is proprietary to Abcam and/or its suppliers.
<b>Positive control</b>	IHC-P: Human kidney, liver, stomach, heart, pancreas, testis and liver hepatocellular carcinoma tissues.
<b>General notes</b>	<b>This product is FOR RESEARCH USE ONLY. For commercial use, please contact <a href="mailto:partnerships@abcam.com">partnerships@abcam.com</a>.</b>

#### Properties

<b>Form</b>	Liquid
<b>Storage instructions</b>	Shipped at 4°C. Store at +4°C short term (1-2 weeks). Upon delivery aliquot. Store at -20°C long term. Avoid freeze / thaw cycle.
<b>Storage buffer</b>	pH: 7.60 Preservative: 0.1% Sodium azide Constituents: PBS, 1% BSA
<b>Purity</b>	Protein A/G purified
<b>Purification notes</b>	Purified from TCS by Protein A/G.
<b>Clonality</b>	Monoclonal
<b>Clone number</b>	SP270
<b>Isotype</b>	IgG

#### Applications

**The Abpromise guarantee** Our **Abpromise guarantee** covers the use of ab227682 in the following tested applications.

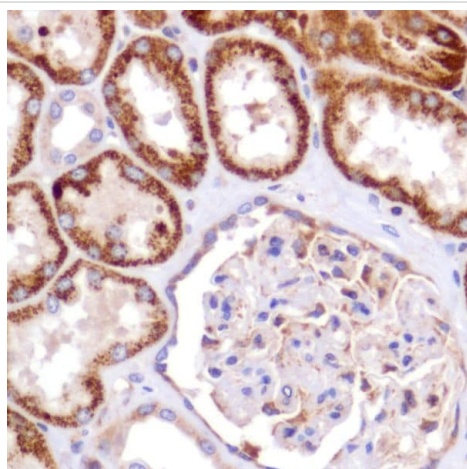
The application notes include recommended starting dilutions; optimal dilutions/concentrations should be determined by the end user.

Application	Abreviews	Notes
IHC-P		1/100. Boil tissue section in EDTA buffer, pH 8.0 for 10 minutes followed by cooling at room temperature for 20 minutes. Primary antibody incubation for 10 minutes at room temperature.

## Target

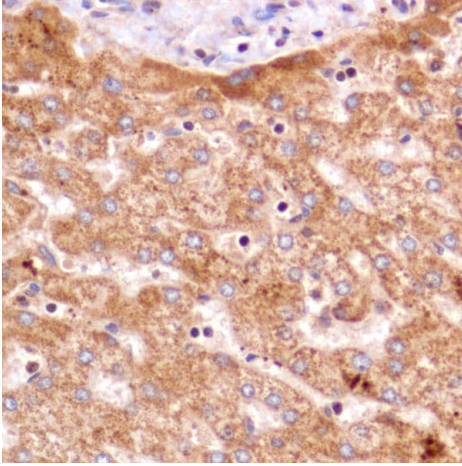
Function	Inhibits the mitochondrial pyruvate dehydrogenase complex by phosphorylation of the E1 alpha subunit, thus contributing to the regulation of glucose metabolism.
Tissue specificity	Expressed predominantly in the heart.
Sequence similarities	Belongs to the PDK/BCKDK protein kinase family. Contains 1 histidine kinase domain.
Cellular localization	Mitochondrion matrix.

## Images



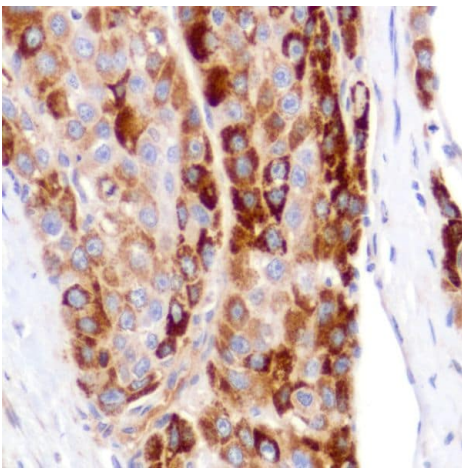
Formalin-fixed, paraffin-embedded human kidney tissue stained for PDK1 using ab227682 at 1/100 dilution in immunohistochemical analysis.

Immunohistochemistry (Formalin/PFA-fixed paraffin-embedded sections) - Anti-PDK1 antibody [SP270] - C-terminal (ab227682)



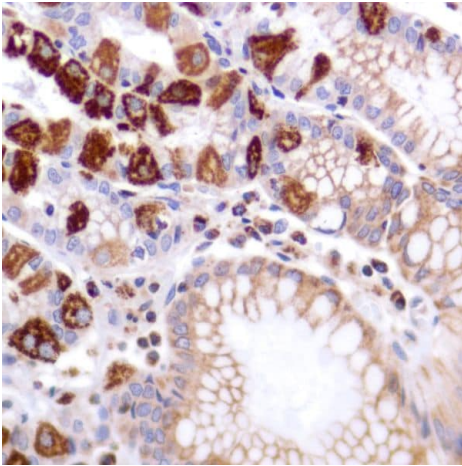
Formalin-fixed, paraffin-embedded human liver tissue stained for PDK1 using ab227682 at 1/100 dilution in immunohistochemical analysis.

Immunohistochemistry (Formalin/PFA-fixed paraffin-embedded sections) - Anti-PDK1 antibody [SP270] - C-terminal (ab227682)



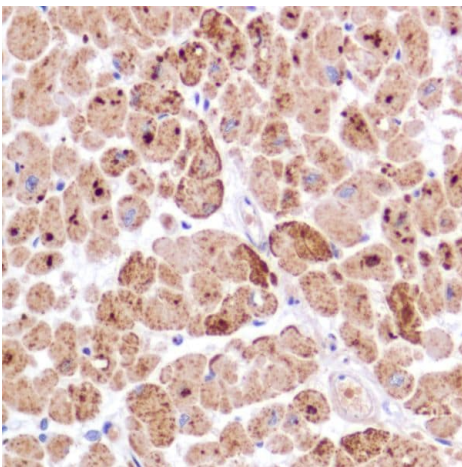
Formalin-fixed, paraffin-embedded human liver hepatocellular carcinoma tissue stained for PDK1 using ab227682 at 1/100 dilution in immunohistochemical analysis.

Immunohistochemistry (Formalin/PFA-fixed paraffin-embedded sections) - Anti-PDK1 antibody [SP270] - C-terminal (ab227682)



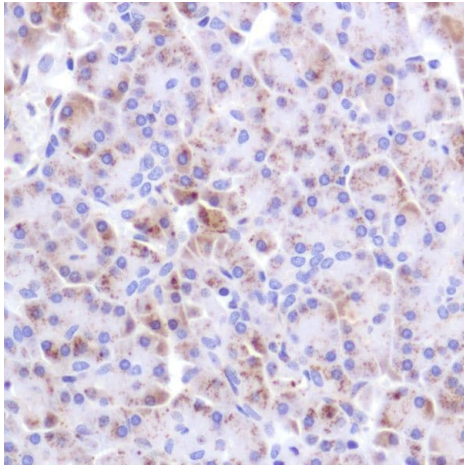
Immunohistochemistry (Formalin/PFA-fixed paraffin-embedded sections) - Anti-PDK1 antibody [SP270] - C-terminal (ab227682)

Formalin-fixed, paraffin-embedded human stomach tissue stained for PDK1 using ab227682 at 1/100 dilution in immunohistochemical analysis.



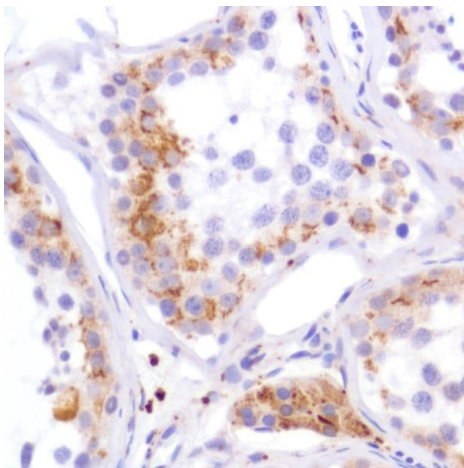
Immunohistochemistry (Formalin/PFA-fixed paraffin-embedded sections) - Anti-PDK1 antibody [SP270] - C-terminal (ab227682)

Formalin-fixed, paraffin-embedded human heart tissue stained for PDK1 using ab227682 at 1/100 dilution in immunohistochemical analysis.



Immunohistochemistry (Formalin/PFA-fixed paraffin-embedded sections) - Anti-PDK1 antibody [SP270] - C-terminal (ab227682)





Formalin-fixed, paraffin-embedded human pancreas tissue stained for PDK1 using ab227682 at 1/100 dilution in immunohistochemical analysis.



Immunohistochemistry (Formalin/PFA-fixed paraffin-embedded sections) - Anti-PDK1 antibody [SP270] - C-terminal (ab227682)

Formalin-fixed, paraffin-embedded human testis tissue stained for PDK1 using ab227682 at 1/100 dilution in immunohistochemical analysis.

Why choose a recombinant antibody?

 <p><b>Research with confidence</b> Consistent and reproducible results</p>	 <p><b>Long-term and scalable supply</b> Recombinant technology</p>
 <p><b>Success from the first experiment</b> Confirmed specificity</p>	 <p><b>Ethical standards compliant</b> Animal-free production</p>

Anti-PDK1 antibody [SP270] - C-terminal (ab227682)

**Please note:** All products are "FOR RESEARCH USE ONLY. NOT FOR USE IN DIAGNOSTIC PROCEDURES"

### Our Abpromise to you: Quality guaranteed and expert technical support

---

- Replacement or refund for products not performing as stated on the datasheet
- Valid for 12 months from date of delivery
- Response to your inquiry within 24 hours
- We provide support in Chinese, English, French, German, Japanese and Spanish
- Extensive multi-media technical resources to help you
- We investigate all quality concerns to ensure our products perform to the highest standards

If the product does not perform as described on this datasheet, we will offer a refund or replacement. For full details of the Abpromise, please visit <https://www.abcam.com/abpromise> or contact our technical team.

### Terms and conditions

---

- Guarantee only valid for products bought direct from Abcam or one of our authorized distributors