

PE Anti-CD14 antibody [47-3D6] ab91143

[2 Images](#)

Overview

Product name	PE Anti-CD14 antibody [47-3D6]
Description	PE Mouse monoclonal [47-3D6] to CD14
Host species	Mouse
Conjugation	PE. Ex: 488nm, Em: 575nm
Specificity	ab91143 reacts with Human monocytes and macrophages; weak reactions may occur with neutrophils.
Tested applications	Suitable for: Flow Cyt
Species reactivity	Reacts with: Human
Immunogen	Human lung angiotensin converting enzyme.
Positive control	Human normal peripheral blood
General notes	<p>The Life Science industry has been in the grips of a reproducibility crisis for a number of years. Abcam is leading the way in addressing this with our range of recombinant monoclonal antibodies and knockout edited cell lines for gold-standard validation. Please check that this product meets your needs before purchasing.</p> <p>If you have any questions, special requirements or concerns, please send us an inquiry and/or contact our Support team ahead of purchase. Recommended alternatives for this product can be found below, along with publications, customer reviews and Q&As</p>

Properties

Form	Liquid
Storage instructions	Shipped at 4°C. Store at +4°C.
Storage buffer	pH: 7.20 Preservative: 0.09% Sodium azide Constituent: 1% BSA
Purity	Immunogen affinity purified
Clonality	Monoclonal
Clone number	47-3D6
Isotype	IgG1

Applications

The Abpromise guarantee

Our **Abpromise guarantee** covers the use of ab91143 in the following tested applications.

The application notes include recommended starting dilutions; optimal dilutions/concentrations should be determined by the end user.

Application	Abreviews	Notes
Flow Cyt		Use 20µl for 10 ⁶ cells. ab91357 - Mouse monoclonal IgG1, is suitable for use as an isotype control with this antibody.

Target

Function

Cooperates with MD-2 and TLR4 to mediate the innate immune response to bacterial lipopolysaccharide (LPS). Acts via MyD88, TIRAP and TRAF6, leading to NF-kappa-B activation, cytokine secretion and the inflammatory response. Up-regulates cell surface molecules, including adhesion molecules.

Tissue specificity

Expressed strongly on the surface of monocytes and weakly on the surface of granulocytes; also expressed by most tissue macrophages.

Sequence similarities

Contains 11 LRR (leucine-rich) repeats.

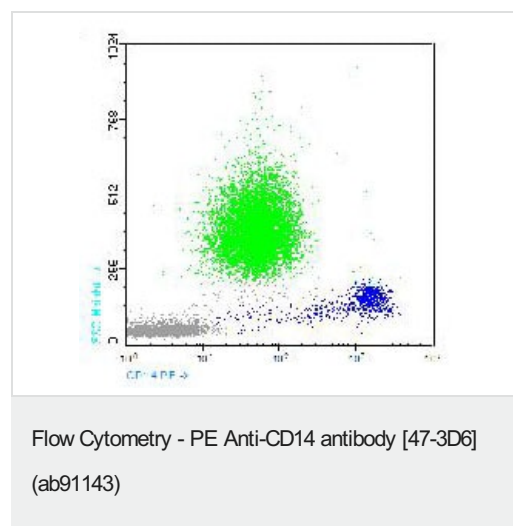
Post-translational modifications

N- and O- glycosylated. O-glycosylated with a core 1 or possibly core 8 glycan.

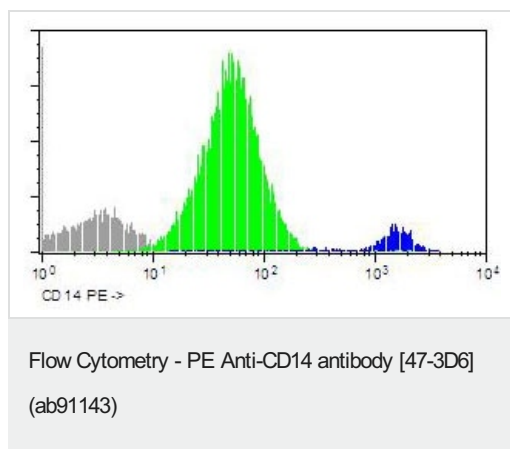
Cellular localization

Cell membrane.

Images



ab91143, at 20µl/10⁶ cells, staining CD14 in Human normal peripheral blood by Flow Cytometry.



ab91143, at 20 μ l/10⁶ cells, staining CD14 in Human normal peripheral blood by Flow Cytometry.

Please note: All products are "FOR RESEARCH USE ONLY. NOT FOR USE IN DIAGNOSTIC PROCEDURES"

Our Abpromise to you: Quality guaranteed and expert technical support

- Replacement or refund for products not performing as stated on the datasheet
- Valid for 12 months from date of delivery
- Response to your inquiry within 24 hours
- We provide support in Chinese, English, French, German, Japanese and Spanish
- Extensive multi-media technical resources to help you
- We investigate all quality concerns to ensure our products perform to the highest standards

If the product does not perform as described on this datasheet, we will offer a refund or replacement. For full details of the Abpromise, please visit <https://www.abcam.com/abpromise> or contact our technical team.

Terms and conditions

- Guarantee only valid for products bought direct from Abcam or one of our authorized distributors