

PE Anti-CD1d antibody [1B1] ab93508

[3 References](#) [1 Image](#)

Overview

Product name	PE Anti-CD1d antibody [1B1]
Description	PE Rat monoclonal [1B1] to CD1d
Host species	Rat
Conjugation	PE. Ex: 488nm, Em: 575nm
Specificity	Also detects beta2-m associated CD1d.
Tested applications	Suitable for: Flow Cyt
Species reactivity	Reacts with: Mouse
Immunogen	Tissue, cells or virus corresponding to Mouse CD1d. Mouse CD1d cDNA-transfected RMA-S Mouse T lymphoma
Positive control	Mouse splenocyte suspensions and Mouse leukocyte cells
General notes	<p>The Life Science industry has been in the grips of a reproducibility crisis for a number of years. Abcam is leading the way in addressing this with our range of recombinant monoclonal antibodies and knockout edited cell lines for gold-standard validation. Please check that this product meets your needs before purchasing.</p> <p>If you have any questions, special requirements or concerns, please send us an inquiry and/or contact our Support team ahead of purchase. Recommended alternatives for this product can be found below, along with publications, customer reviews and Q&As</p>

Properties

Form	Liquid
Storage instructions	Shipped at 4°C. Store at +4°C.
Storage buffer	pH: 7.20 Preservative: 0.09% Sodium azide Constituents: 0.87% Sodium chloride, PBS
Purity	Protein G purified
Clonality	Monoclonal
Clone number	1B1
Isotype	IgG2b
Light chain type	kappa

Applications

The Abpromise guarantee

Our **Abpromise guarantee** covers the use of ab93508 in the following tested applications.

The application notes include recommended starting dilutions; optimal dilutions/concentrations should be determined by the end user.

Application	Abreviews	Notes
Flow Cyt		

Application notes

Flow Cyt: Use 0.125µg for 10⁵ to 10⁸ cells in 100µl

Not yet tested in other applications.

Optimal dilutions/concentrations should be determined by the end user.

Target

Function

Antigen-presenting protein that binds self and non-self glycolipids and presents them to T-cell receptors on natural killer T-cells.

Tissue specificity

Expressed on cortical thymocytes, on certain T-cell leukemias, and in various other tissues.

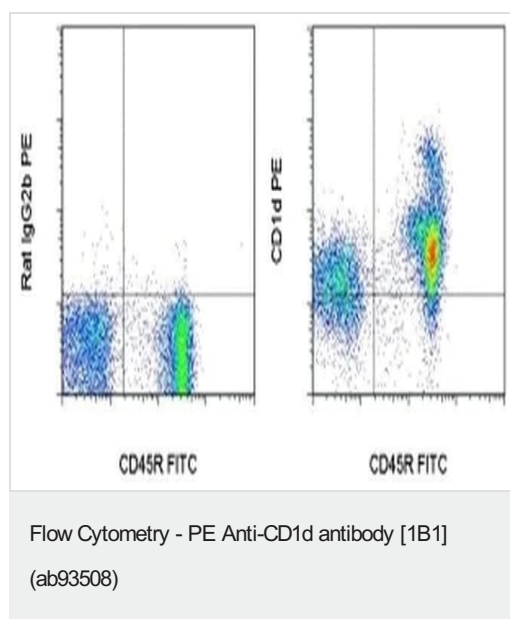
Sequence similarities

Contains 1 Ig-like (immunoglobulin-like) domain.

Cellular localization

Cell membrane. Endosome membrane. Lysosome membrane. Subject to intracellular trafficking between the cell membrane, endosomes and lysosomes.

Images



Flow cytometric analysis staining C57Bl/6 mouse splenocytes with Anti-Human/Mouse CD45R FITC and 0.06 µg of Rat IgG2b K Isotype Control PE (left) or 0.06 µg of ab93508 (right). Cells in the lymphocyte gate were used for analysis.

Please note: All products are "FOR RESEARCH USE ONLY. NOT FOR USE IN DIAGNOSTIC PROCEDURES"

Our Abpromise to you: Quality guaranteed and expert technical support

- Replacement or refund for products not performing as stated on the datasheet
- Valid for 12 months from date of delivery
- Response to your inquiry within 24 hours

- We provide support in Chinese, English, French, German, Japanese and Spanish
- Extensive multi-media technical resources to help you
- We investigate all quality concerns to ensure our products perform to the highest standards

If the product does not perform as described on this datasheet, we will offer a refund or replacement. For full details of the Abpromise, please visit <https://www.abcam.com/abpromise> or contact our technical team.

Terms and conditions

- Guarantee only valid for products bought direct from Abcam or one of our authorized distributors