

## Product datasheet

### PE Anti-CD40 antibody [1C10] ab25270

[1 Image](#)

#### Overview

---

<b>Product name</b>	PE Anti-CD40 antibody [1C10]
<b>Description</b>	PE Rat monoclonal [1C10] to CD40
<b>Host species</b>	Rat
<b>Conjugation</b>	PE. Ex: 488nm, Em: 575nm
<b>Tested applications</b>	<b>Suitable for:</b> Flow Cyt
<b>Species reactivity</b>	<b>Reacts with:</b> Mouse
<b>Immunogen</b>	Recombinant fragment corresponding to CD40. sCD40
<b>General notes</b>	<p>The Life Science industry has been in the grips of a reproducibility crisis for a number of years. Abcam is leading the way in addressing this with our range of recombinant monoclonal antibodies and knockout edited cell lines for gold-standard validation. Please check that this product meets your needs before purchasing.</p> <p>If you have any questions, special requirements or concerns, please send us an inquiry and/or contact our Support team ahead of purchase. Recommended alternatives for this product can be found below, along with publications, customer reviews and Q&amp;As</p>

#### Properties

---

<b>Form</b>	Liquid
<b>Storage instructions</b>	Shipped at 4°C. Store at +4°C. Store In the Dark.
<b>Storage buffer</b>	pH: 7.3 Preservative: 0.09% Sodium azide Constituents: PBS, Sucrose  Stabilising agent.
<b>Purity</b>	Affinity purified
<b>Clonality</b>	Monoclonal
<b>Clone number</b>	1C10
<b>Isotype</b>	IgG2a
<b>Light chain type</b>	kappa

## Applications

### The Abpromise guarantee

Our **Abpromise guarantee** covers the use of ab25270 in the following tested applications.

The application notes include recommended starting dilutions; optimal dilutions/concentrations should be determined by the end user.

Application	Abreviews	Notes
Flow Cyt		Use at an assay dependent concentration. <b>ab134674</b> - Rat monoclonal IgG2a, is suitable for use as an isotype control with this antibody.

## Target

### Function

Receptor for TNFSF5/CD40LG.

### Tissue specificity

B-cells and in primary carcinomas.

### Involvement in disease

Defects in CD40 are the cause of hyper-IgM immunodeficiency syndrome type 3 (HIGM3) [MIM:606843]; also known as hyper-IgM syndrome 3. HIGM3 is an autosomal recessive disorder which includes an inability of B cells to undergo isotype switching, one of the final differentiation steps in the humoral immune system, an inability to mount an antibody-specific immune response, and a lack of germinal center formation.

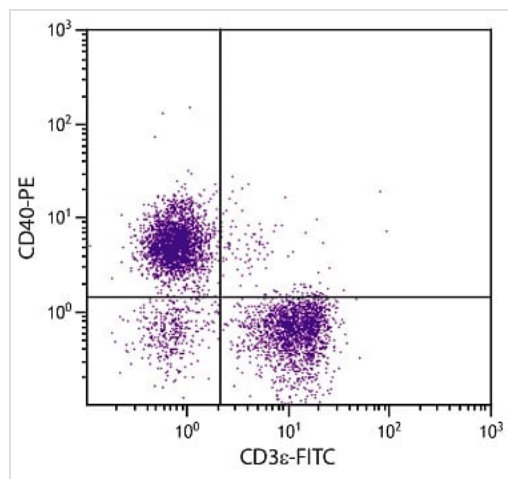
### Sequence similarities

Contains 4 TNFR-Cys repeats.

### Cellular localization

Secreted and Cell membrane.

## Images



Flow Cytometry - PE Anti-CD40 antibody [1C10]  
(ab25270)

Flow Cytometry analysis of BALB/c mouse splenocytes stained with Anti-CD40 antibody [1C10] (Phycoerythrin) (ab25270) (0.1 µg/10<sup>6</sup> cells) and Anti-CD3 antibody [C363.29B] (FITC) (**ab24948**).

**Please note:** All products are "FOR RESEARCH USE ONLY. NOT FOR USE IN DIAGNOSTIC PROCEDURES"

**Our Abpromise to you: Quality guaranteed and expert technical support**

- Replacement or refund for products not performing as stated on the datasheet
- Valid for 12 months from date of delivery
- Response to your inquiry within 24 hours
  
- We provide support in Chinese, English, French, German, Japanese and Spanish
- Extensive multi-media technical resources to help you
- We investigate all quality concerns to ensure our products perform to the highest standards

If the product does not perform as described on this datasheet, we will offer a refund or replacement. For full details of the Abpromise, please visit <https://www.abcam.com/abpromise> or contact our technical team.

### **Terms and conditions**

---

- Guarantee only valid for products bought direct from Abcam or one of our authorized distributors