

### PE Anti-GCSF Receptor antibody [LMM741] ab233582

1 Image

#### Overview

---

<b>Product name</b>	PE Anti-GCSF Receptor antibody [LMM741]
<b>Description</b>	PE Mouse monoclonal [LMM741] to GCSF Receptor
<b>Host species</b>	Mouse
<b>Conjugation</b>	PE. Ex: 488nm, Em: 575nm
<b>Tested applications</b>	<b>Suitable for:</b> Flow Cyt
<b>Species reactivity</b>	<b>Reacts with:</b> Human
<b>Immunogen</b>	Tissue, cells or virus corresponding to GCSF Receptor. CHO cells transfected with human GCSF Receptor. Database link: <a href="#">Q99062</a>
<b>Positive control</b>	Flow Cytometry: Human peripheral blood cells.
<b>General notes</b>	<p>The Life Science industry has been in the grips of a reproducibility crisis for a number of years. Abcam is leading the way in addressing this with our range of recombinant monoclonal antibodies and knockout edited cell lines for gold-standard validation. Please check that this product meets your needs before purchasing.</p> <p>If you have any questions, special requirements or concerns, please send us an inquiry and/or contact our Support team ahead of purchase. Recommended alternatives for this product can be found below, along with publications, customer reviews and Q&amp;As</p>

#### Properties

---

<b>Form</b>	Liquid
<b>Storage instructions</b>	Shipped at 4°C. Store at +4°C. Store In the Dark.
<b>Storage buffer</b>	pH: 7.4 Preservative: 0.0975% Sodium azide Constituent: PBS
<b>Purity</b>	Size exclusion
<b>Purification notes</b>	The purified antibody is conjugated with R-Phycoerythrin (PE) under optimum conditions. The conjugate is purified by size-exclusion chromatography and adjusted for direct use. No reconstitution is necessary.
<b>Clonality</b>	Monoclonal

**Clone number** LMM741  
**Isotype** IgG1

## Applications

**The Abpromise guarantee** Our **Abpromise guarantee** covers the use of ab233582 in the following tested applications. The application notes include recommended starting dilutions; optimal dilutions/concentrations should be determined by the end user.

Application	Abreviews	Notes
Flow Cyt		Use 10µl for 10 <sup>6</sup> cells. (or 100 µL whole blood)

## Target

**Function** Receptor for granulocyte colony-stimulating factor (CSF3), essential for granulocytic maturation. Plays a crucial role in the proliferation, differentiation and survival of cells along the neutrophilic lineage. In addition it may function in some adhesion or recognition events at the cell surface.

**Tissue specificity** One or several isoforms have been found in myelogenous leukemia cell line KG-1, leukemia U-937 cell line, in bone marrow cells, placenta, and peripheral blood granulocytes. Isoform GCSFR-2 is found only in leukemia U-937 cells. Isoform GCSFR-3 is highly expressed in placenta.

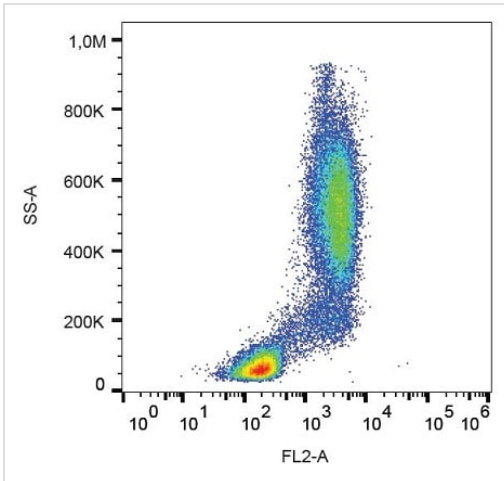
**Involvement in disease** Hereditary neutrophilia

**Sequence similarities** Belongs to the type I cytokine receptor family. Type 2 subfamily.  
Contains 5 fibronectin type-III domains.  
Contains 1 Ig-like C2-type (immunoglobulin-like) domain.

**Domain** The WSXWS motif appears to be necessary for proper protein folding and thereby efficient intracellular transport and cell-surface receptor binding.  
The box 1 motif is required for JAK interaction and/or activation.

**Cellular localization** Secreted and Cell membrane.

## Images



Flow cytometric surface staining of GCSF Receptor in human peripheral blood cells with ab233582. Leukocyte gate.

Flow Cytometry - PE Anti-GCSF Receptor antibody  
[LMM741] (ab233582)

**Please note:** All products are "FOR RESEARCH USE ONLY. NOT FOR USE IN DIAGNOSTIC PROCEDURES"

### Our Abpromise to you: Quality guaranteed and expert technical support

- Replacement or refund for products not performing as stated on the datasheet
- Valid for 12 months from date of delivery
- Response to your inquiry within 24 hours
- We provide support in Chinese, English, French, German, Japanese and Spanish
- Extensive multi-media technical resources to help you
- We investigate all quality concerns to ensure our products perform to the highest standards

If the product does not perform as described on this datasheet, we will offer a refund or replacement. For full details of the Abpromise, please visit <https://www.abcam.com/abpromise> or contact our technical team.

### Terms and conditions

- Guarantee only valid for products bought direct from Abcam or one of our authorized distributors