

## Product datasheet

### PE Anti-NCAM1 antibody [LT56] ab191100

[1 References](#) [1 Image](#)

#### Overview

<b>Product name</b>	PE Anti-NCAM1 antibody [LT56]
<b>Description</b>	PE Mouse monoclonal [LT56] to NCAM1
<b>Host species</b>	Mouse
<b>Conjugation</b>	PE. Ex: 488nm, Em: 575nm
<b>Tested applications</b>	<b>Suitable for:</b> Flow Cyt
<b>Species reactivity</b>	<b>Reacts with:</b> Human
<b>Immunogen</b>	Tissue, cells or virus corresponding to Human NCAM. Cell line KG1a.
<b>Positive control</b>	Human blood cells.
<b>General notes</b>	<p>The Life Science industry has been in the grips of a reproducibility crisis for a number of years. Abcam is leading the way in addressing this with our range of recombinant monoclonal antibodies and knockout edited cell lines for gold-standard validation. Please check that this product meets your needs before purchasing.</p> <p>If you have any questions, special requirements or concerns, please send us an inquiry and/or contact our Support team ahead of purchase. Recommended alternatives for this product can be found below, along with publications, customer reviews and Q&amp;As</p>

#### Properties

<b>Form</b>	Liquid
<b>Storage instructions</b>	Shipped at 4°C. Store at +4°C. Store In the Dark.
<b>Storage buffer</b>	<p>pH: 7.4</p> <p>Preservative: 0.097% Sodium azide</p> <p>Constituents: 99% PBS, 0.2% BSA</p> <p>BSA is high-grade protease free.</p>
<b>Purity</b>	Size exclusion
<b>Clonality</b>	Monoclonal
<b>Clone number</b>	LT56
<b>Isotype</b>	IgG2a

## Applications

### The Abpromise guarantee

Our **Abpromise guarantee** covers the use of ab191100 in the following tested applications.

The application notes include recommended starting dilutions; optimal dilutions/concentrations should be determined by the end user.

Application	Abreviews	Notes
Flow Cyt		Use 10µl for 10 <sup>6</sup> cells.

## Target

### Function

This protein is a cell adhesion molecule involved in neuron-neuron adhesion, neurite fasciculation, outgrowth of neurites, etc.

### Sequence similarities

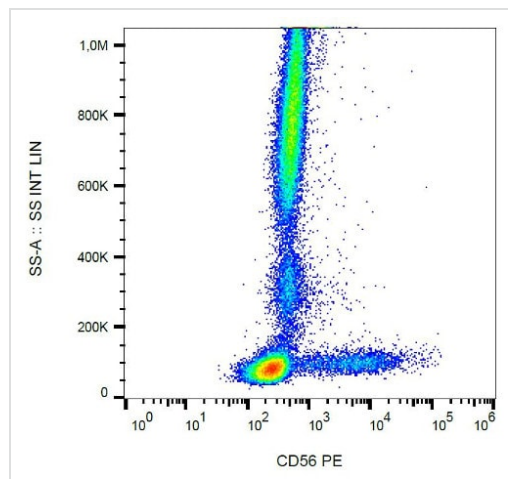
Contains 2 fibronectin type-III domains.

Contains 5 Ig-like C2-type (immunoglobulin-like) domains.

### Cellular localization

Secreted and Cell membrane.

## Images



Flow Cytometry analysis of human peripheral blood cells labeling NCAM with Anti-NCAM antibody [LT56] (Phycoerythrin) (ab191100).

Flow Cytometry - PE Anti-NCAM1 antibody [LT56]  
(ab191100)

**Please note:** All products are "FOR RESEARCH USE ONLY. NOT FOR USE IN DIAGNOSTIC PROCEDURES"

## Our Abpromise to you: Quality guaranteed and expert technical support

- Replacement or refund for products not performing as stated on the datasheet
- Valid for 12 months from date of delivery
- Response to your inquiry within 24 hours
- We provide support in Chinese, English, French, German, Japanese and Spanish
- Extensive multi-media technical resources to help you

- We investigate all quality concerns to ensure our products perform to the highest standards

If the product does not perform as described on this datasheet, we will offer a refund or replacement. For full details of the Abpromise, please visit <https://www.abcam.com/abpromise> or contact our technical team.

#### **Terms and conditions**

---

- Guarantee only valid for products bought direct from Abcam or one of our authorized distributors