




Product datasheet

PE Anti-OPA1L antibody [OPAL1-01] ab191109

1 Image

Overview

Product name	PE Anti-OPA1L antibody [OPAL1-01]
Description	PE Mouse monoclonal [OPAL1-01] to OPAL1
Host species	Mouse
Conjugation	PE. Ex: 488nm, Em: 575nm
Tested applications	Suitable for: Flow Cyt (Intra)
Species reactivity	Reacts with: Human Predicted to work with: Rat 
Immunogen	Recombinant fragment corresponding to Human OPA1L aa 150 to the C-terminus. Database link: Q9NX94  Run BLAST with  Run BLAST with
Positive control	Flow Cyt: Human peripheral blood cells.
General notes	<p>The Life Science industry has been in the grips of a reproducibility crisis for a number of years. Abcam is leading the way in addressing this with our range of recombinant monoclonal antibodies and knockout edited cell lines for gold-standard validation. Please check that this product meets your needs before purchasing.</p> <p>If you have any questions, special requirements or concerns, please send us an inquiry and/or contact our Support team ahead of purchase. Recommended alternatives for this product can be found below, along with publications, customer reviews and Q&As</p>

Properties

Form	Liquid
Storage instructions	Shipped at 4°C. Store at +4°C. Store In the Dark.
Storage buffer	pH: 7.4 Preservative: 0.097% Sodium azide Constituents: 99% PBS, 0.2% BSA
Purity	Size exclusion
Purification notes	Purified antibody is conjugated with R-Phycoerythrin (PE) under optimum conditions. The conjugate was purified by size-exclusion chromatography.
Clonality	Monoclonal

Clone number OPAL1-01
Isotype IgG2a

Applications

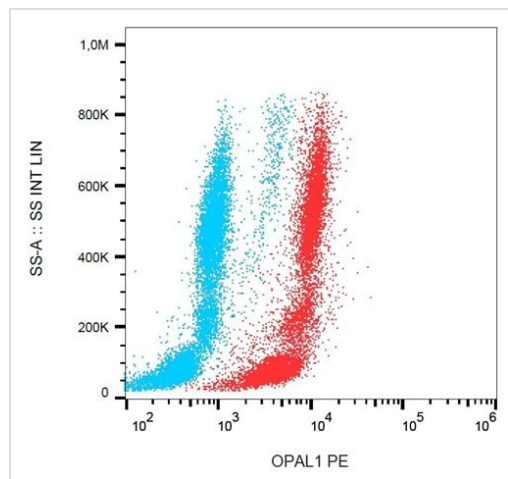
The Abpromise guarantee Our **Abpromise guarantee** covers the use of ab191109 in the following tested applications.
The application notes include recommended starting dilutions; optimal dilutions/concentrations should be determined by the end user.

Application	Abreviews	Notes
Flow Cyt (Intra)		Use a concentration of 1 - 5 µg/ml.

Target

Cellular localization Membrane.

Images



Intracellular flow cytometry analysis of OPAL1 in human peripheral blood cells using 191109 (red). Negative control is shown blue.

Flow Cytometry (Intracellular) - PE Anti-OPAL1
antibody [OPAL1-01] (ab191109)

Please note: All products are "FOR RESEARCH USE ONLY. NOT FOR USE IN DIAGNOSTIC PROCEDURES"

Our Abpromise to you: Quality guaranteed and expert technical support

- Replacement or refund for products not performing as stated on the datasheet
- Valid for 12 months from date of delivery
- Response to your inquiry within 24 hours
- We provide support in Chinese, English, French, German, Japanese and Spanish
- Extensive multi-media technical resources to help you

- We investigate all quality concerns to ensure our products perform to the highest standards

If the product does not perform as described on this datasheet, we will offer a refund or replacement. For full details of the Abpromise, please visit <https://www.abcam.com/abpromise> or contact our technical team.

Terms and conditions

- Guarantee only valid for products bought direct from Abcam or one of our authorized distributors