

Product datasheet

PE Anti-Piccolo antibody [PCLO01] α b176537

1 Image

Overview

Product name	PE Anti-Piccolo antibody [PCLO01]
Description	PE Mouse monoclonal [PCLO01] to Piccolo
Host species	Mouse
Conjugation	PE. Ex: 488nm, Em: 575nm
Tested applications	Suitable for: Flow Cyt (Intra)
Species reactivity	Reacts with: Human
Immunogen	Recombinant full length protein corresponding to Human Piccolo. Database link: Q9Y6V0
General notes	<p>The Life Science industry has been in the grips of a reproducibility crisis for a number of years. Abcam is leading the way in addressing this with our range of recombinant monoclonal antibodies and knockout edited cell lines for gold-standard validation. Please check that this product meets your needs before purchasing.</p> <p>If you have any questions, special requirements or concerns, please send us an inquiry and/or contact our Support team ahead of purchase. Recommended alternatives for this product can be found below, along with publications, customer reviews and Q&As</p>

Properties

Form	Liquid
Storage instructions	Shipped at 4°C. Store at +4°C. Do Not Freeze. Store In the Dark.
Storage buffer	pH: 7.4 Preservative: 0.098% Sodium azide Constituents: 99% PBS, 0.2% BSA
Purity	Size exclusion
Clonality	Monoclonal
Clone number	PCLO01
Isotype	IgG1

Applications

The Abpromise guarantee

Our **Abpromise guarantee** covers the use of ab176537 in the following tested applications.

The application notes include recommended starting dilutions; optimal dilutions/concentrations should be determined by the end user.

Application	Abreviews	Notes
Flow Cyt (Intra)		Use a concentration of 1 - 5 µg/ml.

Target

Function

May act as a scaffolding protein involved in the organization of synaptic active zones and in synaptic vesicle trafficking.

Sequence similarities

Contains 2 C2 domains.
Contains 1 PDZ (DHR) domain.

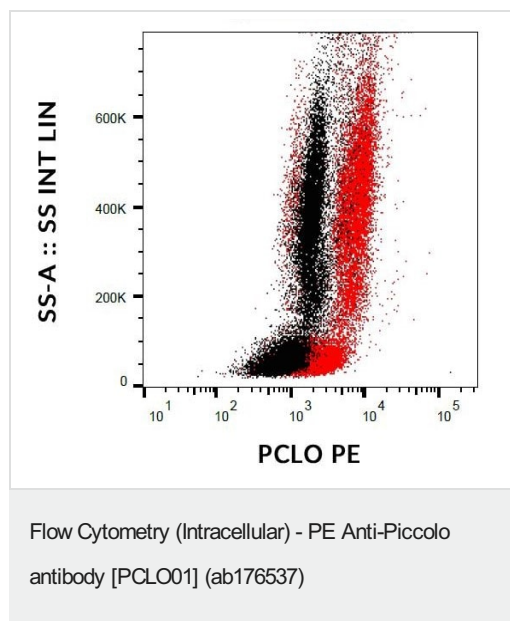
Domain

C2 domain 1 is involved in binding calcium and phospholipids. Calcium binds with low affinity but with high specificity and induces a large conformational change.

Cellular localization

Cell junction > synapse. Concentrated at the presynaptic side of synaptic junctions.

Images



Intracellular flow cytometry analysis of PCLO in human peripheral blood cells using ab176537 (red). Negative control is shown black.

Please note: All products are "FOR RESEARCH USE ONLY. NOT FOR USE IN DIAGNOSTIC PROCEDURES"

Our Abpromise to you: Quality guaranteed and expert technical support

- Replacement or refund for products not performing as stated on the datasheet
- Valid for 12 months from date of delivery
- Response to your inquiry within 24 hours
- We provide support in Chinese, English, French, German, Japanese and Spanish
- Extensive multi-media technical resources to help you

- We investigate all quality concerns to ensure our products perform to the highest standards

If the product does not perform as described on this datasheet, we will offer a refund or replacement. For full details of the Abpromise, please visit <https://www.abcam.com/abpromise> or contact our technical team.

Terms and conditions

- Guarantee only valid for products bought direct from Abcam or one of our authorized distributors