

Product datasheet

PE Anti-Thy1.1 antibody [HIS51] ab95812

1 Image

Overview

Product name	PE Anti-Thy1.1 antibody [HIS51]
Description	PE Mouse monoclonal [HIS51] to Thy1.1
Host species	Mouse
Conjugation	PE. Ex: 488nm, Em: 575nm
Tested applications	Suitable for: Flow Cyt
Species reactivity	Reacts with: Rat
Immunogen	Tissue, cells or virus corresponding to Rat Thy1.1. Rat bone marrow cells Database link: P01830
Positive control	Rat splenocytes
General notes	<p>The Life Science industry has been in the grips of a reproducibility crisis for a number of years. Abcam is leading the way in addressing this with our range of recombinant monoclonal antibodies and knockout edited cell lines for gold-standard validation. Please check that this product meets your needs before purchasing.</p> <p>If you have any questions, special requirements or concerns, please send us an inquiry and/or contact our Support team ahead of purchase. Recommended alternatives for this product can be found below, along with publications, customer reviews and Q&As</p>

Properties

Form	Liquid
Storage instructions	Shipped at 4°C. Store at +4°C.
Storage buffer	pH: 7.20 Preservative: 0.09% Sodium azide Constituents: 0.87% Sodium chloride, PBS
Purity	Protein G purified
Clonality	Monoclonal
Clone number	HIS51
Isotype	IgG2a
Light chain type	kappa

Applications

The Abpromise guarantee

Our **Abpromise guarantee** covers the use of ab95812 in the following tested applications.

The application notes include recommended starting dilutions; optimal dilutions/concentrations should be determined by the end user.

Application	Abreviews	Notes
Flow Cyt		Use 0.06µg for 10 ⁵⁻⁸ cells. ab91363 - Mouse monoclonal IgG2a, is suitable for use as an isotype control with this antibody.

Target

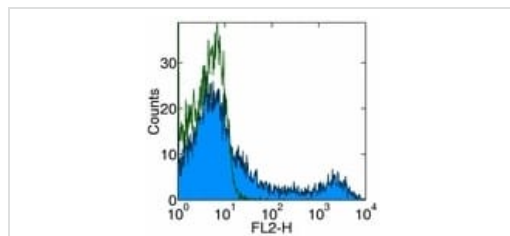
Relevance

CD90 (Thy1) antigen is a GPI linked glycoprotein member of the Immunoglobulin superfamily. It is expressed on murine T cells, thymocytes, neural cells, cells of granulocytic lineage, early hematopoietic progenitors, fibroblasts, neurons and Kupffer's cells. Thy1 may play a role in cell to cell or cell to ligand interactions during synaptogenesis and other events in the brain. It is found in most mouse strains except AKR/J, A, Thy1.1 and B6.PL (74NS) expressing Thy1.1.

Cellular localization

Attached to the membrane by a GPI anchor.

Images



Flow Cytometry - PE Anti-Thy1.1 antibody [HIS51]
(ab95812)

Flow cytometric analysis of rat splenocytes with 0.03 µg of Anti-Mouse/Rat CD90.1 PE (ab95812). Appropriate isotype controls were used (open histogram). Total viable cells were used for analysis.

Please note: All products are "FOR RESEARCH USE ONLY. NOT FOR USE IN DIAGNOSTIC PROCEDURES"

Our Abpromise to you: Quality guaranteed and expert technical support

- Replacement or refund for products not performing as stated on the datasheet
- Valid for 12 months from date of delivery
- Response to your inquiry within 24 hours
- We provide support in Chinese, English, French, German, Japanese and Spanish
- Extensive multi-media technical resources to help you
- We investigate all quality concerns to ensure our products perform to the highest standards

If the product does not perform as described on this datasheet, we will offer a refund or replacement. For full details of the Abpromise, please visit <https://www.abcam.com/abpromise> or contact our technical team.

Terms and conditions

- Guarantee only valid for products bought direct from Abcam or one of our authorized distributors