



Product datasheet

Anti-PEAMT antibody ab172388

[1 References](#) [1 Image](#)

Overview

| | |
|----------------------------|---|
| Product name | Anti-PEAMT antibody |
| Description | Rabbit polyclonal to PEAMT |
| Host species | Rabbit |
| Tested applications | Suitable for: WB |
| Species reactivity | Reacts with: Human |
| Immunogen | Recombinant full length protein within Human PEAMT aa 1 to the C-terminus. The exact immunogen sequence used to generate this antibody is proprietary information. If additional detail on the immunogen is needed to determine the suitability of the antibody for your needs, please contact our Scientific Support team to discuss your requirements. Isoform 2 Database link: Q9UBM1-2  Run BLAST with  Run BLAST with |
| Positive control | PEAMT transfected 293T cell line lysate. |
| General notes | <p>The Life Science industry has been in the grips of a reproducibility crisis for a number of years. Abcam is leading the way in addressing this with our range of recombinant monoclonal antibodies and knockout edited cell lines for gold-standard validation. Please check that this product meets your needs before purchasing.</p> <p>If you have any questions, special requirements or concerns, please send us an inquiry and/or contact our Support team ahead of purchase. Recommended alternatives for this product can be found below, along with publications, customer reviews and Q&As</p> |

Properties

| | |
|-----------------------------|---|
| Form | Liquid |
| Storage instructions | Shipped at 4°C. Store at +4°C short term (1-2 weeks). Upon delivery aliquot. Store at -20°C long term. Avoid freeze / thaw cycle. |
| Storage buffer | pH: 7.4 Constituent: 100% PBS |
| Purity | Protein A purified |
| Clonality | Polyclonal |
| Isotype | IgG |

Applications

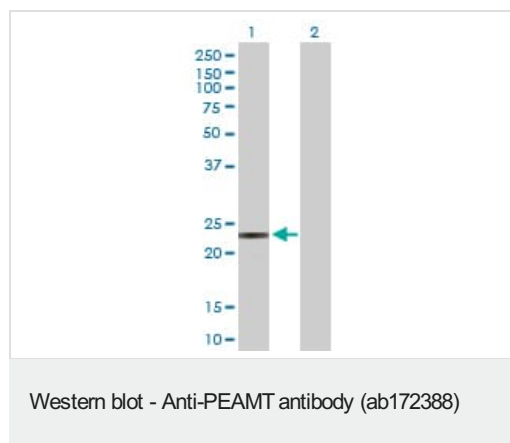
The Abpromise guarantee Our **Abpromise guarantee** covers the use of ab172388 in the following tested applications. The application notes include recommended starting dilutions; optimal dilutions/concentrations should be determined by the end user.

| Application | Abreviews | Notes |
|-------------|-----------|---|
| WB | | Use a concentration of 1 µg/ml. Predicted molecular weight: 26 kDa. |

Target

| | |
|------------------------------|---|
| Function | Catalyzes three sequential methylation of phosphatidylethanolamine (PE) by AdoMet, thus producing phosphatidylcholine (PC). |
| Sequence similarities | Belongs to the PEMT/PEM2 methyltransferase family. |
| Cellular localization | Endoplasmic reticulum membrane. Mitochondrion membrane. Found in endoplasmic reticulum where most PEMT activity is generated and in mitochondria. |

Images



All lanes : Anti-PEAMT antibody (ab172388) at 1 µg/ml

Lane 1 : PEAMT transfected 293T cell line lysate

Lane 2 : Non-transfected 293T cell line lysate

Secondary

All lanes : Goat Anti-Rabbit IgG (H+L), Peroxidase Conjugated at 1/7500 dilution

Predicted band size: 26 kDa

Please note: All products are "FOR RESEARCH USE ONLY. NOT FOR USE IN DIAGNOSTIC PROCEDURES"

Our Abpromise to you: Quality guaranteed and expert technical support

- Replacement or refund for products not performing as stated on the datasheet
- Valid for 12 months from date of delivery
- Response to your inquiry within 24 hours
- We provide support in Chinese, English, French, German, Japanese and Spanish
- Extensive multi-media technical resources to help you
- We investigate all quality concerns to ensure our products perform to the highest standards

If the product does not perform as described on this datasheet, we will offer a refund or replacement. For full details of the Abpromise, please visit <https://www.abcam.com/abpromise> or contact our technical team.

Terms and conditions

- Guarantee only valid for products bought direct from Abcam or one of our authorized distributors