

## Product datasheet

### PE/Cy5® Anti-CD10 antibody [CB-CALLA] ab95543

[1 Image](#)

#### Overview

<b>Product name</b>	PE/Cy5® Anti-CD10 antibody [CB-CALLA]
<b>Description</b>	PE/Cy5® Mouse monoclonal [CB-CALLA] to CD10
<b>Host species</b>	Mouse
<b>Conjugation</b>	PE/Cy5®. Ex: 496nm, Em: 670nm
<b>Tested applications</b>	<b>Suitable for:</b> Flow Cyt
<b>Species reactivity</b>	<b>Reacts with:</b> Human
<b>Immunogen</b>	Full length protein corresponding to Human CD10. native protein Database link: <a href="#">P08473</a>
<b>Epitope</b>	There is partial blocking of the CB-CALLA and MEM-78 monoclonal antibodies, indicating that they recognize similar epitopes.
<b>Positive control</b>	Human peripheral blood cells
<b>General notes</b>	<p>The Life Science industry has been in the grips of a reproducibility crisis for a number of years. Abcam is leading the way in addressing this with our range of recombinant monoclonal antibodies and knockout edited cell lines for gold-standard validation. Please check that this product meets your needs before purchasing.</p> <p>If you have any questions, special requirements or concerns, please send us an inquiry and/or contact our Support team ahead of purchase. Recommended alternatives for this product can be found below, along with publications, customer reviews and Q&amp;As</p>

#### Properties

<b>Form</b>	Liquid
<b>Storage instructions</b>	Shipped at 4°C. Store at +4°C.
<b>Storage buffer</b>	pH: 7.20 Preservative: 0.09% Sodium azide Constituents: BSA, Gelatin, PBS
<b>Purity</b>	Protein G purified
<b>Clonality</b>	Monoclonal
<b>Clone number</b>	CB-CALLA
<b>Isotype</b>	IgG2b

## Applications

### The Abpromise guarantee

Our **Abpromise guarantee** covers the use of ab95543 in the following tested applications.

The application notes include recommended starting dilutions; optimal dilutions/concentrations should be determined by the end user.

Application	Abreviews	Notes
Flow Cyt		Use 5µl for 10 <sup>6</sup> cells. <b>ab91535</b> - Mouse monoclonal IgG2b, is suitable for use as an isotype control with this antibody.

## Target

### Function

Thermolysin-like specificity, but is almost confined on acting on polypeptides of up to 30 amino acids. Biologically important in the destruction of opioid peptides such as Met- and Leu-enkephalins by cleavage of a Gly-Phe bond. Able to cleave angiotensin-1, angiotensin-2 and angiotensin 1-9. Involved in the degradation of atrial natriuretic factor (ANF). Displays UV-inducible elastase activity toward skin preelastic and elastic fibers.

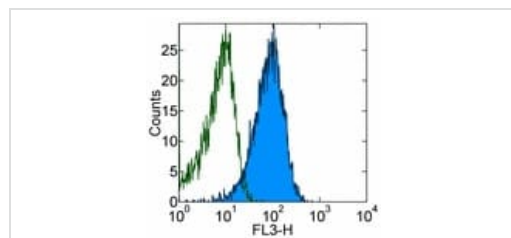
### Sequence similarities

Belongs to the peptidase M13 family.

### Cellular localization

Cell membrane.

## Images



Flow Cytometry - PE/Cy5® Anti-CD10 antibody [CB-CALLA] (ab95543)

Staining of normal Human peripheral blood cells with staining buffer (autofluorescence) (open histogram), or ab95543 (colored histogram). Cells in the granulocyte gate were used for analysis.

**Please note:** All products are "FOR RESEARCH USE ONLY. NOT FOR USE IN DIAGNOSTIC PROCEDURES"

## Our Abpromise to you: Quality guaranteed and expert technical support

- Replacement or refund for products not performing as stated on the datasheet
- Valid for 12 months from date of delivery
- Response to your inquiry within 24 hours
- We provide support in Chinese, English, French, German, Japanese and Spanish

- Extensive multi-media technical resources to help you
- We investigate all quality concerns to ensure our products perform to the highest standards

If the product does not perform as described on this datasheet, we will offer a refund or replacement. For full details of the Abpromise, please visit <https://www.abcam.com/abpromise> or contact our technical team.

#### **Terms and conditions**

---

- Guarantee only valid for products bought direct from Abcam or one of our authorized distributors