

## Product datasheet

### PE/Cy5® Anti-CD2 antibody [RPA-2.10] ab95556

[2 References](#) [1 Image](#)

#### Overview

<b>Product name</b>	PE/Cy5® Anti-CD2 antibody [RPA-2.10]
<b>Description</b>	PE/Cy5® Mouse monoclonal [RPA-2.10] to CD2
<b>Host species</b>	Mouse
<b>Conjugation</b>	PE/Cy5®. Ex: 496nm, Em: 670nm
<b>Specificity</b>	RPA-2.10 blocks mixed lymphocyte reaction.
<b>Tested applications</b>	<b>Suitable for:</b> Flow Cyt
<b>Species reactivity</b>	<b>Reacts with:</b> Human
<b>Immunogen</b>	Recombinant full length protein corresponding to Human CD2.
<b>Positive control</b>	Normal human peripheral blood cells/leukocytes
<b>General notes</b>	<p>The Life Science industry has been in the grips of a reproducibility crisis for a number of years. Abcam is leading the way in addressing this with our range of recombinant monoclonal antibodies and knockout edited cell lines for gold-standard validation. Please check that this product meets your needs before purchasing.</p> <p>If you have any questions, special requirements or concerns, please send us an inquiry and/or contact our Support team ahead of purchase. Recommended alternatives for this product can be found below, along with publications, customer reviews and Q&amp;As</p>

#### Properties

<b>Form</b>	Liquid
<b>Storage instructions</b>	Shipped at 4°C. Store at +4°C.
<b>Storage buffer</b>	pH: 7.20 Preservative: 0.09% Sodium azide
<b>Purity</b>	Protein G purified
<b>Clonality</b>	Monoclonal
<b>Clone number</b>	RPA-2.10
<b>Isotype</b>	IgG1
<b>Light chain type</b>	kappa

## Applications

### The Abpromise guarantee

Our **Abpromise guarantee** covers the use of ab95556 in the following tested applications.

The application notes include recommended starting dilutions; optimal dilutions/concentrations should be determined by the end user.

Application	Abreviews	Notes
Flow Cyt		Use 5µl for 10 <sup>6</sup> cells. <b>ab67435</b> - Mouse monoclonal IgG1, is suitable for use as an isotype control with this antibody.

## Target

### Function

CD2 interacts with lymphocyte function-associated antigen (LFA-3) and CD48/BCM1 to mediate adhesion between T-cells and other cell types. CD2 is implicated in the triggering of T-cells, the cytoplasmic domain is implicated in the signaling function.

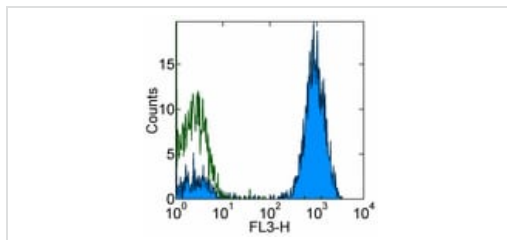
### Sequence similarities

Contains 1 Ig-like C2-type (immunoglobulin-like) domain.  
Contains 1 Ig-like V-type (immunoglobulin-like) domain.

### Cellular localization

Membrane.

## Images



Flow Cytometry - PE/Cy5® Anti-CD2 antibody  
[RPA-2.10] (ab95556)

Flow cytometry staining of normal human peripheral blood cells with Mouse IgG1 ? Isotype Control PE-Cy5 (open histogram) or ab95556 (filled histogram). Total cells were used for analysis.

**Please note:** All products are "FOR RESEARCH USE ONLY. NOT FOR USE IN DIAGNOSTIC PROCEDURES"

## Our Abpromise to you: Quality guaranteed and expert technical support

- Replacement or refund for products not performing as stated on the datasheet
- Valid for 12 months from date of delivery
- Response to your inquiry within 24 hours
- We provide support in Chinese, English, French, German, Japanese and Spanish
- Extensive multi-media technical resources to help you
- We investigate all quality concerns to ensure our products perform to the highest standards

If the product does not perform as described on this datasheet, we will offer a refund or replacement. For full details of the Abpromise, please visit <https://www.abcam.com/abpromise> or contact our technical team.

## Terms and conditions

---

- Guarantee only valid for products bought direct from Abcam or one of our authorized distributors