

Product datasheet

PE/Cy5® Anti-CD3 antibody [UCHT1], prediluted ab157300

[5 References](#) [1 Image](#)

Overview

Product name	PE/Cy5® Anti-CD3 antibody [UCHT1], prediluted
Description	PE/Cy5® Mouse monoclonal [UCHT1] to CD3, prediluted
Host species	Mouse
Conjugation	PE/Cy5®. Ex: 496nm, Em: 670nm
Tested applications	Suitable for: Flow Cyt (Intra), Flow Cyt
Species reactivity	Reacts with: Rat, Human
Immunogen	Tissue, cells or virus corresponding to Human CD3. Human thymocytes followed by Sezary T cells.
Epitope	ab157300 reacts with the epsilon chain of the CD3 complex.
Positive control	Flow Cytometry: human peripheral blood cells. Flow Cyt (Intra): Human blood cells.
General notes	<p>The Life Science industry has been in the grips of a reproducibility crisis for a number of years. Abcam is leading the way in addressing this with our range of recombinant monoclonal antibodies and knockout edited cell lines for gold-standard validation. Please check that this product meets your needs before purchasing.</p> <p>If you have any questions, special requirements or concerns, please send us an inquiry and/or contact our Support team ahead of purchase. Recommended alternatives for this product can be found below, along with publications, customer reviews and Q&As</p>

Properties

Form	Liquid
Storage instructions	Shipped at 4°C. Store at +4°C.
Storage buffer	<p>pH: 7.4</p> <p>Preservative: 0.1% Sodium azide</p> <p>Constituents: 99% PBS, 0.2% BSA</p>
Purity	Size exclusion
Purification notes	Purified antibody is conjugated with tandem dye PE/Cy5® under optimum conditions. The conjugate is purified by size-exclusion chromatography and adjusted for direct use. No reconstitution is necessary.

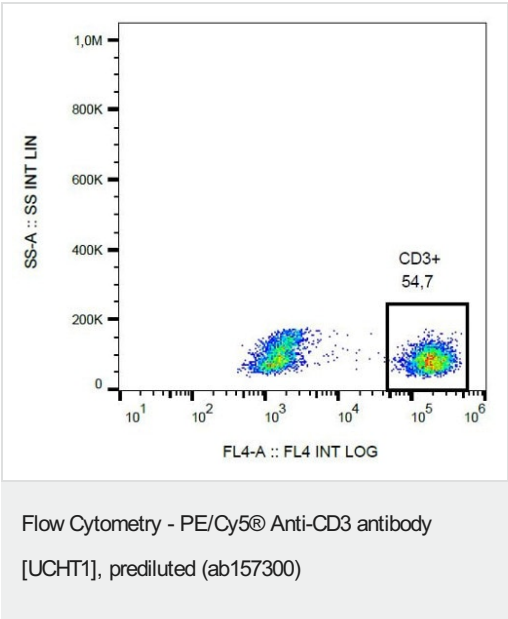
Clonality	Monoclonal
Clone number	UCHT1
Isotype	IgG1

Applications

The **Abpromise guarantee** Our **Abpromise guarantee** covers the use of ab157300 in the following tested applications. The application notes include recommended starting dilutions; optimal dilutions/concentrations should be determined by the end user.

Application	Abreviews	Notes
Flow Cyt (Intra)		<p>Use 4µl for 10⁶ cells. (or 100 µl of whole blood).</p> <p>ab67435 - Mouse monoclonal IgG1, is suitable for use as an isotype control with this antibody.</p>
Flow Cyt		<p>Use 4µl for 10⁶ cells. (or 100 µl of whole blood).</p> <p>ab67435 - Mouse monoclonal IgG1, is suitable for use as an isotype control with this antibody.</p>

Images



Surface staining of human peripheral blood cells with anti-human CD3 (UCHT1) PE-CyTM5.

Please note: All products are "FOR RESEARCH USE ONLY. NOT FOR USE IN DIAGNOSTIC PROCEDURES"

Our Abpromise to you: Quality guaranteed and expert technical support

- Replacement or refund for products not performing as stated on the datasheet
- Valid for 12 months from date of delivery
- Response to your inquiry within 24 hours

- We provide support in Chinese, English, French, German, Japanese and Spanish
- Extensive multi-media technical resources to help you
- We investigate all quality concerns to ensure our products perform to the highest standards

If the product does not perform as described on this datasheet, we will offer a refund or replacement. For full details of the Abpromise, please visit <https://www.abcam.com/abpromise> or contact our technical team.

Terms and conditions

- Guarantee only valid for products bought direct from Abcam or one of our authorized distributors